

# BEYOND THE GRAVES

Volume 9, Number 4, October 2014

## THE REALITY OF WAR



LED BY IWM



Archduke Franz Ferdinand (centre in plumed hat), the heir to the throne of Austria-Hungary, descends the steps of the Town Hall in Sarajevo with his wife Sophie on 28 June 1914. Minutes later, both were shot dead by Gavrilo Princip. Their assassination set in motion the sequence of events that began the First World War.

Peace in Europe was finely balanced. A number of political crises had previously brought Europe to the brink of war but restraint and political caution had always prevented it. At first there was no reason to think that the events in Sarajevo would be any different.

Britain's army was intended to defend the Empire and when the First World War started in August 1914 only a small British Expeditionary Force could be sent to join the French near Mons, Belgium. Modern weapons, particularly quick firing artillery, immediately caused terrible casualties. Tens of thousands of men were killed before the end of the month. Intensive firepower on both sides created stalemate. Both sides dug in. The trenches were to last for nearly four years.

### RYDE REMEMBERS

Approximately 500 who served from the Ryde area made the ultimate sacrifice and lost their lives.

Inspired by the Tower of London artistic installation 'Blood Swept Lands and Seas of Red,' Ryde Social Heritage Group is creating a First World War Garden of Remembrance at Ryde Cemetery.



500 simply designed poppies are being made, each representing a Ryde fatality during the First World War. The poppies will be installed within the South Chapel at Ryde Cemetery during October and November.

Like the Tower of London Moat Project, we hope our garden of red poppies will provide a location for personal reflection and help visualise the actual number of those who died. Our garden is in remembrance of the fallen from a relatively small town and throughout the country every community (city, town and village) has its roll of honour. The extent of human sacrifice is difficult to comprehend.

Source: Imperial War Museum, Isle of Wight Times and Tower of London photo from [www.britishlegion.org.uk](http://www.britishlegion.org.uk)

Editor: Carol Strong – [carol.strong@sky.com](mailto:carol.strong@sky.com)

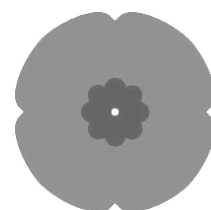
Website: [www.rshg.org.uk](http://www.rshg.org.uk)

© Ryde Social Heritage Group 2014

### WAR DECLARED.

The following statement was issued from the Foreign Office at 12.15 this Wednesday morning :—  
Owing to the summary rejection by the German Government of the request made by his Majesty's Government for assurances that the neutrality of Belgium will be respected, His Majesty's Ambassador at Berlin has received his passports and his Majesty's Government have declared to the German Government that a state of war exists between Great Britain and Germany as from 11 p.m. on August 4th.

Isle of Wight Times 6 August 1914



## EXODUS OF FOREIGN VISITORS AND TRADESPEOPLE

*Isle of Wight County Press 1 August 1914*

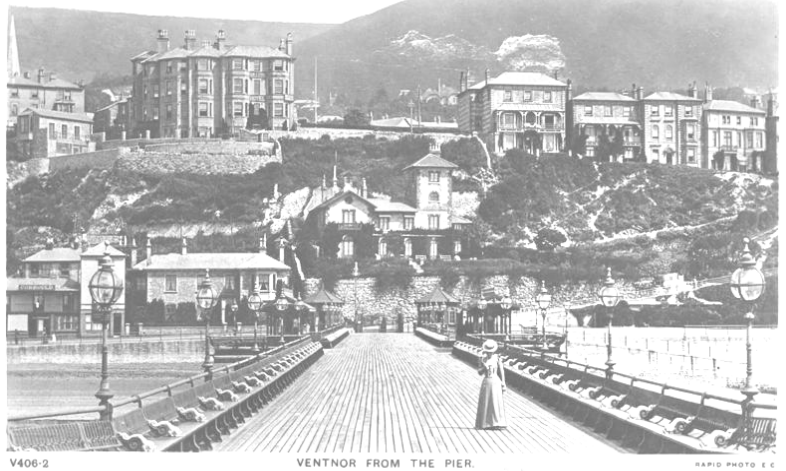
"The outbreak of hostilities on the Continent will mean a serious loss of visitors to Island resorts."



Prince Joachim of Prussia

"On Wednesday several German families hurriedly left Ventnor. There has been a wholesale clearance of Austrian waiters from local hotels."

"On Monday evening, at very short notice, the Kaiser's youngest son, Prince Joachim, who was spending a holiday in Shanklin, as he usually does during the summer, received an urgent summons to his regiment of Prussian Guards. The Prince left the Royal Spa Hotel, where he had been staying in a motor car and hastened to Ryde Pier, where he was able to catch the late boat to Portsmouth."



The Island was a prohibited area and in accordance with the 'Alien Restriction Order' all Germans and Austrians were removed; they included a number of well-known residents, tradespeople, hotel proprietors, governesses, chefs, waiters, and others who had made their home on the Island.

All 'aliens' were required to register, whether their home country was at war with Britain or not and strict rules were introduced.

In November 1914 the order was extended to Turkish nationals.

The expression "alien friend" means an alien whose sovereign or State is at peace with His Majesty, and the expression "alien enemy" means an alien whose sovereign or State is at war with His Majesty.

Aliens may register themselves at the following Police Stations:

Chief Constable's Office, Newport,  
Cowes, Sandown, Ventnor, and Yarmouth.

Penalty (for not Registering, &c.): A Fine of £100  
or Imprisonment for Six Months.

H. G. ADAMS-CONNOR, Captain,  
Chief Constable Isle of Wight.

Chief Constable's Office,  
Newport, I.W.,  
7th August, 1914.

### ISLE OF WIGHT CONSTABULARY.

#### ALIENS RESTRICTION ORDER.

**A** STATE of war having been declared between Great Britain and Turkey, persons of Ottoman (i.e. Turkish) nationality (other than inhabitants of Cyprus) are now Alien Enemies within the meaning of the Aliens Restriction Order.

The Isle of Wight is a Prohibited Area, and no alien enemy is allowed to enter a prohibited area without a permit signed by the Chief Constable.

H. G. ADAMS-CONNOR, Captain,  
Chief Constable,  
Isle of Wight.

Chief Constable's Office,  
Newport, I.W.,  
6th November, 1914.

Source: Isle of Wight County Press 1 August 1914, 15 August 1914 and 7 November 1914



## TERRITORIAL RECRUITING

The call for volunteers was immediate and unrelenting. Posters, rallies, drills and meetings took place all over the Island. Men queued to enlist on what most thought would be a great adventure and an opportunity to go overseas they might not otherwise have. The reality of trench warfare and the terrible casualties suffered was yet to hit home.

*Isle of Wight County Press 8 August 1914*

The appeal for recruits for "Princess Beatrice's" IW Rifles is being rather slowly responded to, though the rate of recruiting has somewhat quickened since the mobilisation of the Army and the embodiment of the Territorials. At the various Island drill halls the work of drilling and equipping the recruits has been proceeding, and it is hoped that young able-bodied men who are unable to join the regulars, will flock into the Territorials, as is their plain duty at this time of crisis. Mr W G Purkis, one of the Special Service Section, who has been on duty since the early part of last week, has issued an appeal to the members of the Newport Rowing Club, of which he is captain, to join the ranks. Other sports clubs in the district and Island should prove useful recruiting agencies. The Miniature Rifle Clubs of the Island are also in a position to furnish a considerable number of most useful recruits, who are already good shots.

### "PRINCESS BEATRICE'S" I.W. RIFLES. MEN OF THE WIGHT!

If you treasure the honour of the Empire, have any thoughts for your homes, and if you venerate the memory of British heroism, come forward and help to protect your Island and your homes.

For years you have been warned and threatened with this German menace. Trouble has now come, and your hesitation to defend yourself will only encourage your foe. Are you not ashamed of the deficiency of numbers in your Island Battalion? Will you not be ashamed when the trouble is over to meet those who have so willingly given their services to protect you and yours? Your services are urgently required. Proceed at once to the NEWPORT DRILL HALL, and let the world see that the whip of conscription is not necessary to compel you to do your duty. You need not join for service abroad if circumstances are such that it is necessary for you to be nearer home. You can join for Home Defence, and that is your own protection.

"Princess Beatrice's" Isle of Wight Rifles require some 800 men to complete establishment. That in itself casts a reflection on the manhood of the Island which will not be easily effaced. I hope that this appeal will be quickly responded to, before it is too late.

Remember Patriotism and Service are one. Come forward and enlist for the Defence of Civilisation; **YOU ARE NEEDED NOW.**

**J. E. RHODES, Lieut.-Colonel,**

*Commanding "Princess Beatrice's" I.W. Rifles.*

*Sandown, 19-8-14.*

*Isle of Wight County Press 22 August 1914*

On our front page was published a stirring appeal by Col Rhodes commanding the "Princess Beatrice's" IW Rifles, calling for men to complete the establishment of the battalion, which is some 300 short. While we have nothing but praise for the young citizens who have joined the local Territorial battalion, we think a great reproach rests upon those civilians of all conditions who, while possessing the requisite physical qualification for service, are remaining outside at a time when England is faced with a crisis unparalleled in her annals. The need of the country is urgent, and in the most earnest words we can command we endorse Col Rhodes's patriotic appeal and implore our young men who have not yet enrolled themselves to come forward without further delay and place the Island in the proud position of being able to say that its Territorial battalion, bearing a Royal name, is up to its full strength.

G.  R.

**NO AGE LIMIT FOR  
EX NON COMMISSIONED OFFICERS.**

All Ex-Non-Commissioned Officers of whatever age, provided they are physically fit and able to drill recruits, are asked to enlist in the New Army

Applications should be made to the nearest Recruiting Officer.

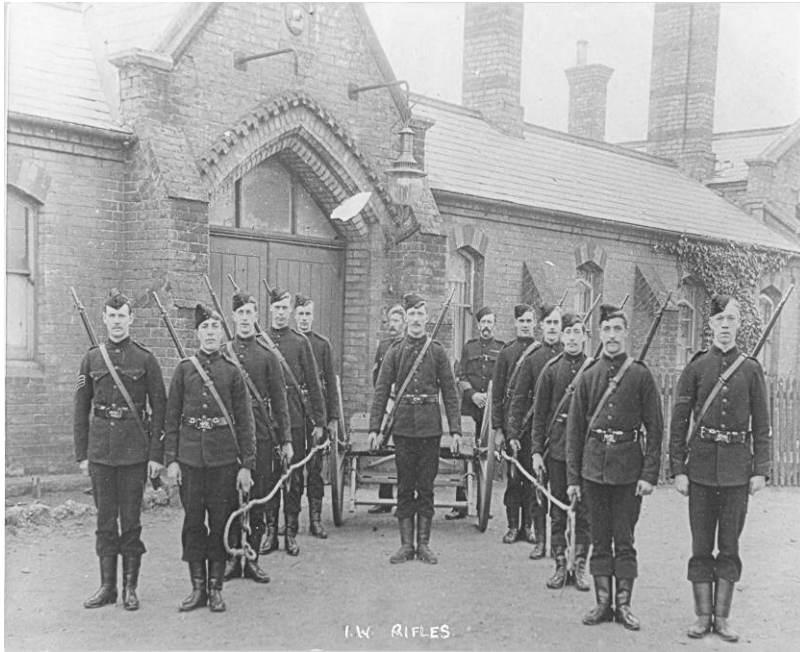
Those who were registered for Class II National Reserve before 11th August will be paid a Gratuity of £5 on enlistment on production of a Certificate signed by Executive Officers.

Signed R A G. HARRISON,  
Secretary, Colonel,  
County of Hampshire,  
Territorial Force Association.  
**GOD SAVE THE KING.**



## ROUSING RECEPTION IN RYDE

*Isle of Wight County Press 5 September 1914*



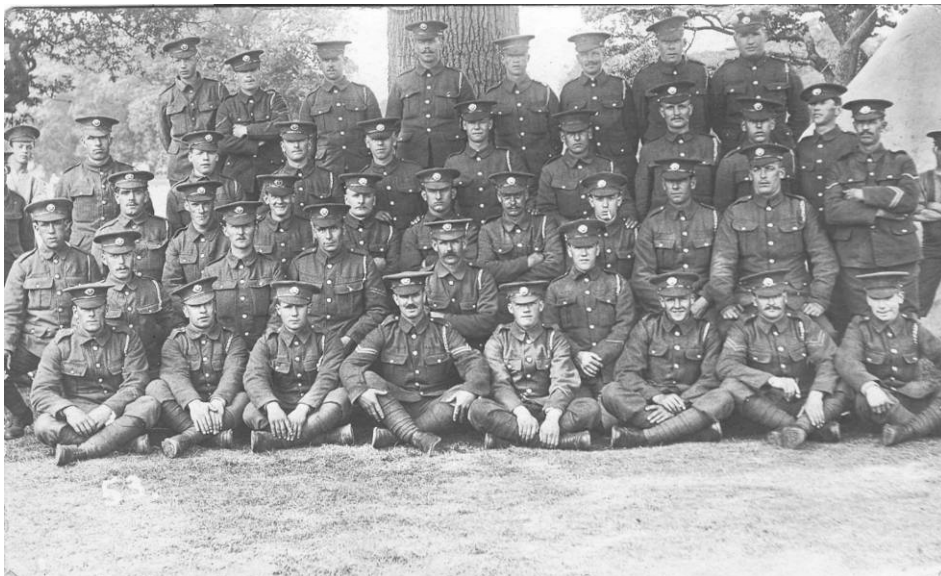
"At noon on Thursday one could have imagined himself anywhere but in the health resort of Ryde. The aspect of the whole place was transformed, and for hours the military reigned supreme. The whole community responded as one man, and no body of men could have had a better reception than that accorded to the 8th Battalion Hampshire Regiment by Ryde on Thursday.

Townfolk turned out in their thousands and the gaily bedecked streets right along the route were crowded. They had had a hot march, and their faces and sturdy necks were bronzed, but there was not the slightest appearance of fatigue; in fact when the orders were given they were acted upon with that readiness, smartness, and precision that bespeak a thoroughly fit body of men."

"Detachments of local Territorials were the first to put in an appearance. They were as smart as the rest, and walked along in regulation step with the appearance of fully trained men.

The Hampshires were headed by the Scouts' bugle band. The men were whistling accompaniments to the march being played, but the men behind were singing popular songs, "Who's your lady friend" apparently being a great favourite. They were marched off in companies to the Town Hall, where they partook of refreshments.

The men then sauntered about in a free and easy manner, finding friends, engaging in conversation with spectators and mixing with the crowd generally. One was particularly struck with the attention these "Tommies" received from the young ladies. There were many well-known young ladies wandering along the ranks offering the men apples, plums and other refreshing fruit. Other ladies, following their example, hastened to the nearest confectioner's and returned with a good supply of chocolate, which they distributed amongst the men."



Photographs courtesy of the Isle of Wight Record Office



## RYDE RALLIES TO SUPPORT THE WAR EFFORT

The reality of the fighting very soon became all too clear for Ryde residents and families. Lists of those killed, wounded or missing were published in the local papers every week. They also published extracts from letters sent from the front to family and friends in Ryde.



This extract dated 17 September 1914 from a sergeant in the Scotch Fusiliers speaks of the retreat from the Marne.

"We have been through very stirring times – on the heels of the enemy during the last fortnight trying to drive him back to his own country. There has been a big effort for the last four days; neither side seems to be gaining much headway. Our fellows were in the trenches three days and nights, fighting all the time. Casualties have been very heavy – the shrapnel and heavy gun firing on both sides have been awful...The village just behind us has nearly been demolished by the guns of the enemy. It is very dreadful to see the women and children wandering about homeless..."

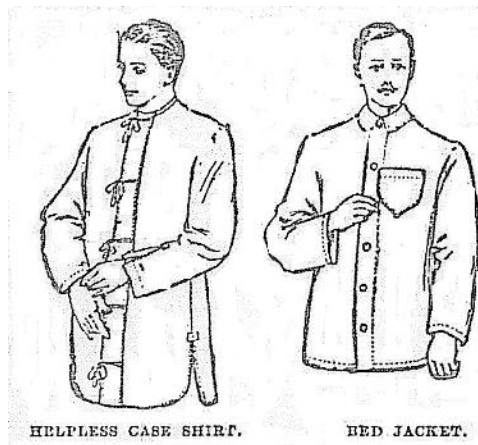
Isle of Wight County Press 7 November 1914: Stoker Bernard Richards, of the Royal Naval Brigade, writing to his mother at Ryde from Holland where he was interned, after taking part in the defence of Antwerp, said: "Just a line to let you know I am quite well and safe after having experienced the most awful week of my existence... It is a week since we left old England all of a rush, and it is enough to make one shudder when looking back, but how thankful all of us are who have come through alive from Antwerp. Out little lot tried to stop the Germans, who were about eight to one of us. We find some consolation in knowing that we accomplished the task that was set for us. The battalion I am in lost the most men, as we did more fighting and time under fire than the rest. Our leading officer was killed almost by the first shell."

Despite the pain and suffering affecting the town, Ryde kept its spirit and rallied to support the troops in many ways.

*Isle of Wight County Press 15 August 1914*

The Ryde Branch of the British Red Cross met on Saturday, Mrs Fetherstonhaugh, of Gwydyr House, presiding and decided to appeal for funds. A very generous response has been received, the subscriptions amounting to £1190 11s 6d.

We understand that the monks at Quarr Abbey are converting the greater part of their monastery into a hospital for the wounded, and maintaining it at their own expense.



*Isle of Wight Times 20 August 1914*

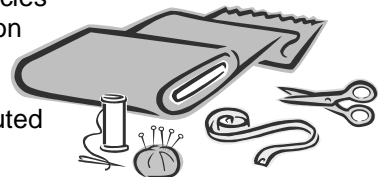
Thousands of women who cannot leave their homes to attend the sick and wounded will be pleased to know they can give practical service in this time of national crisis. The British Red Cross Society require many thousands of suitable garments which can easily be made at home at very little cost. Required most are helpless-case shirts, men's nightshirts, nurses' aprons and surgeons' overalls.



Dr R C H Kennedy has publicly intimated that he is prepared to attend any women, children or any other dependants of our sailors or soldiers during the war free of charge, and further that he has arranged with a local chemist to provide medicine, dressings, etc., gratis.

*Isle of Wight Times 27 August 1914*

The Central Needlework War Guild, which has been started for providing suitable articles of clothing for those on active service, has been met with a liberal response, close on £70 having been subscribed towards the purchasing of materials. The Mayor (Councillor John I Barton) heads the list with £10, and Lady Calthorpe, Mr W P Brigstocke, Mrs Benett Brigstocke, Mrs Sidebottom, and Mrs Hills have each contributed £5. Mrs E C Eddis, the wife of the Vicar of Holy Trinity, is the Hon. Secretary.



*Isle of Wight Observer 7 November 1914*

Miss Forsyth is collecting pots of jam for distribution among our sailors of the Fleet, and that lady would be glad if those who desired to assist in this direction would send their gifts addressed to her, care of Mr Colenutt, grocer, Union Street, who would pack the same for forwarding to their destination.

## LIFE GOES ON AS 'NORMAL'

Isle of Wight County Press 22 August 1914

The Ryde Advertising Association have decided to advertise in the daily papers the fact that Ryde is one of the best places in which to spend holidays...The past week has seen the arrival of more visitors. Compared with the corresponding period of last year there is, of course, a great decline, but considering everything the present condition of things is looked upon as satisfactory. Normal conditions prevail everywhere.

Isle of Wight Times 27 August 1914

Mr Douglas Hall, MP for the Island, calls attention to the peaceful and quiet condition of the Island in spite of the war, and points out how unfounded are the foolish rumours which have been circulated, to the effect that communication with the Island is cut off or that food prices are high or in danger of being increased. The steamboat traffic is practically normal.

### Normal Prices.

**WHITE'S LEMON CRYSTALS** prepared from the pure fruit juice; one bottle makes two gallons of delicious lemonade; 4d. per bottle; 4 for 1/3.

**CARBOLIZED TOOTH POWDER**, the ideal dentifrice, removes tartar, arrests decay 4d., 8d., 1/- and 2/3 per tin.

**HONEY** An excellent substitute for Butter or Margarine, in large pots, 7d., 1/2, 2/2.

**SYRUP OF FIGS**. A most agreeable Laxative Family Medicine of great value, 7d. and 1/1.

**TOILET SOAPS** of superior quality, made from the purest materials. 1gd. per tablet, 1/5 per dozen.

**HAIR BRUSHES & COMBS**. Our stock is particularly well chosen. Prices from 8d to 16/- brush and comb.

**SPONGES**. New Season's importation of Honeycomb, Turkey, Cuban, &c., from 3d. to 15/6.

**Timothy White & Co. Ltd.**

*The Reliable* CASH CHEMISTS

PHARMACIES THROUGHOUT THE ISLAND & SOUTH OF ENGLAND.

### JOHN DIMMICK, The Nurseries, RYDE.

### AUTUMN GARDENING.

**PEAS & BROAD BEANS.**

**SWEET PEAS** in separate colours and special mixture of over 250 varieties.

### BULBS

for your beds and borders, also for growing in Bowls or forcing for Xmas decoration.

### ROSES.

Dwarfs, Climbers, and Standards, also Weeping Standards, good heads.

Our Nursery Stock covers many acres and is in very fine condition. We invite you to inspect our stock. Satisfaction guaranteed.

Price Lists Free on application.

Competent men sent to advise as to laying out Gardens, Lawns, and Tennis Courts.

**Landscape Gardening a Speciality.**

### NO ADVANCE IN PRICES.

—

We are making no advance in prices other than in those cases where Manufacturers and Merchants have raised theirs.

—

### NO ADVANCE IN TEA.

**Hartley's Jams Same Price.**

**No Advance in Cocoa.**

**All Soaps Same Price.**

—

Butter, Cheese, Lard, &c.,  
all at reasonable prices.

—

### THE TEA SHOP for Value.

—

### H. G. JOLLIFFE,

126 High Street, RYDE.

Tel. 370.

Adverts from Isle of Wight County Press August – December 1914

Isle of Wight County Press 29 August 1914

Our windows are full of special bargains and are well worth a visit. Groceries and provisions are as cheap as ever they were, and in many cases cheaper. IW Dairy Butter ½ lb; Tomatoes; Sugars at lowest daily prices... – C J de Launay & Son, 120-121 High Street, Ryde.



Isle of Wight County Press 31 October 1914

For those who take a coffee breakfast one trial of our special "Plantation Blend" at 1/6 per lb will be a delightful experience. It is all coffee, that is – pure. We guarantee it. – H G Jolliffe, The Tea Shop, Ryde.

Isle of Wight County Press 28 November 1914

Xmas Puddings & Mincemeat – We invite inspection of our Splendid Range of Dried Figs from 4d per lb – R Colenutt, IW County Stores, Union Street, Ryde. Tel 470.



Isle of Wight County Press 26 December 1914

There is nothing nicer as a Christmas gift than a good rubber hot water bottle, or more useful than hair brushes or toilet requisites. A large selection at usual low prices is shown by Messrs Timothy White & Co, Ltd. the Reliable Cash Chemists, who have branches throughout the Island.

