

BEYOND THE GRAVES

Volume 11, Number 1, January 2016



SNAPSHOT OF RYDE, 1931

1931 was not a particularly significant year. George V had been king since 1910 and would remain so for another 5 years. Ramsay MacDonald was the Prime Minister. National events included the opening of the Sadler Wells Theatre and Whipsnade Zoo; the Highway Code was issued and the National Trust for Scotland was established. (coin images from www.gold-sovereigns.co.uk)



"Isle of Wight Times" DIRECTORY of RYDE & DISTRICT

Publishing Office: 72 UNION STREET, RYDE
'Phone: Ryde 128.

First Year. 1931. Price 1/=

1931 was not a particularly important year in Ryde's history but it did see the publication of the "The Isle of Wight Times Directory of Ryde and District." The Publisher's Forward states:

'The Isle of Wight Times has pleasure in offering the public of Ryde, St. John's, Haylands, Binstead and District the First Edition of what is hoped to be the most useful Local Directory ever published. The need for a really adequate Local Directory was made plain by the Isle of Wight Chamber of Commerce, and this issue represents the result of much thought, patience and expense.'

It was priced at 1 shilling and would appear to have been in competition with the well established "Kelly's Directory," who also produced an edition for Ryde in 1931, priced at 3 shillings with an extra sixpence for postage. The combination of information from both Directories, especially the many adverts, gives us a valuable snapshot of Ryde in that year.

OFFICIAL INFORMATION reveals that Alderman Charles Joseph De Launay is Mayor. He had been re-elected after his first term in 1929. Unfortunately Mr. De Launay was to die in 1932 and his obituary reported *'those two years of constant and unremitting service for the public cost him much in strain on health and strength.'*

(Isle of Wight County Press 11 June 1932)

Mr. Hollis B. Fowler was the president of the Isle of Wight Chamber of Commerce and according to the local press in 1931, *'was not too hopeful about the prospect of a Solent Tunnel. It would be the making of the Island.'*

(Isle of Wight Times 29 January 1931)

First Edition.

1931



1931

KELLY'S DIRECTORY OF RYDE and NEIGHBOURHOOD

("BUFF BOOK")

THE BOOK COMPRISES:—
STREET SECTION,
PRIVATE RESIDENTS SECTION,
COMMERCIAL SECTION,
TRADES SECTION,
VILLAGES SECTION,
OFFICIAL INFORMATION; and a
MAP

The County Constabulary - although authorised for a strength of 75, had actually only 68. The Ryde and District Section consisted of 1 inspector (A. Morrison), 2 sergeants, and 12 constables. The main station was in Station Street and there were substations at Binstead, Haylands, Oakfield and Seaview.

Hospitals - Kelly's mentions not only the Isle of Wight County Hospital in Ryde but also the Infectious Diseases Hospital at Smallbrook, run by Miss Whitty.

Both Directories contain several adverts for Private Nursing Homes. Sister Gentle, at the Westward Nursing Home sounds very appealing.

A hospital of a different kind is 'The Fountain Pen Hospital' in the High Street!

THE GIFT HOUSE,
172 HIGH STREET,
RYDE.


FOUNTAIN PEN HOSPITAL.
HAND-BAG SPECIALISTS.

Telephone: RYDE 353 and 396

Westward Nursing Home

SISTER E. GENTLE,
S.R.N., F.B.C.N., M.C.N., M.R.B.N.A.
Registered Nursing Home.

**HOME FOR
THE AGED
AND SICK**
All Nerve and Medical Cases



Quiet District. Few minutes
from Shops and Pier.
TERMS MODERATE.

22 ARGYLL STREET and
76 WEST ST., RYDE, I.W.

Churches - The Times Directory lists 12 main churches in Ryde and one in Binstead. Kelly's, however, has 10 headings under 'Places of Worship', including 'Wesleyan,' 'Various' and 'Missionaries etc.' and names 26 establishments in all. Kelly's also states the capacity of the bigger churches, All Saints', Holy Trinity, St. James', Congregational (George St.), Wesleyan (Garfield Rd.) each with around 1000 sittings. Whilst the Baptist (George St.), Primitive Methodists (Well St.) and Salvation Army Citadel (Green St.), seat between 450 and 500. St. Mary's Roman Catholic has a capacity of 350 and the Zion Chapel (William St.) seats only 80.



Talking of churches in 1931, the St. Michael's Magazine had an article about men joining their choir. The local press commenting on this stated: *'There is nothing a man likes more than to get in a dark corner and sing to himself. He thinks he is no end a great fellow if he makes the right notes, but ask him to sing in public and he is quite bashful.'* (Isle of Wight Times 5 February 1931)

Schools - 10 main schools in Ryde and 1 in Binstead are listed but Kelly's also mentions the School of Art in George Street which has a head master (day), W. C. Wearne and a head master (evening), H. Dixon. Both Directories list and have a variety of adverts for many private schools.

ST. AUSTELL'S
RYDE, I.W.

Preparatory School—Day and
Boarding—for Boys (7—14½).
Junior Department for Boys
from 5 years.

For particulars apply to the Head Master—
G. R. TADMAN,
B.A., M.C., (Hons. Maths.) Camb.

HIGH PARK SCHOOL, RYDE.

Pupils prepared for College of
preceptors, Cambridge, or other
examinations if desired.

Special attention given to delicate or backward children.

Principal: **MISS MILLER.**

High Park School was situated at "St. Bedes," Salisbury Road, Ryde, and could accommodate 80 boys and girls up to 16 years of age.

Ryde Grammar School.

Private Boarding and
Day School for Boys

On the Board of Education's list of
approved efficient Schools.

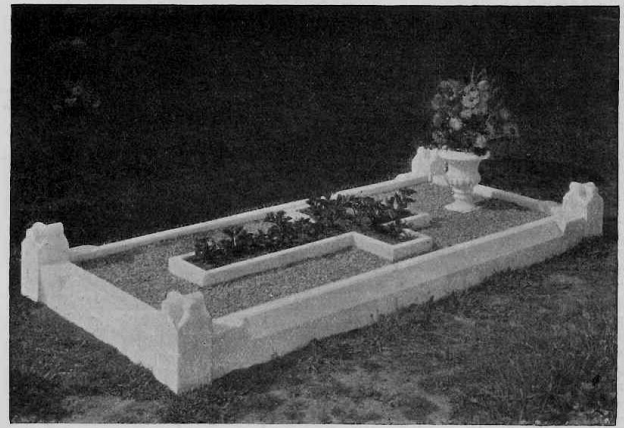
Complete preparation for Universities,
Professions, Services and Commercial
Careers.

Telephone: RYDE 229.

Whilst on the subject of schools, a local paper in 1931 reported: *'We hear complaints of the increasing sophistication of schoolboys, but we are glad to be able to reassure our readers that the modern schoolboy is quite alright. In a local case brought before the bench a boy told how he bought an electric lamp for a shilling and the next day sold it for ink, a fountain pen, and some razor blades in the time honoured way of schoolboys. The more times change, the more he remains the same.'*

(Isle of Wight Times 12 February 1931)

Estab. 1847 **T. & J. ELLERY,** Tel. 317
Monumental Sculptors,
37 WEST STREET, RYDE - Opposite Cemetery.

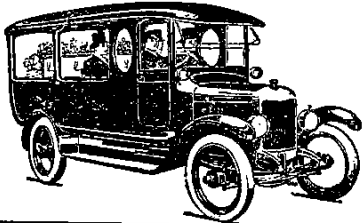


Business - Undertakers often provide interesting adverts, with drawn and photographic images.

J. PERKIS & SON

(F. E. PERKIS, Proprietor)

Undertakers, &c.



Funerals Completely
Furnished

Prompt Attention
Given to all Orders

TELEPHONE 514

UPHOLSTERERS

New Mattresses Made to Order
and Old Ones Remade
Beds and any other Bedding Purified

**118 HIGH STREET } RYDE, I.W.
& 30 HILL STREET }**

Illustrated adverts are generally more eye catching, for example, Trinder's of Seaview and Savage's Shoes.

GLOVES, HOSIERY,
RIBBONS, LACE,
MILLINERY,
VELVETS

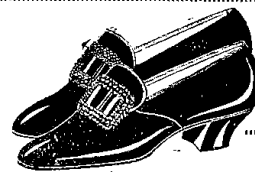
Trinder's

DRAPERS
AND
OUTFITTERS

A LARGE SELECTION OF LADIES' & GENTS' BATHING COSTUMES

PIER ROAD, SEAVIEW, I.W.

IT'S LIKE WALKING ON AIR.



PERFECTION
OF
COMFORT.

These delightful Super Comfort Shoes are made by hand, pliable and yielding to every movement of the foot. Cut from the finest skins in Black or Brown Glace. For such comfort the price 25/9 is surprisingly moderate.

W.B. SAVAGE

185, 186 High Street,
RYDE, I.W.

Island Roads 1931 - *'This Island has pavements and roads made specially for boot factors and repairers, and while there is so much grit about there will be a big demand for leather.'*

(Isle of Wight Times 29 January 1931)

Theatricals - Kelly's provides a lot more detailed local information, for example, the popularity of theatricals.

'There are several amateur theatrical, musical and operatic societies in Ryde, including the Ryde Amateur Players, Ryde Philharmonic Society, Ryde Amateur Operatic Society, and Ryde New Amateur Operatic Society.'

Entertainment is available at the Theatre Royal and the Scala. The most successful film of the year was 'Dracula,' starring Bela Lugosi. When the film premiered in New York on 12 February 1931, the newspaper reports described how members of the audiences fainted in shock at the horror on screen. This publicity did help ensure people came to see the film, if for no other reason than out of curiosity.




(Wikipedia image & info)

<p>THEATRE ROYAL RYDE. Proprietor, A. HILL. Tel. 237</p> <p>—</p> <p>TWICE NIGHTLY</p> <p>6-15 and 8-40</p> <p>Matinee Wed. & Sat. at 2-30</p>	<p>SCALA, RYDE. Proprietor, A. HILL. Tel. 162</p> <p>—</p> <p>TWICE NIGHTLY</p> <p>6-15 and 8-40</p> <p>Matinee Saturday at 2-30</p>
--	--

-o-o-

Always an enjoyable Programme of the Latest Talking Pictures.

Hotels - As Ryde is a holiday resort, hotels were keen to advertise. The Old House was at 22 Nelson Place. The photograph of the Royal York in George St. shows it is not yet the epitome of Art Deco style (due to be rebuilt 1938.)

<p>THE OLD HOUSE. PRIVATE HOTEL, RYDE.</p> <p>The House is situated in an ideal position in its own large secluded grounds, one minute from splendid bathing beach and near Golf Links and Station, and the Establishment is run under the personal supervision of the resident proprietors.</p> <p>—o—o—</p> <p>SEPARATE TABLES. — EXCELLENT CUISINE. SPECIAL WINTER TERMS.</p> <p>—o—o—</p> <p>FOR TARIFF APPLY TO MR. & MRS. KYNASTON.</p>	<p>R.A.C. — 'Phone RYDE 215.</p>  <p>H.R.A. — 'Grams ROYAL YORK HOTEL.</p> <p>ROYAL YORK HOTEL GEORGE STREET, RYDE.</p> <p>FIRST-CLASS RESIDENTIAL, FAMILY and COMMERCIAL HOTEL.</p> <p><u>FULLY LICENSED.</u></p> <p>Resident Proprietor — — MALCOLM M. WILSON.</p>
--	---

The Local Directory is primarily useful for information on who is residing or has business in a particular street and is a forerunner of the modern telephone directory. As we would expect both of our volumes for 1931 are very similar.

An amusing newspaper article at the time reports a complaint:

'The names of our streets are not imposing enough, and certainly do not give the flavour of a seaside resort. For instance, Nelson Street seems to suggest nothing more than an alley in the back of beyond.'
 (Isle of Wight Times 19 February 1931)

With thanks to Simon at the Isle of Wight County Records Office for scanning many images from the Isle of Wight Times Directory and Kelly's Directory of 1931.