

# BEYOND THE GRAVES

Volume 13: Number 3: July 2018

## YOU MUST REMEMBER THIS ~ As Time Goes By



This famous song [written in 1931 by Herman Hupfield] featured in the movie 'Casablanca' – but what do you remember of our town of Ryde looking at these nostalgic photographs from the 1950's, 1960's, etc., all from the Roy Brinton Collection, unless acknowledged.



Did you buy your candy striped sheets at Fowlers in Union Street? They really were the 'in thing' to have and for your neighbours to see them blowing on the line. [Image Wikipedia]



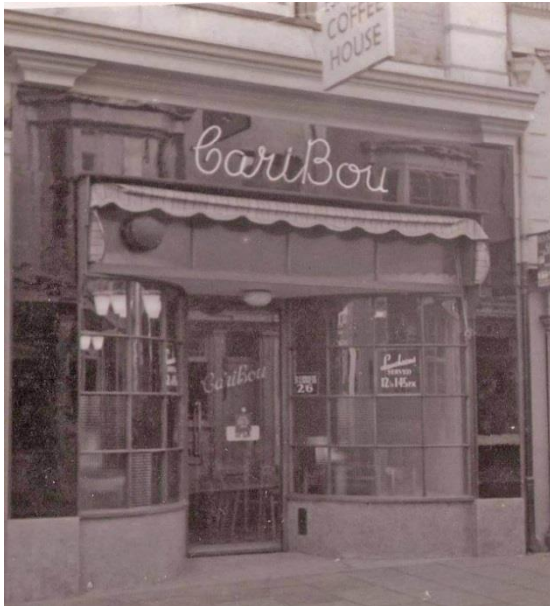
Or did you go to Hill's in the High Street for your linen? Do you remember how the money was put in 'pods' and then whizzed along overhead wires, to the cashier and then whizzed back with your change?

In the photograph of S. Fowler & Co as it was before the disastrous fire, there is a Vauxhall Cresta parked outside the shop. Ann Barrett can remember having a similar car.

**HILL'S STORES, Ltd., High St., Ryde,**  
**DRAPERS & COMPLETE HOUSE FURNISHERS.**  
**STERLING VALUE IN ALL DEPARTMENTS.**

Isle of Wight Times 24 November 1960- The Business Association has a plan – Cross Street may become Ryde's "Show Thoroughfare", Out of 14, 11 proprietors have expressed interest. Also discussed, - that there is no need for buses to come through Union Street, and there should be limited parking.

Isle of Wight County Press 29 April 1961 - The majority of businesses and residents were against proposals to restrict parking in Ryde town centre to 30 minutes. Ryde Borough Council wanted to implement the restriction as a way of freeing up more spaces. However, business owners and residents felt 30 minutes did not allow enough time for shopping.



**Did you go into the 'Caribou' in Cross Street and play the juke box?** Maybe you went to the Arcadia on the Esplanade, or where the Rockers met in the High Street instead.



Perhaps you liked Rock & Roll – Elvis Presley, Blue Suede Shoes [1956]; Buddy Holly, Peggy Sue [1957]; Tommy Steele & the Steelmen, Rock with the Cavemen [1956]. Then there was Connie Francis, Stupid Cupid [1958].

What were your favourites in the 1960's? The Monkees, Daydream Believer [1967]; Frank Ifield, I Remember You [1962]; Pat Boone, Speedy Gonzales [1962]; Roy Orbison, Pretty Woman [1964]; Petula Clark, Downtown [1964]; Neil Sedaka, Calendar Girl [1960].

Thank you to our Music Advisor, Dave Bushell, for these memories.

**IW Times 29 June 1961 - In 1961 the owner of the Caribou, Robert Telford, applied for a music and dancing licence for weekdays and Sundays. This provoked the question "what is appropriate music for a contemporary style coffee bar to play on a Sunday?" In the event the Sunday licence was restricted to 10 pm.**

**Did you go to see the film 'That'll Be The day' in 1973, starring David Essex and Ringo Starr?** Were you an extra when they filmed some scenes at the Caribou.

**Did you buy LP's and Singles in Studio 4?** Do you remember their distinctive yellow bags?



Teagues in Union Street was another place to go, not only for records, but for stylish record players and televisions.

**Isle of Wight Times 21 May 1964 - W. Teague and Co. Ltd., celebrated its jubilee on Tuesday evening. It was exactly 50 years before, on May 19, 1914, that "The Island music shop," as it is known, came into operation as a private company, having taken over the Union-street business from the executors of the late Mr. William Teague.**

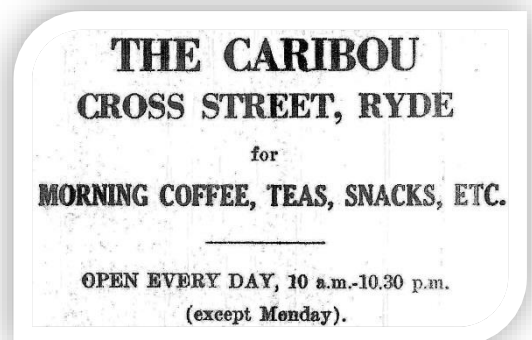
**Isle of Wight Times 18 March 1965 - We like the notice that was in a Ryde television repair shop this week. It read: "Do it yourself---then bring it to us."**

Image of the Caribou and Studio 4 Record bags - Ann Barrett Collection

Juke Box image – Wikipedia

Caribou Advert – IW County Press 25 December 1967

Teagues Advert – IW Times 28 Nov 1968





## Minghella's of Ryde

(ESTABLISHED 1947)

Are happy to announce that their re-modernization and extensions at the FORMER MAYFAYRE CAFE) are now nearing completion. The Ice Cream Cash & Carry department, the quick service snack bar, delightful luncheon and tea room, will all provide a completely new and up-to-date service for our clients in comfortable and spacious surroundings.

### THE VENETIAN ROOM

upstairs (with private entrance), will soon be opening, offering a well appointed and fully centrally heated room for up to 60 persons, available for meetings, conferences, parties, weddings, etc., with or without self catering or our catering facilities.

ALL ENQUIRIES - RYDE 2178

**You must remember the Mayfayre Café in the High Street?** These ladies may be meeting for morning coffee and one of the delicious ring doughnuts, freshly cooked and covered in crunchy sugar. Do you remember using coach-built prams and when ladies took a basket shopping as seen in this photograph?



In the 'Islander' of June 1972 Minghella's of Ryde [advert left] were featured after a revamp and the 'Mayfayre' continued under its new name. It had begun life with just four tables, but the larger premises, still being run by Eddie Minghella and his family would continue to sell their famous ice-cream.

**Isle of Wight Times 7 January 1965 - Clean Food -** At a meeting of the Caterers Association, it was decided to investigate the possibility of establishing a Clean Food Guild. Cllr. Minghella, chairman, said it would encourage greater cleanliness in hotels and restaurants.

Just along from the Mayfayre there were two shoe shops [Freeman, Hardy & Willis and Olivers], then Fosters for menswear and Dorothy Perkins with ladies' clothes next door.



..... here is Anglesea st .....

- 23 Pollard & Ramage Ltd. chemists & opticians. Tel. Ryde 2367
- 24 Hobbs E. jeweller
- 25 Grace Jsph. R. & Co. radio engnrs
- 26 & 27 Bevins J. draper
- 28 Scotch Wool & Hosiery Stores, wool stores
- 29 Barnett R. C. cooked meat dlr
- 30 Gumbrell Percy Jas. confctnr
- 31 Way A. F. & Co. tobccnsts
- 32 Marders (Mrs. A. Seedman, proprietress), gowns
- 32a, Hills Frank
- 33 Mayfayre Hotel (Mesdames L. & G. Arcari)

Details of the High Street listing from the Kelly's Directory of 1951

- 34 World's Stores Ltd. grocers
- 35 Lipton Ltd. provsn. mers
- 36 Freeman, Hardy & Willis Ltd. boot mkr
- 36 Harget Herbt. Geo
- 37 & 147 Oliver Geo. (Footwear) Ltd. boot mkr
- 37 Groome Ebenzr
- 38 Bull E. Ltd. outfitters
- 39 Maypole Dairy Co. Ltd. provsn. mers
- 39a, Tomasin Arth. Hy. dentist
- 40 Star Hotel, Wm. Daniell

..... here is Star st .....

**Isle of Wight Times 10 August 1961 - Despite some complaints,** the Council do not consider any special action is necessary to prevent annoyance from portable radios in the town.

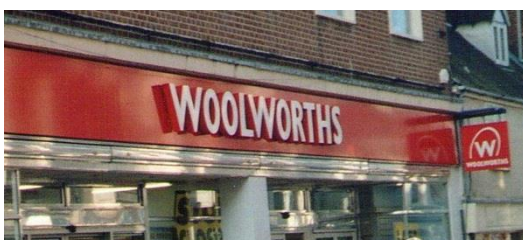
**Did you buy from the 'Pick 'n' Mix' counter in Woolworths?** Were the purple ones your favourites? Founded in 1909 Woolworth's was a



High Street name for over 100 years.

Woolworth's facia in Ryde High Street just before closure. {RSHG Archive}

Pick'n'mix image - Wikipedia







**You must remember Woods & Wilkins Ltd. in Cross Street.** Over two floors, or maybe even three, this hardware store stocked everything from ironing boards as displayed in their window behind this couple, to the tools advertised in this advert in the IW Times of 12 January 1956.

**Or did you go to Cobbett's shop in the High Street for your DIY goods?** Ann Barrett recalls Jack Cobbett as a

real gentleman, quietly spoken and polite. He worked part-time in the summer as a Seaview Services coach driver.

### Do you remember when there were eight chemists in Ryde?

Isle of Wight Times 24 March 1966 - For the week's evening rota, chemists' listed for Ryde were: Timothy White & Taylor, St Thomas' Square; Pollard & Ramage, High Street; Boots, St Thomas' Square; Nicholson, The Esplanade; Boots, High Street; Blakely, Cross Street; Gibbs & Gurnell, Union Street; and Farmer, High Street.

**GOOD NEWS**

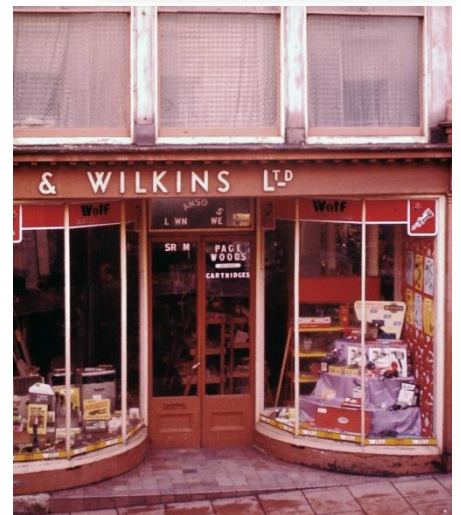
**WOLF CUB**  
Home Constructor Equipment  
**NOW AVAILABLE**  
**ON HIRE PURCHASE TERMS**  
30/- Deposit and easy monthly payments  
CALL FOR PARTICULARS  
YOU ARE INVITED TO INSPECT THESE PRODUCTS IN  
OUR TOOL DEPARTMENT  
\* \* \*

**LARGE SELECTION OF  
TOOLS FOR ALL TRADES**  
\* \* \*

★ CABINET FITTINGS AND BUILDERS' HARDWARE ★  
ALWAYS IN STOCK

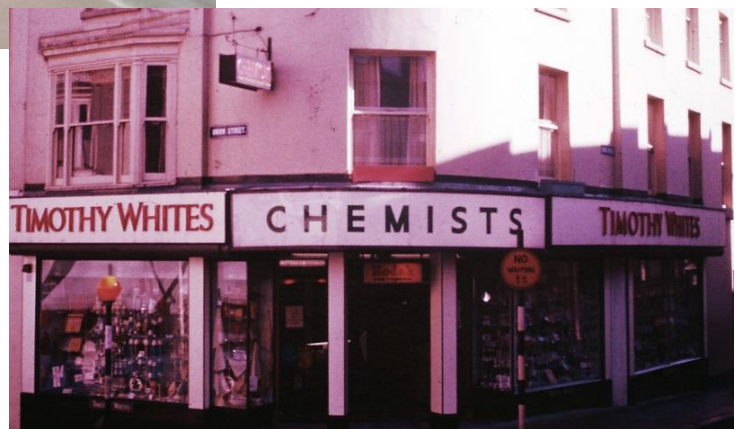
**Woods & Wilkins**  
Limited  
**30-31 CROSS STREET, RYDE**  
Telephones 2343 & 2610

Garden, Farm and Dairy Equipment      Ironmongers Tool Stockists



This photograph of Boots in St. Thomas' Square shows a car coming up Union Street, and the glimpse of a bus coming down from the High Street.

Weekly deliveries from their Aldershot warehouse to Timothy Whites at the top corner of Union Street and Cross Street [Photograph right] were made through a grid that opened up in the Union Street pavement to a chute into the basement. It wasn't so easy at the household branch in the High Street where larger items had to be man-handled along a very rough alleyway to the side round to the rear. Thank you to Colin Hunt for these recollections.



### Isle of Wight Times 25 February 1960

**Just after a window dresser had finished arranging the window of Timothy White and Taylor's Chemists' shop in Union Street on Monday, the glass shelves collapsed and brought goods cascading down. The shop window was cracked and will have to be replaced, but nobody was hurt.**





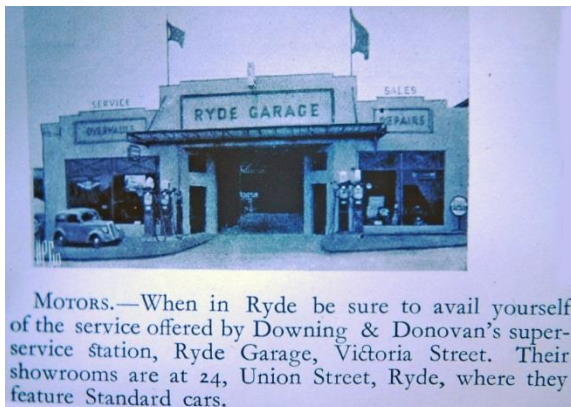
Did you own the Austin Metropolitan, Reg No RDL 491, or maybe the black Austin [CWW?] 707? They were parked in Union Street when it was still two-way traffic, outside Marder's the ladies dress shop and Jones the shoe shop.

Isle of Wight Times 12 August 1965 - We have been visitors to the Island for the last seven years, and were delighted to see that they had made Union Street a one-way street. It's a pleasure to cross the road, but we can't understand why cars still park on both sides for hours at a time, when notices say 30 minutes only in any one hour. Mr. and Mrs. Trollope.

Marder's advert in the IW County Press of 31 July 1965 was promoting their sale bargains – do you remember when shops traditionally had just two sales a year? Did you queue outside Pack & Culliford for the 'Star Bargains'?

In the 1960's, thanks to the developments at ICI, a new synthetic fabric became popular, it was 'wash & wear' Crimplene. 'A' line dresses for ladies became the fashion and then there were Terylene shirts for men. Just watch out for the static!

Did you purchase your new car from Downing & Donovan's Union Street Showroom or use their garage in Victoria Street?



MOTORS.—When in Ryde be sure to avail yourself of the service offered by Downing & Donovan's super-service station, Ryde Garage, Victoria Street. Their showrooms are at 24, Union Street, Ryde, where they feature Standard cars.

Did you buy your knitting wools, threads, buttons, etc., from the Ryde Wool Shop? The assistants had to run up and down the stairs to the stock room every time for customers who had wool put by. Like other shops in the town they had attractive window displays – especially for the Queens Silver Jubilee in 1977. [Remembered by Ann Barrett & Hilary Lloyd]

Pattern – Ann Barrett Collection  
Advert – IW County Press 26 July 1975

Isle of Wight Times 21 November 1963

A talk on "Home Decorating" was given by Mr. R. Jones, a representative of Messrs. Watts, of Ryde, to the British Legion Women's Section, he showed specimens of floor, wall and ceiling covering materials.

Isle of Wight Times 21 April 1960 - Mr Alan Head got off to an unlucky start in his first day as manager of the Ash Tree Restaurant, Union Street, Ryde, on Good Friday when a fish fryer blew up in the kitchen. The Fire Brigade were quick on the scene and prevented much damage.

**Final  
SALE  
Reductions**

We have wonderful selections of very beautiful branded Fashionwear and Sportswear—This is your great opportunity to buy the latest styles at fantastically reduced **SALE PRICES**

500 LOVELY DRESSES	all under 40/-
500 LOVELY BETTER DRESSES	under 80/-
300 ASSORTED SKIRTS	under 20/-

And 100s and 100s of true SALE BARGAINS  
In all sizes from TEENAGE to 50 HIP

**MARDERS** Fashion Centres NEWPORT  
RYDE  
SANDOWN

**The new collection  
of French  
PHILDA YARNS**

from the French  
master knitters

new colours!  
Come and see  
our marvellous  
range of knitting  
patterns

**Ryde Wool Shop**  
14 HIGH STREET, RYDE. Tel. 2537

9002-9"

P&B Wools  
of Four-Ply Weight

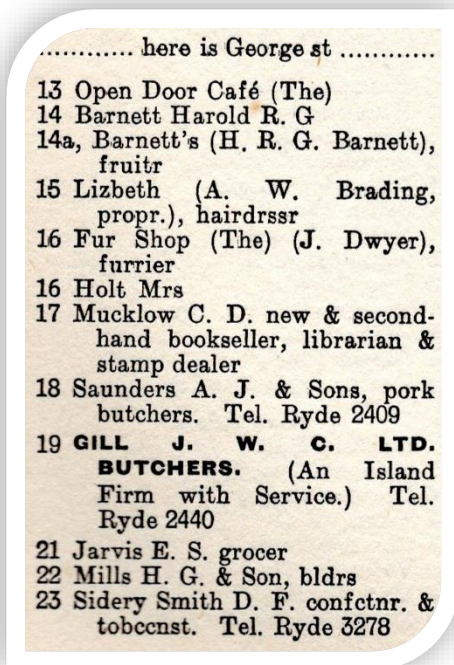
28 30 32 inch chest

THE  
**RYDE WOOL SHOP**  
14 HIGH STREET  
RYDE  
PHONE RYDE 471



## Did you shop in Cross Street?

Part of the Cross Street listing from the Kelly's Directory of 1951



Isle of Wight Times 11 July 1963 -Some Ryde tradespeople, notably fruiterers and greengrocers, are avoiding causing traffic jams by unloading goods in the central car park at George-street. This unorthodox use of the car park was in a report of the Public Works Committee.

**Did Lizbeth style your hair?** Advert from a Commodore Cinema Programme of 20 December 1953

**Did you buy a motor cycle from Pickering's Shop in Cross Street at the junction of George Street?**

The Everest Expedition achieved their Crowning Glory

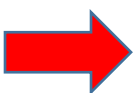
Your hair is your crowning glory and all eyes follow you after our Salon Treatment with a "JAMAL" WAVE

**Lizbeth**  
HAIR STYLISTS

15 CROSS STREET, RYDE Tel. 2927

Other systems available, all at moderate charges

**Who remembers Green Shield Stamps?**



Have you got one favourite memory of 1950's and 1960's Ryde? If so jot it down, in about one line, on a piece of paper, or contact one of the committee, before the RSHG October meeting. After the AGM business, these will be read out so that members and visitors can reminisce.

Website [www.rshg.org.uk](http://www.rshg.org.uk) © Ryde Social Heritage Group 2018 All rights reserved