



# RYDE SOCIAL HERITAGE GROUP

## Beyond the Graves

Volume 15: Number 1: January 2020

### WINTER IN RYDE

**The Penny Illustrated 22 January 1881** Ryde was visited by a terrific storm on Monday and Tuesday (17th & 18th January 1881) accompanied by snow. Two large colliers, the Havelock and the John Ward, were blown against the new iron railway pier, which had just been erected and carried away about 200ft of that structure. Business was entirely suspended, and the streets were filled with snow-banks.



*The North wind doth blow,  
And we shall have snow,  
What will poor Robin do then?  
Poor thing,  
He'll sit in the barn,  
And keep himself warm,  
And hide his head  
under his wing,  
Poor thing.*



An anonymous poem & a photo of the resident robin in West Street Cemetery by Colin Hunt

How did we cope with the winter weather? There was no central heating, the downstairs rooms were heated by coal fires, or later by electric or gas fires. Upstairs there was no heating so during the winter it was common for ice to form on the inside of the windows! Night-time routine was a warming pan or hot water bottles in the beds and undressing downstairs in the warm. Every home had a coal hole or bunker. The coal men carried the bags of coal to the coal bunker. Coal scuttles were used to carry the coal into the house. There were no tumble driers so in the winter or when it rained, clothes were hung on clothes horses or airers around the fire or in the kitchen where it was warm. On other days clothes were pegged out to dry on clothes lines with wooden pegs

Stormy seas off Ryde Pier  
Illustrated London News  
After the Snowstorm  
Postcard Roy Brinton Collection

#### **IW Observer 3 October 1868**

**The Storm** – On Saturday evening last the plate glass in the door of the Clarendon Club was shattered to atoms; the glass was three-eighths of an inch thick. The accident occurred between 7 and 8 o'clock, when the storm was at its height, but whether from the effects of lightening or the violence of the wind is not known.





## *The North wind doth blow:*

### **IW Observer 21 November 1914**

Some considerable damage was done to the sea wall and promenade on Sunday morning by the heavy seas, with the result that some thirty yards or so gave way. The work of repairing the damage was started as soon as the tide would permit.

Damage to the sea wall was a regular occurrence, as seen on another occasion in this postcard of December 1909 - Paul Kingswell Collection

### **IW Observer 23 January 1869**

Apley Wall – The storms of this winter has committed sad havoc on the walls leading to Spring Vale, which it will cost a very considerable sum to repair.



## *And we shall have snow:*

All Saints Church in Ryde after the snow of January 1881. Building had begun in 1869 to Sir George Gilbert Scott's design, but the spire was not erected until 1882, costing £3,037.

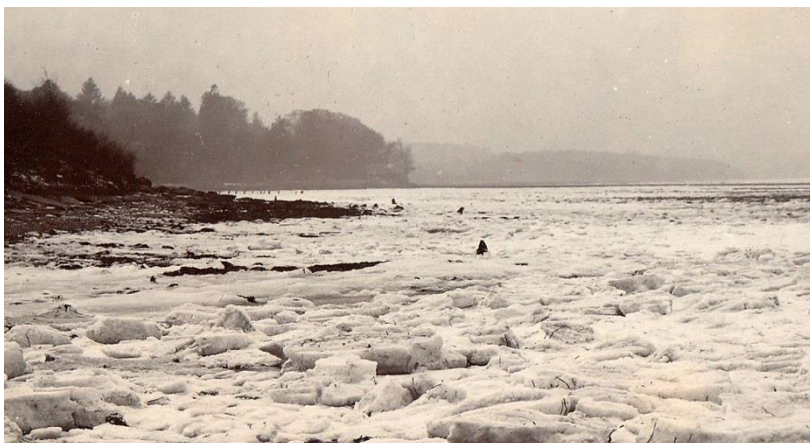
Roy Brinton Collection



After the snow storm of 29 December 1908 clearing up begins in Lower St Thomas' Street. A glimpse of the RVYC [probably better known as the Prince Consort] behind the man. The central buildings now demolished. Postcard Richard Hawes Collection.



Player's Beach, near Ryde, with the sea frozen over, January 1907. Postcard Ian Murray Collection



### **IW Observer 26 January 1907**

**Skating in the District** – The sudden advent of "King Frost" during Wednesday night raised hopes of the possibility of skating. Some of the well-known ponds in the district were frozen ... no-one was allowed on the canoe lake, the Corporation evidently expecting a prolonged continuation of the cold snap in which the pastime could be indulged in without getting wet.



*He'll sit in the barn, and keep himself warm.*

**IW Observer 14 December 1867**

Loss of a Ryde Collier - We deeply regret to hear that no tidings whatever has been received of the missing collier, the *Jane*, the property of Mr. James Fairall, coal merchant, of Ryde. It is feared she had gone down with all hands, the crew consisting of five persons. She was last seen in Yarmouth Roads in a snow storm, nearly a fortnight ago. It appears the vessel was uninsured.

**W. & J. WOODS,**  
26 and 27, CROSS STREET, RYDE.  
Established at the beginning of last Century.  
Hardware Merchants,  
Manufacturing and Furnishing Ironmongers,  
Sanitarians, Electricians,  
Iron and Tin-Plate Workers, Copper-smiths.  
Experts in Hot Water Heating and Ventilation.

**AUTUMN  
AND  
WINTER REQUISITES.**

In their IW Observer Advert, 17 November 1906, W & J Woods offered probably every type of stove available – Slow Combustion Stoves; Hot Air Stoves; Tortoise Stoves; Gas and Oil Stoves. They advised that horticultural and domestic hot water apparatus should be overhauled before winter sets in.

Telephone: 471 RYDE.

**ELLIS PALMER,**  
IRONMONGER, & SPORTS DEALER.  
CUTLER, &

THE  
**POLLITT OIL HEATER**  
Made by Englishmen in England.

Absolutely Safe.  
Economical.  
Smokeless.

Something altogether New!  
Wick Tube independent of Reservoir.  
We shall be very pleased to show and explain it to you.



THE MOST POWERFUL OIL HEATER EVER PRODUCED.

SPECIAL KEROSENE OIL for the above, 10d. per gallon. Reductions for 10 gallons and upwards.

Above - Ellis Palmer's advert  
IW Observer 20 November 1909

ESTABLISHED OVER HALF A CENTURY. BOT OF TELEPHONE NO 184Y

**T. HARVEY & SON**  
COAL & COKE MERCHANTS AND FORAGE CONTRACTORS.  
WHOLESALE POTATO AND FRUIT IMPORTERS. BANANA MERCHANTS.  
104, MONKTON STREET, RYDE. *Mich 1913*

T. Harvey of 104, Monkton Street, supplied half a ton of coal to the Blake's in March 1913 for 15s, no doubt a regular order.  
Bill Head Hilary Lloyd Collection

**IW Observer 15 November 1873**

**Ryde Relief Society** – Owing to increased cost of coal, last winter was one of much distress: this induced the committee to open their soup kitchen a month earlier than heretofore. The result was that 4,724 quarts of soup and the same number of pounds of bread were issued. 300 blankets with coverlets were loaned out, and 357 sick or infirm were relieved with coal.

Jolliffe's advert IW County Press  
9 November 1933

When Mr C Locke & Miss Frances I. Hall married on 11 May 1910, gifts included a warming pan [which would be heated by filling with hot coals and placed in the bed, a potential fire hazard] Did newlyweds really need a warming pan?

**RYDE GASLIGHT COMPANY**

<p><b>INCANDESCENT GAS GIVES</b> A Beautiful White Light <b>AT ONE QUARTER</b> the cost of the <b>ELECTRIC LIGHT.</b> Incandescent Burners attended to by experienced men, free of charge.</p>	<p><b>WINTER IS COMING!</b> Save COAL AND TROUBLE OF CLEANING GRATES How? BY USING <b>A GAS FIRE!</b> Gas Fires can be hired from 3s. a year, or purchased on the Hire Purchase System, or for Cash.</p>
--	--

All particulars and every information given at  
**THE GAS CO.'S SHOW ROOMS, 178, HIGH STREET, RYDE.**


**COAL!**  
**JOLLIFFE'S**  
SUPPLY  
**THE BEST OF ALL KINDS**  
AT ECONOMIC PRICES.  
**JOLLIFFE BROS., LTD.,**  
24c, Union Street, Ryde.  
Phone 352.

**BRIGHT FROM THE START WITH A NEW GAS FIRE**



**This is the GASMISER**  
Just one of the exciting range of new-look gas fires. With automatic heat-control and double-jet action for maximum comfort at minimum cost. Available in various lustre finishes.  
COSTS £27.17.9 or £30.17.2 with thermostat (Prices include fixing to nearby point)  
**BEAT THE COLD RUSH - BUY YOUR NEW GAS FIRE NOW!**  
SOUTHERNGAS

## Coughs and Sneezes...



**ST. JACOBS OIL**

**THE GREAT REMEDY FOR PAIN,**  
CURES

Rheumatism,  
Neuralgia,  
Backache,  
Swellings,  
Sore Throat,  
Sprains, Sores,  
Why is it

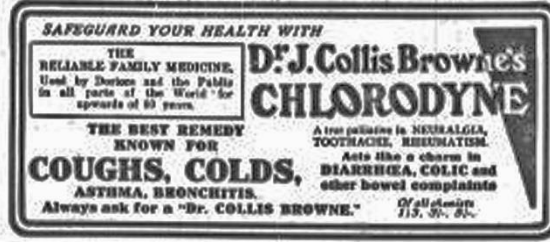
That St. Jacobs Oil always affords instant relief from pains, after all other remedies have signally failed? Simply because it is peculiar to itself wholly unlike another remedy. It possesses great penetrating power, reaching the very seat of the disease. It acts like magic. It conquers pain quickly and surely. It is an outward application, and is used by millions of people.

Price of ST. JACOBS OIL,  
1/1½ & 2/6 per bottle.

No – St. Jacob's Oil was not for the stove – but seemingly a cure for all winter ailments – and more! They advertised in the IW Observer regularly.

Maybe Randall's products had more appeal in their advert in the IW Observer 26 January 1901.

Dr Collis Browne's remedies were also advertised in the IW Observer, this one dated 17 November 1917.



SAFEGUARD YOUR HEALTH WITH

THE RELIABLE FAMILY MEDICINE.  
Used by Doctors and the Public in all parts of the World for upwards of 50 years.

**Dr. J. Collis Browne's CHLORODYNE**

THE BEST REMEDY KNOWN FOR  
**COUGHS, COLDS, ASTHMA, BRONCHITIS.**

A true palliative in NEURALGIA, TOOTHACHE, RHEUMATISM. Acts like a charm in DIARRHOEA, COLIC and other bowel complaints.

Always ask for a "Dr. COLLIS BROWNE."

Of all chemists 1/5, 3/-, 6/-.

## RANDALL'S WINTER SPECIALITIES.

### DELICIOUS NON-ALCOHOLIC WINES AND CORDIALS.

WINES.	MAY BE OBTAINED IN LARGE OR SMALL BOTTLES FROM ALL GROCERS.	Cordials.
GINGER. ORANGE. RAISIN. BLACK CURRANT. PORT. ELDERBERRY.		MIXED SPICE. PEPPERMINT. CLOVE. CHERRY BRANDY. GINGER BRANDY. FETTER.

The Cordials, mixed with hot water, form a most pleasing and wholesome beverage for the cold weather.

**RANDALL AND CO.,**  
Mineral Water Manufacturers, RYDE, I.W.

## IW Times 10 January 1963

I.W. Hospital staff who struggled to get to work during the Arctic-like weather conditions received a public "Thank You". The hospitals have all carried on without a breakdown of any kind.

*A woman's work is never done - despite the weather.*

## IW Observer 3 January 1914

Clothes Drier - Get an old umbrella, take off the cover, and enamel the framework to prevent it rusting. Suspend the frame by the handle from a hook in the ceiling near the range. All small articles can be hung on each rib and dried readily, and when ironing collars, necktie's, etc., they can be aired in the same way. It can be closed up and put out of sight when not in use.

Perhaps a traditional clothes horse would be more practical as featured in this undated Sunlight Soap advert in the Observer.

**CASTLES**

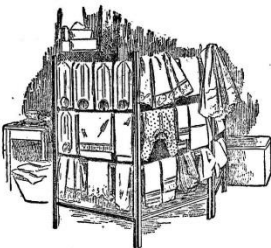
**Eiderdown**

**Recover Service**

*is now in operation*

SAMPLE COVERINGS AND QUOTATIONS  
CAN BE OBTAINED FREE OF CHARGE  
at  
**CASTLES Furnishing Stores**  
141 HIGH STREET, RYDE Tel. 2447  
DEFERRED TERMS ARRANGED

Castles Advert IW Times 12 September 1963 in the days before quilts – remember those blankets?



**A Clothes-horse and a Cab-horse**

are just as unlike one another as **SUNLIGHT SOAP** is unlike ordinary laundry soap.

Sunlight Soap will save half the labour, and in fact does the most of the work. Soiled garments made as white as snow by using **SUNLIGHT SOAP**.

**Why** do not the soap manufacturers who make imitations of the Sunlight Soap imitate other Soaps?

**Because** Sunlight Soap is worth copying, the others are not. Gold is continually counterfeited; brass and tin never.

**Why** do none of these imitations obtain any sale on their own merits?

**Because** they are simply the old adulterated impure soaps trying to obtain a sale by imitating the

**SUNLIGHT SOAP,**

which they resemble about as much as a farthing candle does the glorious orb of day.

**Why** do these adulterated soaps, though alleged to be cheapest, prove the dearest in the end?

**Because**, though they cost little in money, they will cost you much in loss of health and ruined clothes.

**Why** are people deceived into buying them?

**Because** they do not look to see that the registered title "Sunlight" Soap is on the wrapper and the tablets.

## Cheer up, Ladies – Let's go dancing!

### IW Observer 13 December 1913

Advert – Tango, as danced in Paris and London. In four lessons. Classes being formed at moderate prices. Tango Teas, with tuition (by arrangement). Lessons in the Brazilian Mixixe. Miss Turtle, Royal Eagle Hotel. Tel. 416.

**H. PACK & Co.**  
RYDE,  
COMMENCE THEIR ANNUAL  
**WINTER SALE**  
SEASON'S GOODS  
Monday Next.  
*Ladies' and Children's Complete Outfitters.*

January Sales were something to look forward to – Pack's advert IW County Press 30 December 1922



## Do away with the winter blues!

Not everybody did, or even could, leave the town for the winter, so they had to be entertained.

### IW Observer 28 December 1867

Entertainment – At the close of the month a grand amateur theatrical entertainment was given to about 200 of the *elite* of the town and neighbourhood by Gen. Slade and family, as well as a private theatrical entertainment at Southlands, which was numerously attended.

### IW Observer 24 November 1866

Quadrille Society – We are pleased that a few of our spirited young men of Ryde, headed by Mr. Alfred Hughes, have determined to relieve the dullness and monotony of the winter, by forming the above society. We understand the first meeting was very well attended.

## THEATRE ROYAL

RYDE

THURSDAY, January 14th for 3 days at 2, 4.50 and 7.40 p.m.  
IN CINEMASCOPE AND EASTMANCOLOR

Ingrid Bergman      Curt Jurgens

### THE INN OF THE SIXTH HAPPINESS

Last complete programme at 7.35 p.m.

---

SUNDAY, January 17th and All the Week  
Sunday at 5.15 and 8 p.m. Weekdays at 2.50, 5.30 and 8.20 p.m.  
Last complete programme at 7.45 p.m. (Sunday 7.20 p.m.)

The Rank Organisation Presents A Marcel Hellman Production



KENNETH MORE   LAUREN BACALL   HERBERT LOM

### NORTH WEST FRONTIER

A CINEMASCOPE PICTURE IN EASTMAN COLOUR  
ALSO STARRING Wilfrid Hyde WHITE · I. S. JOHAR  
Screenplay by Robin Estridge  
Directed by J. Lee Thompson

Lightbown's of Union Street advertised the last three days of the National Book Sale in the IW Times, 14 January 1960. Dennis Wheatley's 'Saturday with Bricks' 18/- down to 10/6; an Anthology of Women's Institute activities 21/- now also 10/6, or Flowers in Colour, originally 5 gns, a bargain at 50/-. Winter comforts were available from Hansford's so buy your easy chair ready to snuggle down with a good book. Advert IW Observer 17 Nov 1906

### WINTER COMFORTS.

Tel. 0466.

**AN EASY CHAIR.  
A DOWN-QUILT.  
A DRAUGHT SCREEN.**

BUY THESE FROM

**HANSFORDS', Cross Street, RYDE,**

— and —

You get the **Best Value** on the Island.

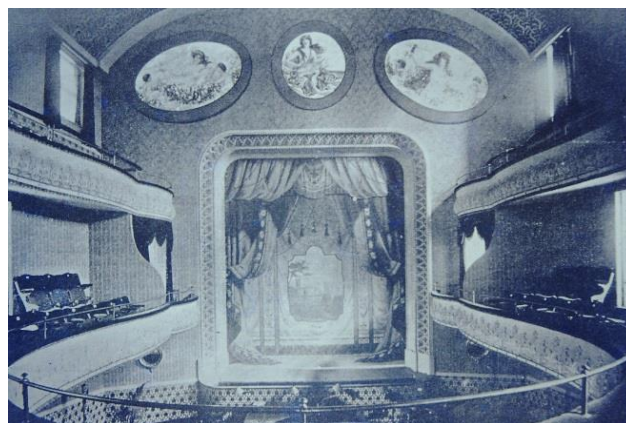
### IW Observer 4 October 1862

Fashionable Intelligence – The Baron and Baroness de Beckman have left Broughton-house, Strand for London; The Dowager Lady Clifford and the Honble. Misses Hewitt left their residence, Yarborough-villa, Pelham-field, on Wednesday last, for the South of France, for the winter; Mr. and Mrs. Robert Burrell have arrived at Gwydyr-house for the winter.

### IW Observer 9 December 1916

Ryde Minstrel Society – This Society gave a matinee performance at the Theatre Royal on Thursday, in aid of the St. Dunstan Home for the Blind, in the presence of a fairly large audience

Interior of the theatre below - RSHG



### IW County Press 9 March 1940


A regimental production of Cinderella was performed by the officers of the IW Rifles at the Theatre Royal, Ryde. The sell-out performance went down a storm and left audiences delighted.

Films to warm you up  
at the Theatre Royal.

IW Times  
14 January 1960

## RYDE SPORTS CLUB

MEMBERS  
HAMPSHIRE COUNTY  
LEAGUE  
Divisions II & III



GROUND:  
PARTLANDS,  
RATCLIFFE AVENUE,  
RYDE.

OFFICIAL PROGRAMME - No. 141


Season 1960-61
Price Threepence

---

Nip in the air?  
Ask for a

## LITTLE BRICKY

Brewed by Brickwoods  
to keep you warm!



### IW Times 28 June 1962

Ryde Sports FC - The 1961-1962 season will be remembered as one of the most disappointing among recent years from a playing standpoint. Only about 20 members turned up to hear their committee's report and find out what went wrong last season.  
[Perhaps the team had too much Little Bricky beer?]



## Winters in the 1960's & 70's

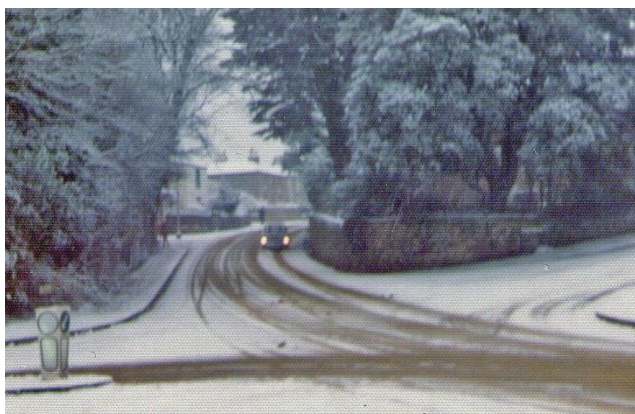
This snowy scene at the Green Street and High Street junction predates the installation of the traffic lights in 1967. The Brewer's Arms on the right probably didn't have many customers that night, it finally closed in 1970. The grocers shop is opposite. [RSHG]



Not exactly the weather – but ....  
Because of the installation of traffic lights at the junction of Ryde High Street with Green Street and St. John's Road, the High Street is to be closed to traffic from one o'clock today.  
IW Times 13 July 1967

IW County Press 13 January 1962

The heaviest snowfall on the Island for four years brought parts of the IW to a complete standstill. A number of roads became impassable, causing many people to walk for miles, as bus services were cancelled. One bus skidded off the road near Ryde, as freezing temperatures caused the snow to turn to ice, although no-one was seriously injured.



IW Times 10 January 1963

Cold Comfort - In the recent bitter weather magistrates sitting at Ryde Town Hall court room have commented about the cold - several times they have conducted cases wearing overcoats and scarves.

In the 1970's a car carefully drives down Upton Road towards the Ashley Road junction, [Photo Dave Bushell] and looking down Queens Road from the Pellhurst Road junction – no traffic lights there either. [Photo Hilary Lloyd]



## *And it wasn't just snow & wind that caused problems...*

IW Times 19 January 1933

**The Island Fog Bound - Traffic with the mainland was interrupted by a heavy fog over the Solent yesterday (Wednesday). The town was without mail from other parts of the country and the morning papers, as, apart from a launch which arrived at the Pier from Portsmouth shortly after 11 a.m., the first boat from the other side did not get in until 1.45 p.m. Many people travelling to the mainland were held up at Ryde, including Earl Jellicoe. At the Ryde Post Office extra hands were needed to deal with the belated mail in addition to the sixteen normally employed on the first delivery, and extra deliveries were made to cope with the delay.**



An earlier postcard of flooding at the Recreation Ground  
Jamie Roberts Collection

IW Times 26 October 1961

Flooded - Sixty miles an hour winds, coupled with a 13ft. 6ins. high tide and pouring rain, flooded many Ryde sea front properties on Tuesday. As usual the Strand and St. Thomas's-street basement properties were badly affected and both corporation men and the fire brigade were busy throughout the day on pumping-out operations.