



# RYDE SOCIAL HERITAGE GROUP

## Beyond the Graves

Volume 16: Number 1: January 2021

## ON THE MOVE

### The Grass Is Always Greener ...

Not many Ryde residents may have been as adventurous as Mr Conduit and answer the call to travel to Australia. A later advert [IW Times 6 June 1912] asks for farm workers or domestic servants, passages from only £2! People were always coming to or leaving the town, just for the season or permanently. Businesses also moved premises within the town. Carriers and removal men were always in demand.



**Hampshire Telegraph 9 November 1870** - On Monday evening a number of Mr. Conduit's friends invited him to a farewell dinner at the York Hotel. After the cloth had been removed Mr. Gabell took the chair, and a convivial evening was passed. Regret was felt at the loss the town would sustain by the departure from among us of Mr. and Mrs. Conduit, and of Mr. Owen Conduit, and good wishes for their prosperity in their new home were expressed. There was a presentation of a purse of gold. Mr. and Mrs. Conduit and family left Ryde on Wednesday, and will sail for Sydney from Milwall in the course of the coming week.



#### IW Observer 21 February 1863

**Removal** - The pillar letter-box, which lately stood near the workshop of Messrs. Dashwood in High Street, has been removed and fixed close to the Star Inn. There is not the least doubt about one being wanted there, but we do think it will be a serious loss to the inhabitants of the upper end of the town to lose theirs in this manner.

Some more unusual items that have moved around the town – the railway engine 'Calbourne' at Fiveways going from the St John's Yard to Newport in 1969 [Roy Brinton Collection].

This Victorian pillar box [still in situ at the Dover St/Melville St junction] would be similar to that which was moved in 1863.

**IW Observer 9 October 1909** - The people at the end of Ryde Pier on Wednesday, were treated to an unusual spectacle of upwards of 100 convicts in the charge of 22 warders, emerge from a train and embark on the steamer for the mainland. They were convicts who are being transferred from Parkhurst to Maidstone in connection with the removal of the Printing Plant.

**IW County Press 1 October 1938** - A party of 80 convicts, the largest batch ever received at Parkhurst jail arrived on the Island. The prisoners travelled from London to Portsmouth by train, crossed over to Ryde in a special steamer, went by train to Newport and completed their journey in motor coaches.

IW Observer 15 February 1868

Mr. and Mrs. E. M. de Bussche have removed from Windsor House to The Lawn, Spencer-road, which they have taken for a term.

We regret to hear that Major-General and Mrs. J. Simmons Smith will leave Marine Villa, St. Thomas's-street, this day (Saturday).

Mr. and Mrs. Gaspard Le Marchant Thomas Le Marchant have removed from the Promontory, Strand, to Lynwood, St. John's Park.

IW Observer 23 April 1870

Lord and Lady W. Graham have left Berwick Lodge, Pelham-field, for London.

Col. Wallace and family have removed from Somerset House to Dean House, Castle-street.

His Royal Highness the Duke of Cambridge, Commander-in-Chief, after visiting the forts, landed at Ryde pier, accompanied by his staff, on the afternoon of Thursday last.

# SHOPS & BUSINESSES

Everything from servants to carpets for your new home

**IW Observer 17 September 1864**

M. Wilkinson, Poulterer, and Register Office for Servants, removed from St. Thomas's Square to No. 143 High-street, Ryde.

**IW Observer 17 September 1864**

Mr. Crisp begs to inform the public the Stamp Office is removed to Marine House, Nelson-street.--- Postage, Receipt, and Bill Stamps can be had at Mr. Marrant's, grocer, Union-street.

**IW Observer 14 November 1863**

John Edmund Scott begs to respectfully inform the Gentry and Inhabitants of Ryde and the Isle of Wight generally that he has removed from Union-street (during the building of New Business Premises) to Arabin Cottage, Castle-street, where orders will be received or may be left at his late premises.



Hill Stores was one shop noted for house furnishings as this advert shows.

Their sales were obviously popular, too, judging by this postcard from Brian Young's collection, originally belonging to his father.

**SPECIAL OFFER AT MUCH UNDER PRESENT VALUE.**

**Seamless Axminster Carpets**

New Designs and Choice Colorings; also—

**Artistic & Durable Linoleums**

A Good Range of Patterns and there is nothing better than good Linoleum for Sitting Rooms, Bedrooms, Kitchens, Corridors, &c., &c.

**Purnell & Purnell, 7 and 8, High Street, Ryde, I.W.**

Purnell's was the place to go to for floor coverings. IW Observer 8 November 1919

Hansford's was the shop for discerning people. The Islander August 1968



The Post Office mentioned below in 1893 was Mellish's.

Their Advert in the IW Times 11 December 1969

**IW Observer 18 February 1893**

The High Street Post Office has been removed from the premises adjoining the Oddfellows Hall, to those hitherto occupied by Mr Munt, draper.

**IW Observer 8 December 1894**

Denny & Co. desire to most heartily thank their numerous patrons for past kind favours, and to inform them that they will shortly remove to their new premises, formerly occupied by Mr Rickard, at the corner of John Street.

**HANSFORDS OF RYDE (Furnishers) LTD.**

*Fine Furniture for discerning people*

We specialise in modern furniture, carpets and fabrics

MAIN AGENTS FOR PARKER KNOLL FURNITURE ON THE ISLAND

OUR PERMANENT ERCOL EXHIBITION IS ALSO WORTH A VISIT

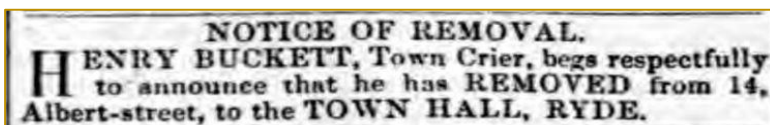
Open until 8 o'clock Friday evenings

HOUSE FURNISHERS  
10-11 CROSS STREET  
RYDE, I.O.W.  
Telephone Ryde 2266

**NOTICE OF REMOVAL.**

**MR GIBBS** presents his compliments to his Dental and Chiropodists Patients, and begs to say that he has removed from 34, Union Street, to St. Helier's, 15, Strand, Ryde, where he continues to attend patients from 10 to 4 o'clock daily, or by appointment.

IW Observer 19 May 1894



IW Observer 5 November 1864



# THE CARRIERS & REMOVAL FIRMS



SOUTH-WESTERN RAILWAY COMPANY'S  
GOODS OFFICE,  
61, UNION STREET,  
RYDE, I.W.

GEORGE OAKLEY,  
AGENT,  
By Special Appointment,  
AND  
GENERAL CARRIER.  
GOODS TO AND FROM LONDON DAILY.  
LARGE COVERED LOCK-UP  
**Furniture Duns,**  
Built expressly for the Removal of Valuable Property from door to door.  
Estimates given on application, and the most moderate charges ensured.

**HOUSEHOLD REMOVALS.**—The partnership formerly existing between Messrs Gawn and Riddick having been dissolved, Mr Gawn is now carrying on the business of a carrier at 81, Union-street, Ryde, and will undertake all kinds of household removals. Mr Gawn has had many years' experience of this work, and has received numerous testimonials as to the care and ability with which he has personally conducted removals to all parts of England, copies of which will be furnished on application.—Advt.

Gawns were eventually to merge with Curtiss.  
Photo of their van.  
[Roy Brinton Collection]

Curtiss & other adverts from directories & guides  
[Ann Barrett]

GEO. PESCOTT AND SON,  
GENERAL CARRIERS,  
AGENTS BY APPOINTMENT  
TO  
LONDON, BRIGHTON, AND SOUTH COAST  
RAILWAY FOR PORTSEA & THE ISLE OF WIGHT.  
Goods daily to and from George Yard, Aldersbury, and King's Head Inn, through Company's Office, Dunn Street, at 4 p.m.; also, White Horse Cellar, Fleetville; and Railway Station, Bricklayers' Arms, Old Kent Road, London.  
In order to ensure punctuality, G. P. & Son recommend their customers to avail themselves of one of the above Offices.  
**VANS TO VENTNOR.**  
Through Basing, Tadworth, Sharncliffe, and Bournemouth, every afternoon, at 3 o'clock, from their Office, George Street, Ryde; returning from Basing's Office, Ventnor, at 11.15 a.m. for Ryde.  
**GOODS TO AND FROM PORTSMOUTH AND RYDE,**  
BY STEAM PACKET COMPANY'S TOW BOATS.  
**VANS FOR REMOVAL OF FURNITURE.**  
GEORGE STREET, RYDE; BRANT'S OFFICE, VENTNOR; CROSS STREET, PORTSEA.

IW Observer 3 June 1882

Curtiss Advert - Ryde & Seaview Guide 1935

**RELIABLE REMOVALS.**  **SAFE STORAGE.**  
BY APPOINTMENT.

LONDON :  
28 Farringdon St., E.C. 4.  
SOUTHSEA :  
9 Clarendon Rd.  
SOUTHAMPTON :  
28 Queen's Terrace.  
RYDE :  
73 Union Street.

For the most expert service at the most economical price consult  
**CURTISS & SONS, LTD.**  
'Phone: RYDE 23.

George Curtiss died 6 October 1892, aged 71. He had been the founder of the business. Whilst he had a rather terse manner serving on Ryde Town Council, he was a kind-hearted man. The IW Observer, 6 May 1882, reported on how he had rescued an unwanted retriever dog, about to be drowned, and took him home. Named Brake, the dog followed Curtiss everywhere and became well-known. Curtiss had a collection box made, attached to Brake's collar. The money collected went to the widows and orphans fund. The dog was only allowed to wear the box for 3 hours a day. [Various IW Observer reports]

**CURTISS & SONS,**  
LIMITED  
Agents to the L.B. & S.C. and M.R. Ry. Co's  
**Furniture Removed and Warehoused**  
Baggage, Merchandise, Parcels, &c.,  
at Lowest Rates.  
Officers' Baggage, Furniture, Plate, etc.  
Warehoused or Removed to any part.  
Estimates free. Telegrams—Curtiss Ryde. Tel. No. 23  
**1, ESPLANADE, RYDE.**  
28 Farringdon Street, London E.C. Bramley Road, Notting Hill, London W. Pearl Buildings, Portsmouth Royal Pantechnicon, Portsmouth. Also at Southampton, Plymouth, Devonport, Chatham, Sheerness and Bournemouth

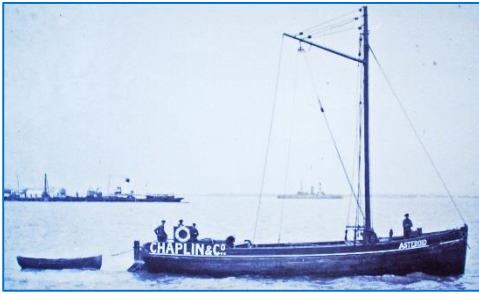
**CURTISS & SONS LTD**  
**REMOVALS & STORAGE**  
Daily Cargo Service to and from the Mainland.  
Motor Deliveries Daily to all Island Towns.  
**73 UNION STREET, RYDE**  
Phone 2342.  
Estimates and Advice Free.  
**Also Portsmouth, London, & Branches**

Curtiss & Sons kept going throughout the war years, their adverts from, far left, IW Times 23 May 1918 and left IW County Press September 1940. Right an advert from the IW Times 22 August 1963.

MAY WE QUOTE YOU?  
**REMOVALS**  
**CURTISS**  
WAREHOUSING  
Tel. 2342  
73 Union St., Ryde, I.W.



**CHAPLIN & CO.,**  
(WILLIAM E. CHAPLIN)  
**CARRIERS AND GENERAL FORWARDING AGENTS.**  
(AGENTS TO THE LONDON & SOUTH WESTERN RAILWAY Co.)  
**HOUSEHOLD FURNITURE, PICTURES, &c., WAREHOUSED OR REMOVED.**



**IW Observer 18 October 1913**

On Monday evening a horse, attached to a trolley, the property of Chaplin & Co., bolted and crashed into Mr. C. J. De Launay's shop window, breaking two panes of glass, the woodwork of the shop door, and splitting the counter inside.



Chaplins were a long established firm, with premises on the corner of George Street and the Esplanade. They clearly expected business from London, with an office at the 'Swan with Two Necks'. They also had their own boats.

**Chaplins bill heading RSHG**  
**Photograph Roy Brinton Collection.**  
**Advert IW Observer 30 March 1889**  
**Detail of their premises from a postcard RSHG**

**IW County Press 26 December 1931**

The death took place last week of Mr John Henry Linnington, of 'Urania', Prince-street, who was 67 years of age. He was a very familiar figure in the town and he held the respect of all who were acquainted with him. For many years he was in the employ of Messrs. Chaplin as a boatman. He retired from their service two years ago.

**CHAPLIN & CO.**  
AGENTS LONDON AND SOUTH WESTERN RAILWAY.

**HOUSEHOLD REMOVALS,**  
 IN LARGE LOCK VANS, SPECIALLY CON-  
 STRUCTED FOR THE SEA PASSAGE, ROAD,  
 OR RAIL,  
**TO AND FROM THE ISLE OF WIGHT,**  
 AND ALL PARTS OF THE KINGDOM AND THE CONTINENT.

The Vans of Chaplin & Co. are the **LARGEST** in the District, and the **MOST SUITABLE** for Removing Valuable Property to and from the Isle of Wight.

Large numbers of Testimonials can be seen at the Chief Offices, or on application to the Manager at Ryde.

Estimates Free on application at the Chief Offices—  
 "SWAN WITH TWO NECKS," GRESHAM STREET, LONDON  
 Or at their Offices in Ryde, Sandown, Shanklin, and Ventnor.

**IW County Press 31 January 1914 - Carriers Dinner** – The sixth annual dinner of the Joint Railway Company and the Ryde carriers was held at the Salisbury Restaurant on Thursday of last week, Mr Satchell being in the chair. A capital repast was provided by Host Godfrey. After the loyal toast had been loyally and musically honoured, the company enjoyed the songs and other musical items. Mr G H French (Joint Railway superintendent) took the chair, and in replying to the toast of his health, said he was gratified to see such a number present. The secretary (Mr Bourn) was thanked for having made the arrangements for such a successful evening.

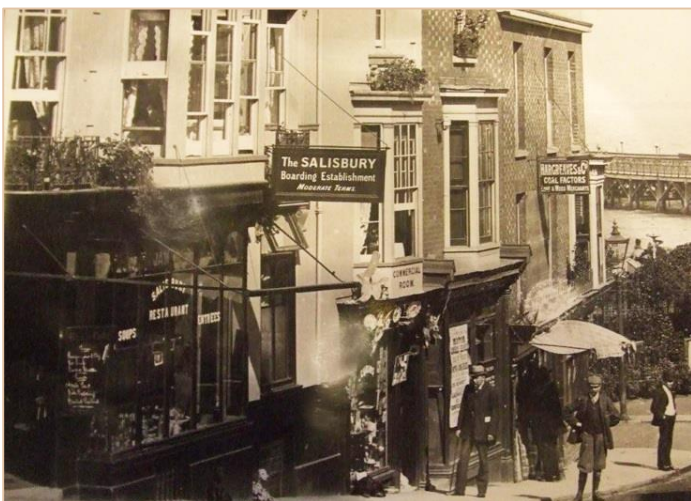
## MORE EMIGRATION

**IW Observer 9 March 1912**

Off to Canada - A smoking concert arranged for the purpose of saying farewell to Mr F Grinham and Mr T Ibbotson of the firm of Messrs W H Smith and Son, who are leaving shortly for Canada, was held at Sivier's Hotel, on Thursday evening. Mr Andrews the local manager presented Grinham and Ibbotson with a purse of money subscribed by the employees and a number of customers.

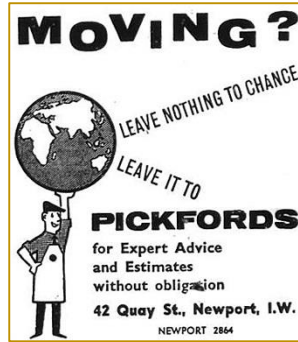
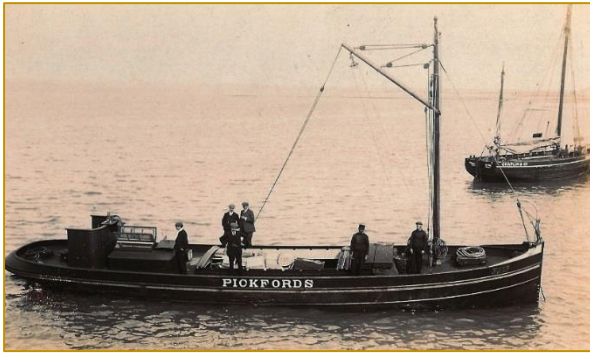
**IW Observer 8 February 1913**

Exodus to Canada - Judging by the indications, emigration to Canada will be unusually heavy this year. Many of the big liners have already had all their third-class accommodation booked up for some considerable time ahead, each day brings fresh applications.



Detail from a postcard showing the Salisbury Hotel in Union Street. RSHG





Pickfords Cargo Boat  
Roy Brinton Collection

Advert IW Times 6 March 1969

### IW County Press 3 May 1913

Immigration agents Pickfords, which had offices in all the Island's principal towns, was inviting Islanders to go on a free trip to Canada – funded by the Canadian Government – as a way of promoting guaranteed employment opportunities and the possibility of permanent residence.



Harold Percy Dibbens was born in Ryde. He was head of the firm of E. Dibbens when he died aged 71, in 1977. Kelly's Directory of 1927 listed Dibbens Furniture Removers at 93 Monkton Street. Their store was in the former Baptist chapel. There was a disastrous fire in February 1986, when four firemen were injured. It was estimated that the contents of about 20 homes were destroyed. Norman Dibbens said '*Its shattering, but we have had offers of help from other firms*'. From the IW County Press report 14 February 1986.

Today's modern vehicle [Dibbens website] certainly contrasts with Gawn's horse drawn van.

Dibbens Advert IW County Press 26 September 1964. Photographs RSHG.



Luckily Dibbens were insured. Agents Morrants in Lind Street seemed to cover every eventuality – from plate glass to domestic servants.

IW Observer 26 January 1918



St Vincent's was a house owned by the Brigstocke family, although they seldom, if ever, lived in it themselves. Like many other properties it would have been available for rent, whether short term or for the whole season.

More from the IW Observer [29 July 1882] Not only did they publish a weekly Fashionable List they also published the comings and goings from the local hotels. Some people even just moved from one house in the town to another.

Lord Clarence Paget has taken Rosemount.  
Mr T. C. Garth has taken Althorpe House.  
Mr Herbert Nicholson has taken Puckpool House.  
Mr J. Dunn Gardner has taken Berwick Lodge.  
Mons and Mdme de Choiseul have removed from Elvington House to Saxonbury Lodge.  
Capt Cosby has taken Borneo Villa for the season.  
Capt and Mrs Boger and family have returned to their residence, Elvington House.



## MOVING IN

New properties have been built over the years for people moving to Ryde.

Davron Constructions Ltd., of 81, George Street built the 'Davron Estate' at Haylands circa 1963/4. Purchasers chose their plot from a plan. They advertised for bricklayers in the IW County Press, as well as for buyers the following year, 27 November 1965. A three-bedroom property cost £3,150. Early application was advised.



**BRICKLAYERS** required immediately for bonus work on housing site at Ryde.—Davron Constructions, Ltd., 81 George Street, Ryde.

2020 photograph Colin Hunt

Plan Ann Barrett Collection

Advert IW County Press 26 September 1964

IW Observer 20 November 1920

### MAINLAND COMMUNICATION.

#### Proposed Aerial Railway

A scheme has been submitted by a London firm of engineers for crossing from Portsmouth to Ryde, by means of a novel aerial railway.

In a letter read at Thursday's meeting of the Island Chamber of Commerce, the firm proposed to build an airship which would run on a cable and provide its own motor power. It was claimed that the scheme would give cheaper communication between the Isle of Wight and the mainland than travellers can obtain at present.



### IW Times 2 September 1965

The Women's Voluntary Service are moving to their new premises in Newport Street, Ryde, on September 16. After that date all their activities will be under one roof: Offices, Welfare foods, Darby and Joan Club, Luncheon Club, and Clothing Store for those in need; also a chiroprapist.

## THE ULTIMATE HOUSE MOVE

This unusual property, called 'The Gates of St John', was built in around 1912 for Madame Emily Madelina Du Pre, in Riboleau Street. She may just have used it as a 'second home'. Being quite eccentric, she was convinced there was going to be another Great Flood, so had a lifeboat house, complete with lifeboat, built opposite. However, she didn't need to use it and died in 1924 in London. Although the house sustained minor damage in WW2, you will not see it today in Ryde. The IW Times, 16 Dec 1948, reported it was being dismantled piece by piece, each being code marked in blue paint to be rebuilt some 210 miles away near Truro at the wish of the then owner Mrs Elizabeth Lock. [Photographs Roy Brinton Collection]

