



RYDE SOCIAL HERITAGE GROUP

Beyond the Graves

Volume 16: Number 4: October 2021

THE MUSIC SCENE IN RYDE



Music is with us from a very young age, from nursery rhymes, [although in New York in 1901 a less scary version of this rhyme ended with 'When the bough bends it never can fall, Safe is the baby, bough, cradle and all.'] through to our teenage years and beyond.

*Hush-a-bye baby on the tree top,
When the wind blows, the cradle will rock;
When the bough breaks the cradle will fall,
Down will come baby, bough, cradle and all.*

Hampshire Telegraph 30 August 1813

Mr Smith's Musical Family have been performing last week at the Theatre, Ryde, where the Nobility, Gentry, and inhabitants received a most charming treat from the performers of those unrivalled children.

Hampshire Telegraph 3 July 1815

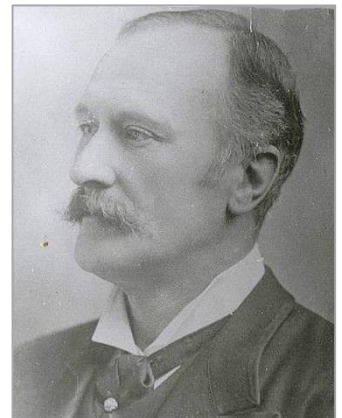
The new Pier is become the evening promenade of crowds of fashionables, who afterwards resort to the Library, where the musical performances steal the hours away, often until nearly midnight.

IW Observer 11 March 1911

Miss Hazel Grey will be the vocalist at the Popular Concert on Monday. One of her songs will be a new work by Stephen Adams "Love Eternal," in which she will be accompanied by the composer.

IW Observer 6 January 1912

Popular Concert - Miss Mabel Manson will sing on Monday next Stephen Adams new song "Silver Moon" accompanied by the composer. Miss Manson is the New Zealand soprano and is a great favourite on the concert platform



The genteel Edwardian audiences for composer Stephen Adams [real name Michael Maybrick, of Ryde, portrait above] or Madame Ritta's young ladies [advert below] would have had quite a shock if watching Neon Rainbow at Woodside in 1974 - both from the music and the outfits.

[Photo Dave Bushell – see more later in Magazine]

BANJO LESSONS.

LESSONS GIVEN on the BANJO by MR. JOHN DOUGLAS, Banjo Soloist, in all styles of playing, from music. Ladies and Gentlemen attended at their own residences; at Mr Turtle's, Music Stores, Union Street; or at Mr. Douglas's private residence, Clevehurst, 32, Monkton Street, Ryde.

Advert IW Observer 3 October 1896

MADAME RITTA respectfully informs the inhabitants of Ryde that she receives Pupils (ladies only) at her residence, or visits them if desired. SINGING (English or Italian) in all its branches; also the PIANOFORTE. To ladies desirous of being introduced into the profession, Madame RITTA offers a thorough education, on most advantageous terms. LESSONS, singly or by the week, month, or term.

Seaton Lodge, Queen's-road, Ryde, I.W.

IW Observer 26 October 1901

Miss Kate Spanner gives lessons on the pianoforte and theory of music at her own or pupils' residences. Address 24 George Street, Ryde. At Homes and Matinees attended.

Hampshire Telegraph 10 July 1815

Much novelty and attraction has been produced in the course of the last week by the performance at the Library of Mr Topliff, of London, on the Piano-Forte and Musical Glasses; which (as his vocal powers are of a very respectable order) he accompanies with his voice.

Hampshire Telegraph 30 October 1820

The Spanish gentleman whose Performance on the Guitar gave such satisfaction to a most respectable audience in Portsmouth, on Wednesday last, respectfully announces to the Ladies and Gentlemen, and Visitors of Ryde, that he will give a Miscellaneous Concert on the Spanish Guitar solely at the Library, on Tuesday evening next, October 31, at half-past seven o'clock. – Tickets, 4s each, to be had at the Library.

IW Observer 10 March 1860

On Friday last a band of itinerant musicians entered Ryde and played some choice airs in a style far superior to that generally attending street music. They left on Monday, receiving, no doubt, but little support at this empty season of the town.

IW Observer 12 May 1860

Band A La Picco - In the early part of the past week a band of orphan boys, from some institution in Deptford, entered the town and played several airs on common tin whistle-pipes in a very creditable manner, to the great amusement of the inhabitants who chanced to hear them.

IW Observer 27 April 1889

On Easter Monday, for the first time, the members of the Town Band appeared in uniform – a dark tunic braided with bright yellow. Their smart appearance and capital music attracted a great deal of attention.

The Medina Marching Band at the 'Party on the Pier' in 2011.
[Photo RSHG]

Marian Feben, born at Ryde in 1896, came to be regarded as one of the principal musicians in the community. She founded the Ryde School of Music, from where many choirs and an operatic society were formed. Under her direction, concerts and operatic performances were given in aid of local charities and many of her pupils were successful at musical festivals.

She actively supported the Island Musical Festival and the adjudicators praised her skills with the baton and enthusiasm for the advancement of music. She gave devoted service to the School of Music Choral Society and the 1st Ryde Rangers until her death in 1937.



RYDE PHILHARMONIC SOCIETY

TO-DAY (Thursday)

at 8 p.m.

TOWN HALL.

"BON-BON SUITE"

by Coleridge Taylor, with solos by

Mr. Harold Williams
The Famous Baritone.

"BALLAD OF HAMPSTEAD HEATH"

by Thomas Wood

and Miscellaneous Programme including

"LADY RADNOR SUITE"

for Orchestra by Parry,

and Solos by

Mr. Harold Williams

Chorus and Orchestra of over 100 members

Hon. Accompanist:

Miss Marguerite Watts.

Hon. Organist: **Mr. E. A. English**
(Mus. Bac. Oxon, F.R.C.O.).

Hon. Conductor: **Mr. O. E. Weare**,
L.R.A.M., F.R.C.O.

Admission (including tax): Numbered and Reserved, 3/6; Unreserved 2/6 and 1/3.
Plan and tickets at Messrs. Teague, Union Street.

Miss H. E. A. Anderson, Hon. Sec.

IW County Press, 20 May 1950, reported on the Musical Festival held in Ryde, over several days in different venues including Ryde School, the Pavilion and the Royal York Hotel. Over 4,000 competitors from the Island and the mainland took part. Michael Wallis, aged 18 of Ryde, won the piano class. David Yelland, also of Ryde, put in a spirited performance to win the violin solo class. Praise was given to the organisers, including the Hon. Secretary, Captain A G Grist of Ryde.

IW County Press 12 July 1985

The Island's International Song Contest attracted more than 400 entries from all over the world and was set to be held near Ryde's Tesco superstore. Initial plans were for the week-long contest to be held in Sandown, but the idea had fallen through. News that the Sealink-sponsored event was to be held in Ryde was welcomed by members of the IW Tourist Board, because of its parking facilities.



An advert for one of the many music events held at Ryde Town Hall.

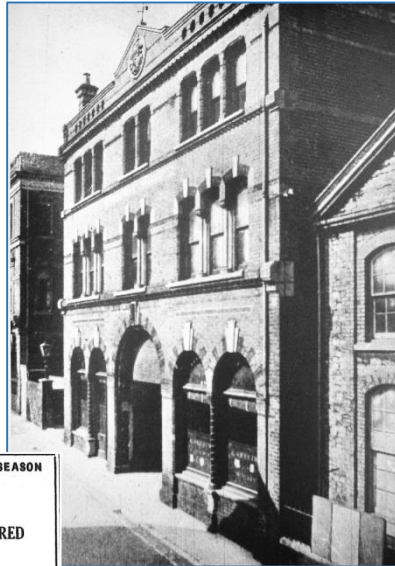
IW Times 21 April 1932

Town Hall photo Roy Brinton Collection



Sailing as a member of the ship's orchestra on the Union Castle liner SS Capetown Castle, bound for South Africa on December 29th, is the popular local musician, Mr "Jimmy" Luff, of Valetta, Great Preston Road, Ryde, and the best wishes of his many admirers will go with him on the voyage. For the past four seasons "Jimmy" with his light and well balanced orchestra, has delighted thousands of people, both visitors and residents alike, with his concerts in the Eastern Gardens and Pavilion, and his popular "request" programmes during the summer months have given enjoyment to many.

[Reported in the IW Times 23 December 1948 – Photo RSHG]



Ryde Pavilion
Postcard
Ann Barrett



THE FINEST MUSICAL TREAT OF THE SEASON
at the
COMMODORE, RYDE
JUNE 8th-11th

CARMEN With Janet Howe, Frank Sale, George Hancock, Alison Bromley.	THE BARTERED BRIDE With Nancy Bateman, Arthur Servent, Evan Ellis, Edmond Donlevy.
--	---

Monday, Wednesday, Friday, June 8th, 9th, at 7.30 p.m.; Saturday June 10th, at 2.30 p.m.

Tuesday, Thursday, Saturday, June 8th, 9th, 10th, at 7.30 p.m.; Wednesday June 7th, at 2.30 (school-children).

BALLET, FULL CHORUS,
and
THE LONDON LITTLE SYMPHONY ORCHESTRA.
Conductor: Victor Fleming.

PRICES: 5/6, 4/6, 3/6 (res.); 2/6 (sures). Reduced for children.
Late Buses and Trains to all Parts of the Island.

Also— GRAND ORCHESTRAL CONCERT
on SUNDAY JUNE 11th, at 2.30 p.m.

—G.O.—
This space kindly given by Young's, Radio Specialists, Ryde.

Advert for the Lulu concert,
19 July 1964, tickets were
priced from 5/- to 15/-.

Three 1960's programmes
for acts at the Commodore
Hilary Lloyd

COMMODORE **ON THE STAGE**
Manager: T. G. GOW **RYDE** Phone: 2616

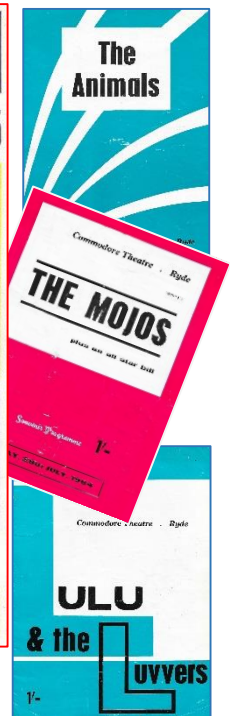
TWO SHOWS SUNDAY ONLY 19th JULY ★ 6-15 & 8-45

MIKE SARNE	LULU AND THE LUVVERS
-------------------	-----------------------------

THE YARDBIRDS	THE LEROYS	VINCE EAGER
THE WILD ONES	AL BRANDON	

BOX OFFICE OPEN DAILY
PRICES OF ADMISSION: 15/- 12/6 10/6 7/6 5/-

SUNDAY, 26th JULY • THE MOJOS • HEINZ • JESS CONRAD
AND BIG COMPANY



'Carmen' Advert
IW County Press 20 May
1950
Present day photograph
RSHG
Building previously on site
Roy Brinton Collection



Born in Newport, 12 August 1941, the former Terence Perkins was employed as a milkman before becoming a professional singer, and was known to many as the 'Singing Milkman'. His manager, Bunny Lewis gave him the name Craig Douglas after seeing the name outside a house in Scotland. Douglas said there were a number of Terrys around at the time but not many Craigs.

He was voted 'Best New Singer' in 1959 in the British music magazine, NME. He had nine Top 40 UK singles. His version of 'Only Sixteen' going to number one in 1959. It was recorded at EMI's Abbey Road studios, with whistling by Mike Sammes.

In 1961 Douglas entered the 'A Song for Europe' contest with his song 'The Girl Next Door' but did not do well. He topped the bill on the Beatles' first major stage show, although their emergence ultimately spelt the end of his chart career. His final chart entry came in February 1963, when "Town Crier" only reached no 36.

One of his record covers, left.

A 1940's example of a 2-volt accumulator which were used in wireless sets to heat the valves. One would be taken to the local garage, hardware merchant or cycle shop for recharging, while the spare was in use.



YOUR ACCUMULATOR

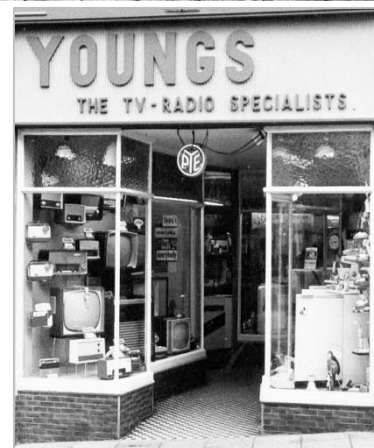
If you leave your accumulator with us for charging it will get a charge the "Westinghouse Way" at the correct rate giving more hours use per charge and longer accumulator life. Bring your accumulator to us next time and see how much longer it lasts the "Westinghouse Way."

YOUNG'S THE RADIO SPECIALIST,
HIGH STREET, RYDE. 'Phone 2489.
Also at Newport and Cowes.

Advert 23 November 1944



Images of Young's in the High Street in the 1930's and 1950's and Teagues shop front.
Brian Young



Pianos, Organs, Player-Pianos, Gramophones.

THE PLACE FOR QUALITY IS AT

TEAGUE'S, 69 Union Street, RYDE.

SECOND-HAND PIANOS from £9.

The Largest and Best Selected Stock in the Island.

AGENTS FOR
"HIS MASTER'S VOICE" Machines and Records.

Every Instrument Guaranteed.

Tel. 157y.

Mr Teague, in partnership with a Winchester colleague, founded the business in 1855, although at a different address in Union Street, before moving to No 69.

Teague's claimed the distinction of being one of the country's oldest record dealers, and had watched the industry grow from the days of cumbersome cabinets bearing huge trumpet-like attachments, to the sleek high fidelity stereo phonic sound units, before they finally closed.

Pianos

AT

Wholesale Prices.

Sent on Approval Without Charge.

Godfrey's IRON FRAME PIANOS

From our Factory to Purchaser FROM

19 gns. 10/6 mth. Cash. Hire System. Brilliant Tone. Perfect Touch. Elegant Case.

Godfrey & Co., LTD.
61 Union St., Ryde

W. TEAGUE & CO., Ltd.

The Island Music Warehouse,
69 UNION STREET, RYDE.

Sole Agents for the Famous George Rogers Piano. Recommended by all the leading Musicians of the Country.

56 Guineas.



Accredited Dealers for H. M. V. Columbia Radio, Radio Gramophones & Gramophones. Marconi Wireless Super Het (All Mains) From £15 15s.

EXPERT TUNERS AND REGULATORS.

Established 1855.

Phone : Ryde 223.

Godfrey's Advert

IW Observer 4 October 1902.

Clarke's Advert

IW Times 8 November 1962

Teagues adverts

IW County Press 31 January 1914 [top] & January 1934 [below]

For **RADIO and TV** SERVICE

Something Wrong ?
LET US HELP YOU
Write, call or Phone Ryde 2541 for PROMPT EXPERT SERVICE

CLARKS
25 HIGH STREET, RYDE - Tel. Ryde 2541

Some record stores, including Teagues in Union Street had listening booths, rather like a confessional box, so buyers could listen to a record before deciding on a purchase.



The first Dansette record player was manufactured in 1952, with at least a million sold by the end of the 1960's. Teenagers would take their Dansette players to and from parties to listen to artists such as Cliff Richard, The Shadows, and The Beatles.





I left School in 1964 and started with school mates in a band in Ryde called the Breakers. We had our first gig at St. Michael's Church Hall Concert in 1964. We had another regular gig at the Flamingo Club Night club in the basement of the Arcade in Union Street. This was a seedy Club and we were only 17yrs old. It stayed open till 1.00 am with gambling and gaming tables in the cellar.

We had our first season at Warner's Holiday Camp at Woodside Bay in 1965 and played at the Hotel Ryde Castle in the summer of 1965. During 1966 we played at the Disco Blue Club at Star Street Ryde, the Island's first Disco above the Commodore Theatre.

During 1966 I was headhunted at the Hotel Ryde Castle by the fabulous The Knights the second most popular band on the island only to the Cherokees. With The Knights we performed at the Babalu night club at Ryde Airport, and the Oasis Ballroom on Ryde Esplanade.

We had a charity night during the late sixties, organized by a local Island resident and the star was Marc Bolan of Tyrannosaurus Rex, 900 people attended that night when we normally had about 200.

I rejoined the Breakers who were then renamed Neon Rainbow performing at Dinner Dances all the way through the 1970's. We also played at the Holiday Camps as the guest band every week including St. Clare Ryde and had a couple of seasons at the Ponda Rosa.

During the 1970's I also worked for Tom Taylors Entertainment agency. They sent me to the Towers Holiday Camp at Thorness Bay with my trio to back a comedian and a female striptease artist. Unfortunately, I was playing the piano with my back facing the audience and concentrating reading the music so missed the action and saw nothing.



Sounds of the Sixties

I'm Sorry – Brenda Lee (1960)
 Blue Moon – The Marcels (1961)
 Love Me Do – The Beatles (1962)
 Ring of Fire – Johnny Cash (1963)
 Twist and Shout – Chubby Checker (1964)
 Sounds of Silence – Simon & Garfunkel (1965)
 Wild Thing – The Troggs (1966)
 Happy Together – The Turtles (1967)
 Wonderful World – Louis Armstrong (1968)
 Sweet Caroline – Neil Diamond (1969)

A big thank you to Dave Bushell for writing his memories [with only room for some highlights here] which can be seen in full in the RSHG archive, and, together with his photographs, will form one of the Group's displays.

Neon Rainbow at the Ponda Rosa in the mid-1970's.

Dave broadcasting as one of the volunteers on Angel Radio at their Cowes studio in 2014.

The Tom Taylor Trio at Shanklin, 1970's

The Knights at the Winter Gardens, Ventnor, 1960's

Photographs kindly supplied by Dave Bushell

1951 KELLYS DIRECTORY Ryde High Street
 16 Young's The Radio Specialists.
 25 Grace Jsph R. & Co Radio Engineers.
 90 Western G. E. C. Radio Engineer.
 180 & 180a Holbrooke, Radio dealers

IW Times 2 July 1964

The twang of guitars heralded the "Ryde sound" on Saturday afternoon as "The Interns," Ryde School's own purveyors of pop music, went into a "twist and Shake" routine to give the audience a swinging welcome to All Saints' Church annual summer fete.

IW County Press 12 June 1965

Island Folk Song Club – Folk singing, the new trend in popular music was "launched" in the Island, when the Island Folk Song Club held their first night at the Redan, Ryde, on Friday week. The club was formed by five young people, Liz Davies-Eales, John Underwood, Roy Middlebrook, Cliff Maidment and Brian Jones, who have formed a folk singing group, the Overners. This group is resident at the club and the object is to provide all types of folk song entertainment, giving local singers and musicians a chance to show their talents and also bring artists from London. The resident group also have plans to entertain at village shows and fetes.



Photo of The Redan, Union Street.
Kevin Mitchell

GODFREY & Co., Ltd.

Pianoforte & Gramophone
Dealers

23, UNION STREET,
RYDE, I.W.

IW Times 27 November 1952

The first night of the newly formed Island Jazz Club attracted a crowd of 160 people to the London Hotel on Thursday. Jimmy Skidmore, guest star who has played tenor saxophone for several London bands, delighted jazz enthusiasts with his solos in the modern idiom, and was well supported by the Ronnie Mack Bop Group. Future sessions will feature jazz of all types.

ROYAL YORK BALLROOM - RYDE

THURSDAY NEXT, March 9th, 1960

The I.W. Branch of the Musicians Union proudly present

1961 BAND PARADE

A fantastic fiesta of every type of dance music
JAZZ DIXIELAND TRAD LATIN AMERICAN Etc.

featuring

THE JOHNNY BETTS GROUP * THE CHEROKEES * CYRIL DAISH DIXIE-
LANDERS * BOB HOWARTH AND HIS BAND * AL PODESTA * PAUL
RAYNOR * PETE TRUMAN TRIO * OWEN TONGE AND HIS WARNERS
BAND * THE TONI EDMUNDO CHACHALEROS * PETE TRUMAN QUARTET

Non-stop Dancing to 10 Bands 8 p.m. to 1 a.m.

TICKETS 3/6 or pay at the door

Bar Extension applied for Late buses to all parts

Capt. Heber Caplin Sims died at his home in Partlands Avenue in 1917. He founded a firm 'The South of England Organ Works' which built Church pipe organs, was a harmonium manufacturer and a tuner. In about 1898 he opened a branch in Partlands Avenue, which had probably ceased production by 1906.

IW Times advert 2 March 1961

Advert from 'Show of Shows' programme 1972

ESPLANADE BANDSTAND

June 8 - Sept. 22 DAILY at 10.45 a.m. & 3 p.m. (Not Saturdays)

AL PODESTA AND HIS BAND

A Musical treat for Everyone

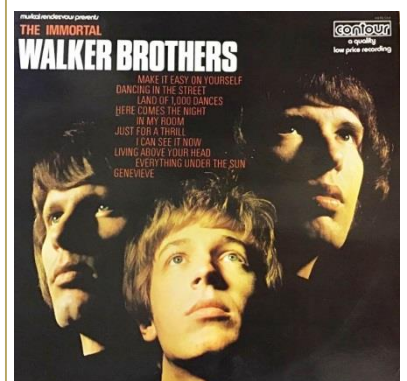
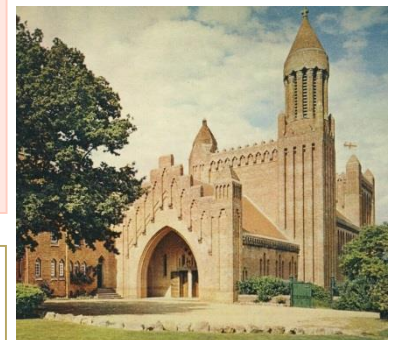
With Dancing on the lawn, Keep Fit Classes and Talent Competitions

Admission 10p

Alternate Sundays at 3 p.m. Ryde Borough Band

IW County Press 26 July 1975

Musical Hit – The impressive 28ft long Mortier organ, which was played to appreciative audiences outside the Prince Consort recently, raised approximately £317 for Rotary charities. The visit was arranged by the Rotary Club of Ryde, and the money came from collections and the sale of records.



IW County Press 8 December 1966

Beginning what he hoped would be "a spell of rest and meditation" at a Benedictine monastery near Ryde, pop singer Scott Engel, one of the Walker brothers, was besieged by teen-age girls on Sunday. A few days earlier the 22 year-old Hollywood born singer, one of the Walker Brothers, took a room with 300 other brothers—monks at Quarr Abbey.

Postcard by J. Arthur Dixon
Album cover – internet image



Selection of record sleeves which held shellac 78's
Hilary Lloyd

Status Quo were due to play in Ryde in 1992 as part of their 'Island Hopping' Tour, but it was cancelled.

They finally played at the Ryde Arena in November 1992