



RYDE SOCIAL HERITAGE GROUP

Beyond the Graves

Volume 17: Number 3: July 2022

A MEANDER UP THE HIGH STREET

The High Street
Kelly's IW Directory
1900

High st. from St. Thomas's square to Swanmore road.
1 HALSTED THOMAS HY. general & fancy draper
2 White Timothy Company, chemists
3 Adams Henry, grocer
4 Gibson Alfred & Son, boot makers
5 Browne Harry, hosier
5 Browne H. Silverwood, picture dealer
6 DUFFETT JAMES GEO. JUN. CORN & COAL MERCHANT
7 Purnell John Alfred, furnishing warehouse & undertaker
8 Purnell John Alfd. auctnr here are Manor gdns
9 Rickard Edmund, watch ma
10 Payton A. & N. baby linen warehouse
11 Williams George, piano-forte tuner
12 Martin Henry Robert, antique furniture dealer here is Albert pl
13 Ralph Miss L. confectioner
14 James Edgar, fruiterer
15 Home & Colonial Stores Limited
16 Hudson Thomas, boot ma
17 Wiltshire Edward, tailor
18 Sears Mrs. R. J. ladies' outfitter
19 Watkins James, currier
20 International Tea Co's. Stores Limited
21 Smith William, chemist
22 Granville hotel, Hbt. Reed here is Anglesea st

The High Street
Kelly's Ryde Directory
1951

HIGH STREET.
From St. Thomas's square to Swanmore road.
East side.
1 Duncan Jn. draper
2 Whites Timothy & Taylor Ltd. ironmngrs
3 White's Fish Restaurant
4 Wallstyles Ltd. decors. mers
4a, Hunt Leslie Wm
5 Token House (I.W.) Ltd. china & glass dlr
6 Brooker F. clothier
..... here are Manor gdns
9 Josephine (Miss B. K. Maddox), draper
10 Edwards Quinton Ltd. circulating library
11 Inez (E. E. M. White), ladies' hairdrrsr
12 Wright S. F. baby carriage dlr here is Albert pl
13 Rea's, fruiter
13 Rea Gerard
14 Elliott & Tyhurst, wool shop
15 Home & Colonial Stores (H. & C. (Retail) Ltd)
16 Young's The Radio Specialists, radio engnrs
17 Stead & Simpson Ltd. boot mkrs
18 Dewhurst J. H. Ltd. butchers
19 Hepworth's Ltd. tailors
20 International Tea Co's Stores Ltd
21 Boots The Chemists
22 Granville Hotel, E. A. London here is Anglesea st



The lower High Street from St Thomas' Square showing the horse trough given by Miss Brigstocke [Roy Brinton Collection] 'The kindly disposition of Miss Brigstocke was shown by many acts of generosity. Sympathising very much with animals she put up drinking fountains in St Thomas' Square, the Esplanade, the upper part of West Street, etc. which are such a boon to horses and cattle.'

Purnell's Furniture Shop at No 7 & 8, decorated for Queen Victoria's Jubilee in 1897, now Barclays Bank.
Roy Brinton Collection

Looking back towards St Thomas' Square, with Barclays Bank and Miss Pack on the right.



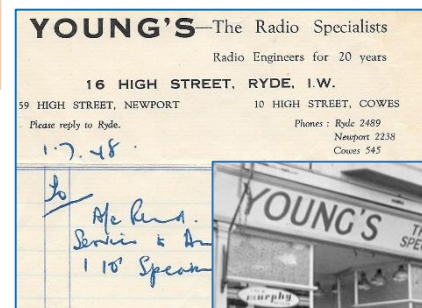
IW County Press
26 July 1975

IW Times 11 February 1886
Wanted a respectable young person to assist in a Boot and Shoe Shop. To sleep out of the house. Apply by letter only, to Alfred Gibson, 4 High Street, Ryde.

IW Observer 6 February 1864
Early Closing Movement - An effort is now being made by the assistants in the town with a view of inducing employers to adopt a uniform hour for closing, viz., 7 o'clock during the 6 winter months and 8 o'clock during the 6 summer months. The movement has already received the sanction of some of the principal tradesmen of the town.

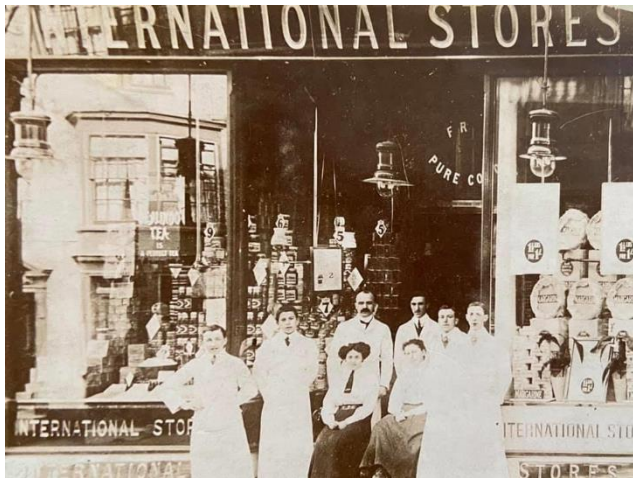
IW Express & County Paper 24 March 1894
A new business establishment has recently been opened in the High Street, Messrs Nelson & Co having opened at No 18 with a splendid stock of mangles, wringers, and various other household requisites.

Young's at no 16 receipt
Roy Brinton Collection
Photo late 1940's - RSHG



IW Observer 23 March 1861

Awful State of Things - It is well known that things are at present very dull in Ryde. On enquiring of several respectable tradespeople in two of the busiest streets in Ryde, as to what their daily receipts amounted to, at neither of the two shops alluded to, were they taking more than a trumpery half-a-crown a day, and at one shop they sometimes took perhaps ninepence one day and fourpence three farthings the next, and so on.



International Stores - Roy Brinton Collection

IW Observer 30 January 1864 - Removal - Joseph Butler, Fruiterer, Greengrocer, &c., begs to inform that he had removed from 39 High Street, to 130 High Street, Ryde, (directly opposite the Star Inn).

IW Times 4 March 1920 - Boots Stores - Sir Jesse Boot has acquired the business of Mr Burr, chemist High Street. Roy Brinton Collection



Image of the High Street – Brian Young

IW Observer 16 February 1861

Total Darkness - On Saturday evening about 6 o'clock, our tradespeople and others received a considerable shock to the nervous system, in consequence of the gas being suddenly shut off from their pipes. All business was suspended and the stock and valuables of the shopkeepers left at the mercy of the plunderers, and gentlemen with questionable fancies for overcoats. &c.

Hampshire Telegraph and
Sussex Chronicle
7 February 1880

A number of counterfeit half-sovereigns and sovereigns are said to have been put into circulation in the Isle of Wight during the past few days, causing some misgivings on the part of the trading community.

Hampshire Telegraph and Sussex
Chronicle 28 October 1882

On Friday evening considerable alarm was organised by an explosion of benzoline at the back of the shop of Mr King, ironmonger, of High Street, owing to a boy serving benzoline at night, but fortunately very little damage was done.

IW Observer 8 December 1900
Mr Gibson of the High Street has been exhibiting some looted finery in his shop window - a tiny pair of lady's shoes brought from Peking, so small that they would hardly fit an English baby three years old.

IW Observer 15 June 1861

Awning Nuisance - There is a by-law that awnings placed outside shop windows to keep off the sun, shall be seven feet in height from the pavement. It is not enforced, consequently much inconvenience is felt by pedestrians whose stature exceeds the average. Short people don't experience the luxury of having their hats constantly knocked over their eyes or off their heads. Perhaps these impediments upon the highway are so placed to invite the application of a sharp knife to clear them away. Why don't the police summon a string of the offenders?

The High Street Kelly's IW Directory 1900

- 23 James James & Son, nurserymen
- 24 Windsor Robert, tailor
- 25 Sapsworth Sidney Charles, cycle maker
- 26 Brading John M. tailor
- 27 Bevins Mrs. Jane, draper
- 28 Teague Arth. confectioner
- 29 Gatrall John, shoe maker
- 30 Teasdale Emanuel, confctr
- 31 Way A. F. & Co. tobconsts
- 32 World's Tea Co
- 33 Whittington Henry, refreshment rooms
- 34 Misselbrook & Weston, gros
- 35 Chiverton Thomas Mew, house decorator & artists' repository
- 36 James Hy. refreshment rms
- 37 & 146 Oliver Geo. boot ma
- 38 Page Arthur, outfitter
- 39 Blott Jonathan, butcher
- 40 Mee Frank, Star hotel
- here is Star st
- 41 Wright E. F. & J. bakers & confectioners
- 42 Jolliffe Sidney N. grocer
- 43 **MELLISH FREDERICK P.** printer, stationer & bookseller; post office
- 44 Eagle inn, Edward Sweetman, sen
- 45 Colonial Meat Stores (M. J. Morgan, proprietor)
- 46 & 136 Crabb George, jun. confectioner
- 47 Tansom Alfred, boot mkr
- 47 Tansom Mrs. Frances, greengrocer
- 48 Bristol Boot Co

The High Street Kelly's Ryde Directory 1951

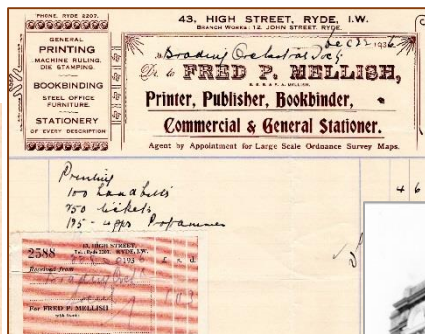
- 23 Pollard & Ramage Ltd. chemists & opticians. Tel. Ryde 2367
- 24 Hobbs E. jeweller
- 25 Grace Isph. R. & Co. radio engrs **C. CLARK & SONS**
- 26 & 27 Bevins J. draper
- 28 Scotch Wool & Hosiery Stores, wool stores
- 29 Barnett R. C. cooked meat dlr
- 30 Gumbrell Percy Jas. confctr
- 31 Way A. F. & Co. tobconsts
- 32 Marders (Mrs. A. Seedman, proprietress), gowns
- 32a, Hills Frank
- 33 Mayfayre Hotel (Mesdames L. & G. Arcari)
- 34 World's Stores Ltd. grocers
- 35 Lipton Ltd. provsn. mers
- 36 Freeman, Hardy & Willis Ltd. boot mkr
- 36 Hargett Herbt. Geo
- 37 & 147 Oliver Geo. (Footwear) Ltd. boot mkr
- 37 Groome Ebenzr
- 38 Bull E. Ltd. outfitters
- 39 Maypole Dairy Co. Ltd. provsn. mers
- 39a, Tomasin Arth. Hy. dentist
- 40 Star Hotel, Wm. Daniell
- here is Star st
- 41 **WRIGHT ALBERT F.** baker. Phone, Ryde 2136
- 41a, Kidd Alex. Jn
- 42 Pink W. & Sons Ltd. grocers
- 42 Hart Jn
- 43 Mellish Fred P. printer; Post & M. O. office
- 44 Eagle Inn
- 45 National Business Agency Ltd. estate agts
- 47 Scala Theatre (Isle of Wight Theatres Ltd. proprs)
- 48 Rose Ernest, saddler
- 49 Kervill & Morris, outfitters

Frank Wright, 41 High Street, was in court charged with not keeping an authentic account, in his Bread Register, of materials received in accordance with the Bread Act. He claimed they had been too busy and was given the benefit of the doubt. From a report in IW Observer 14 December 1918. Frank died 13 January 1921, aged 69, after having been in business for over 50 years, learning his trade from his father. Photo Roy Brinton Collection.

Inset Island Bakeries in the same premises. RSHG

The High Street Kelly's IW Directory 1900

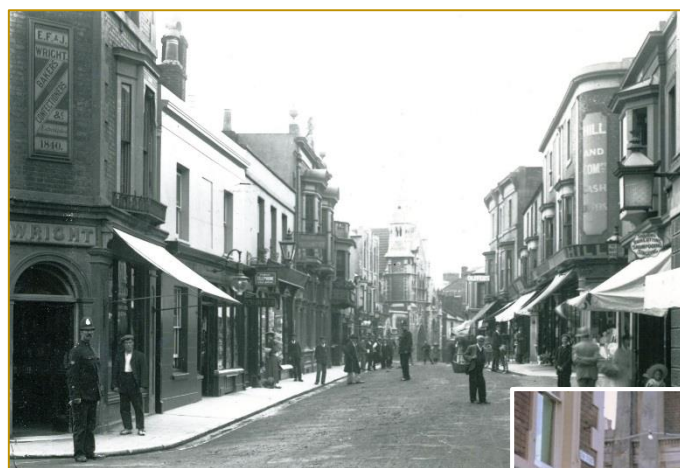
49 White William, grocer
..... here is Warwick pl
50 Wallis Hy. Caws, pawnbro
51 Wood William, stationer
52 James Albert Henry, baker
53 Butt Jas. & Co. boot makers
54 Biggs & Son, fruiterers
St. MARY'S CATHOLIC
CHURCH & CONVENT
St. Mary's Catholic School
Cahill Right Rev. Monsig-
nor Provost John Baptist
B.A.Lond. [vicar-general]
[Catholic] (St. Mary's
passage)
Cotter Rev. Wm. Timothy
[Catholic] (St. Mary's
passage)
..... here is St. Mary's passage...
56 Brown Henry, painter &c
57 Galley W. E. butcher
58 Ridgers Albert, tobacconist
59 London Central Meat Co.
Limited
60 Ward Edmund & Co. do-
mestic machinery depôt,
& cycle agents
61 Whittington Benj. baker
62 Grainger Jas. ironmonger
63 Jackman Chas. Wm. tailor
64 Morris Geo. Henry, draper
65 Whittington Mrs. Agnes,
confectioner
67 Blackett Miss S. J. ladies'
outfitter
68 Naylor Ross J. tobacconist
69 Heward William G. fishmgr
70 Malt & Hops P.H. Harry
William Caddy
..... here is St. John's rd
46



Fred. P. Mellish, no 43, receipt
RSHG

Photo of the Eagle Hotel
which was "front of house"
to Sweetman's Brewery
behind the hotel, in Star
Street.

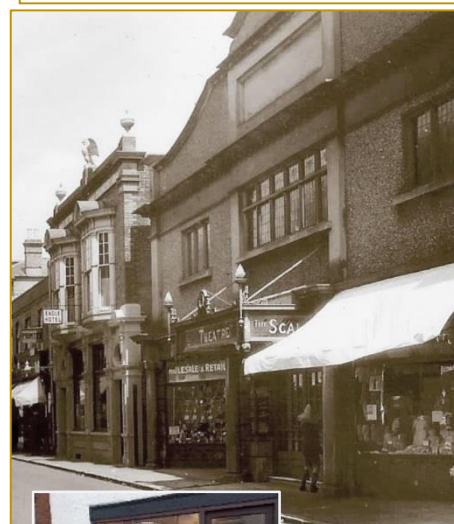
Roy Brinton Collection
The later photo, RSHG,
shows the upper part of the
property with the eagle still
remaining, 44 & 45 was at
the time of the photo, Who
One & RSPCA.



IW Observer
7 September 1878
Aquarium
Mr Langdon has
opened what he is
pleased to call the
"Precursor Aquarium"
in the High Street. It is
well stocked with a
number of very
handsome fish.



Photo of the Scala Cinema [RSHG]
Affectionately known as the fleapit, it
opened in 1922 and had 500 seats.
The exterior had a rough-cast finish
with grand imitation marble pillars
at the entrance and ran a continuous
programme from early afternoon
through the evening, later to include
Sunday evenings. The first manager
was Mr Milsom.
In the 1960's the cinema was sold to
Star Associate Holdings who
renamed it The Plaza and modernised
it. Later it was demolished and
replaced by a supermarket (Iceland)



The High Street Kelly's Ryde Directory 1951

..... here is Warwick pl
50 Ryde Trustee Savings Bank (D.
R. Gibbs, manager)
50a, Gibbs Dennis Roland
51 Sunbeam Laundry Ltd
52 James Alb. Hy. baker
53, 54 & 55 Presentation Convent
(Rev. Mother Superior)
St. Mary's Roman Catholic
Church & Convent
Murphy Rev. Thos. Edwd.
B.A. parish priest (St. Mary's
presbytery)
Kearney Rev. Wm. J. (assis-
tant priest) (St. Mary's
presbytery)
..... here is St. Mary's pass
57 Harvey Wm. Leonard, grocer
58 Hodges Easton Ltd. tobacconists
59 London Central Meat Co. Ltd
60 Nash F. S. fried fish shop
61 Buck H. bldrs. mer
62 Jeffery (E. M. Jeffery, propr.),
wool shop
63 Alderslade J. K. Ltd. decrtrs.
mers
Ltd. butchers
67 Castle's Furnishing Stores, up-
holsterers
68 Sharpe Mrs. E. E. tobacconist
69 Ashley R. fruiter
..... here is St. John's rd

Further up the High Street the shop front at no 64 remains
relatively unchanged today, despite changing hands
several times, from C. Barton, gents' outfitter in this image.



Phil the Barber, outside his old shop in the upper
High Street, and before moving to no 64,
previously Sew 'n' So.

Photos by Dave Bushell



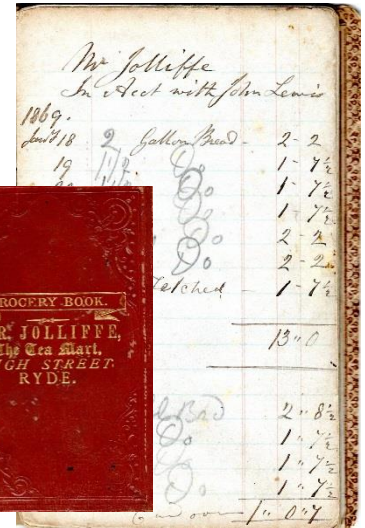
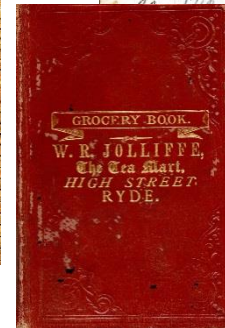
.... AND BACK DOWN THE OTHER SIDE

The High Street Kelly's IW Directory 1900

..... here is Green st
 127 Brewers' Arms P.H. Mrs.
 Elizabeth Ann Braddy
 128 Reed William Alfd. fruiter
 129 Purnell Geo. undertaker
 130 Pragnell Thos. beer retlr
 131 Ryde Temperance Hall
 132, 133 & 134 Turner George,
 painter &c
 135 Dimmer T. & Son, station-
 ers & bookbinders
 136 & 146 Crabb Geo. jun. confctr
 137 Morris Wm. Jn. watch ma
 138 Harrold Joseph, boot ma
 139 Heward Robert, fishmng
 140 King & Co. ironmongers
 141 White E. & A.S. cloths
 142 Bishop Brothers, boot mas
 143 Munt Frdk. W. antique dlr
 143 Royal Society for the
 Prevention of Cruelty to
 Animals (Frederick W.
 Munt, hon. sec)
 here is Bedworth pl
 144 Jones Mrs. Helen, greengro
 145 Steward John, confectioner
 146 & 37 Oliver Geo. boot ma
 147 Damp Edward, grocer
 148 Hill & Co. china & glass dlr
 149 Loader James, butcher
 150 & 151 Hill & Co. drapers
 here is Newport st
 152 Nag's Head P.H. B. B.
 Harvey
 153 Cooper Josph. pork butcher
 154 Ryde Oddfellows' Hall
 154 Ryde (483rd) Starr-Bow-
 kett Building Society
 (registered office)
 155 Colverson Francis, grngro
 156 Carter Francis (exors. of),
 saddlers
 156 Gough Charles
 157 Johncox Jn., jun. fishmng
 158 Denton Charles Smith,
 corn merchant
 159 Hillier Wm. Jas. butcher
 160 Trussler & Co. fruiterers
 160a, Healey Thomas Henry,
 boot maker
 161 Cooper Wm. pork butcher
 162 Francis Miss Alice, confr
 163 Vanner Miss Rose, tobacst
 164 Castle hotel, George
 Gale & Co. Limited
 here is John st



Jolliffe's Grocers were at No 126 High Street, on the corner with Green Street. Photograph of their premises RSHG, photograph of their painted sign by Tracy Welstead & cash book. Ann Barrett



The High Street Kelly's Ryde Directory 1951

127 Brewers' Arms P.H., C. G.
 Rayner
 128 Jacqueline's Café (W. H. E.
 Hetherington)
 129 Watts Edward & Sons Ltd.
 paint mers
 129 Cobbett Jn
 130 Prior Arth. Jas. butcher
 131 Ministry of Food Office
 132 Creamery Snack Bar (Parco
 Ltd. props)
 132 Norman Clive
 132 Cambers Eric
 134 Key G. N. & Son, butchers
 135 Dimmer T. & Son, staturs
 136 Fry F. C. baker
 136 Fry Fredk
 137 Taylor C. C. bldr
 137a, Donovan Albt. Fredk
 138 Jeffery (E. M. Jeffery, propr.),
 ladies' outfitter
 139 Attrill L. fruiter
 140 Oakham J. W. glazier
 140a, Butt S. & Co. boot mkr
 141 Castle's Furnishing Stores, up-
 holsterers
 142 Eaton Geo. Edwin, fruiter
 143 Gray K. & Sons Ltd. bakers
 here is Bedworth pl
 144 Wray & Sons Ltd. grocers
 145 Rugg Walter J. & Co. Ltd.
 tobacnsts
 145a, Hall Eric
 146 Gilham Alfd. Geo. fruiter
 147 & 37 Oliver Geo. (Footwear)
 Ltd. boot mkr
 147 May Jas
 148, 149 & 150 Hill's Stores Ltd.
 drapers
 150 Philbrick Wlfr. Percy
 here is Newport st
 151 Nag's Head P.H. Edwd.
 Robinson
 152 Bardon Arth. E. confctr
 153 Turner H. R. leather mer
 153 Ryde Oddfellows' Hall
 154 Mac Fisheries Ltd. fishmng
 155 Eastmans Ltd. Lutchers
 156 Morris P. R. jeweller
 157 Johncox Jn. jun. fishmng
 159 Siedman Geo
 159 GILL J. W. C. LTD. butchers
 (an island firm with service).
 Tel. Ryde 2113
 160 Woolworth F. W. & Co. Ltd.
 departmental stores
 161 British Bata Shoe Co. Ltd.
 (The), boot & shoe mkr
 162 Hofman Stanley Jas. fried fish
 dlr
 163 Tims A. W. fishmng
 164 Castle Hotel, Geo. Talbot
 here is John st



Dimmer's at no 135. Receipt Roy Brinton Collection & photograph, RSHG, Ryde Book Shop [image from their website]

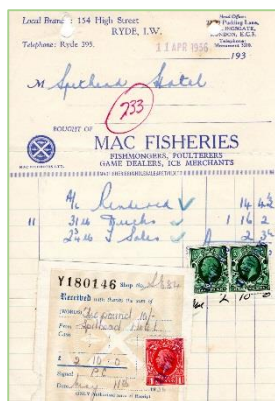
John Dimmer died in 1951 age 74. He was the son of a local bookbinder and had started his own business in the town aged 19. His elder daughter, Muriel, had helped in the business, and took it over after her father's death.



Harry Castle, born into a High Wycombe family of craftsmen, came to Ryde to work for a local firm, but soon started his own business in the High Street. He was a prominent member of the IW County Bowling Team, and played for the Island against a visiting South African team. He died January 1939. [Extracted from IW Times 12 January 1939]



Postcard with Hill's behind the 'Nags head' sign. Turner's was the shop for bags and luggage, with a smell of leather on entering. Next door a glimpse of Gerald & Joan Earley's greengrocers [now Barrow Boys] Photograph Roy Brinton Collection



The High Street Kelly's IW Directory 1900

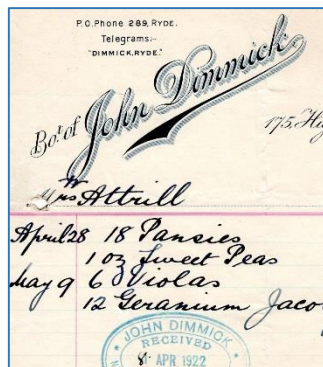
..... here is John st
 165 Denny & Co. drapers
 166 Johnson Alwyne Ernest,
 watch maker & jeweller
 167 Gage Benjamin, grocer
 168 Pollard Henry Hindes,
 chemist
 169 Locke William & Son,
 pork butchers
 170 Savage Wm. B. boot ma
 171 Holmes Alfred, clothier
 172 Baxter Frederick, fancy
 stationer
 173 Stamp James, butcher
 174 Prince of Wales P.H. Jas.
 Porter
 175 **DIMMICK JOHN**, florist
 176 Simmonds Hy. upholsterer
 178 Bridges Charles Henry,
 hair dresser
 179 Eastmans Lim. butchers
 180 Carter Mrs. M. greengracer
 181 Duffett James G. brewer



Various butchers at no 173. John Rayment had originally come to Newport to work, then, in the late 1920's, took over Stevenson's Ryde premises. He retired in 1947. Ironically he was a very keen fisherman. Photographs Alison Barnes [Mr Rayment's great niece]. Harry Ross then took over the shop. Photograph Roy Brinton Collection.

IW Observer 8 July 1922

In these progressive days it is only natural that merchants and purveyors should keep up-to-date in regard to the quick transit of goods by motor to the scattered towns and villages, and in this direction commendable enterprise is shown by Messrs. Eynon & Son, High-street, in a "Shop-on-Wheels" which this week commenced a regular delivery. "Dairy fed pork and Royal pork sausages" is prominently displayed on the van.



John Dimmick, at no 175.
 Photograph & receipt
 Roy Brinton Collection

George H. Saban had been apprenticed to Sainsbury's as a fishmonger in London. He moved to the Island after service in the First World War and joined MacFisheries. He retired aged 82, and died 6 years later.

[Extracted from IW County Press 1 April 1978]

Advert IW County Press 8 April 1972

FULL-TIME woman required to assist generally. — Apply Manager, MacFisheries, 157, High Street, Ryde

IW Observer 26 November 1864

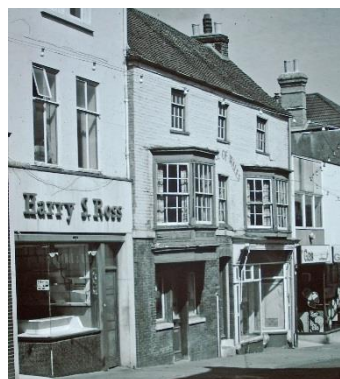
Advert - I Leal, Green Grocer, &c., No. 135 High Street, Ryde. Read's genuine Pork and Beef Sausages fresh from Newport every day. Cow-heel and Tripe on Tuesdays and Fridays. N.B. Newport River Oysters fresh every day.



The IW Co-op at no 166 & 7, with Radio Rentals next door, who rented out televisions as well as radios. Photograph Roy Brinton Collection



Looking down the High Street
 around 1906



IW Observer 7 July 1860
 High Price of Provisions -
 The price of butcher's meat
 is gradually reaching a
 point that must soon place
 it entirely beyond the reach
 of the labouring classes.

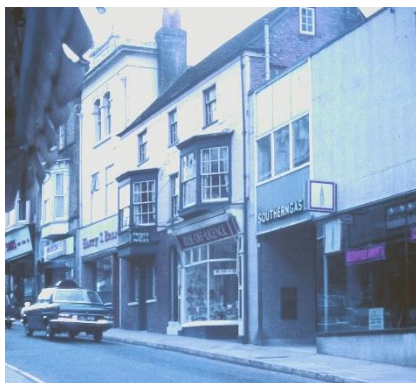


Tim's was another wet fish shop at no 163. Robert Tims took over the business and the IW Ice Factory, from his father, in 1961. Ill health forced his retirement in 1991, and he died in 1997. [Extracted from IW County Press 14 February 1997] Photograph Roy Brinton Collection

The High Street Kelly's Ryde Directory 1951

..... here is John st
 165 National Provincial Bank Ltd.
 (Chas. P. B. South, manager)
 165 Seaview Services Ltd. motor
 coach proprs
 165 Hook A. E. & Co. chartrd.
 acctnts
 166 & 167 Isle of Wight Co-operative
 Society Ltd
 168 Victory Cleaners (I. W.) Ltd.
 dyers & cleaners
 168a & 169 Clark J. P. (Ryde) Ltd.
 bakers
 170 & 171 Holmes & Sons, clothiers
 172 Chapman Wlfr. W. fancy
 repository
 173 Ross Harry S. butcher
 174 Prince of Wales P.H. E. F.
 Lewis
 174 Mew W. B. Langton & Co.
 Ltd. wine mers
 176 Isle of Wight Gas Undertaking
 (Southern Gas Board) (show-
 rooms)
 176a, Barter Regnld. Geo
 177 C.V.P. Electrical Ltd. electrol.
 engns
 178 Duffett's Corn Stores
 178a, Hippisley Jack
 179 Nevison Geo. butcher
 180 & 180a, Holbrooks, radio dhrs
 180a, County Press
 181 The Lion Hotel, E. A. Newn-
 ham





Not only could you pay a bill or actually speak to a real person in the gas showrooms, many events were held there as well. Photograph & Account Roy Brinton Collection.

IW Times 6 October 1966 – The Women's Gas Federation on Monday at the Southern Gas Board showrooms saw a dress show staged by Dorothy Perkins Ltd.

IW Times 7 May 1970
A talk on the plastics industry was given to 39 members of the Women's Gas Federation on Monday at the Southern Gas demonstration room, High Street. The speaker was Mr. W. A. Chandler of Transatlantic Plastics. Central heating systems were described by a Southern Gas spokesman.

CURRY'S LTD.
Save Money Shop Soiled and Transit Damaged Goods Clearance Save Money

3 gns. OFF
3 HOOVERMATICS. Automatic heater/timer control, fast spin dryer. Only 76 gns. cash. Easy terms.

2 gns. OFF
3 ACME Conquest WASHING MACHINES. Heater. Big twin tub takes full family wash. Only 55 gns. cash, or easy terms.

3 gns. OFF
1 HOOVER 65 WASHING MACHINE. Big twin tub takes full 6 lb. wash and spins extra dry. Now only 63 gns.

1 1/2 gns. OFF
1 SOBEL 304 TRANSISTOR RADIO. Two wave band. A real bargain. Only 91 gns. cash, or terms.

4 gns. OFF
1 DECCA 550 STEREOGRAM. Dark finish, sliding doors. Now only 61 gns. cash, or terms.

2 gns. OFF
1 COSMOR RADIOGRAM. Contemporary design, 4-speed autochanger. Now only 42 gns. cash, or terms.

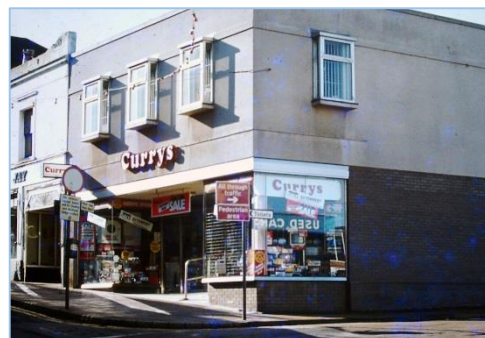
1 1/2 gns. OFF
1 G.E.C. automatic RECORD PLAYER. Blue finish. Excellent reproducer. Only 17 1/2 gns. cash, or terms.

3 gns. OFF
1 RALEIGH Trent Tourist GENTS CYCLE. 3-speed, Maroon finish. Now only 19 gns. cash, or terms.

ALL ABOVE ITEMS A ONCE-ONLY OPPORTUNITY
Don't delay—Save money now. Shop at
CURRY LTD. - 169 High Street, Ryde



The Lion Pub on the corner of Garfield Road, rebuilt as Curry's, more recently EWM, now a charity shop. Photographs Roy Brinton Collection



The High Street
Kelly's Ryde
Directory
1951

IW Times 14 November 1963

The High Street Kelly's IW Directory 1900

- 182 Singer Manufacturing Co
- 183 Butt C.M. & Co. ladies' tailors
- 184 Garrett L.K. confectioner
- 185 & 186 Brook E. F. india rubber manufacturer

Portsmouth Telegraph or Mottley's Naval and Military Journal 29 June 1801

Mr John Lake, a very wealthy butcher in the High Street, died on Monday, at Ryde. He was returning from the burial of his brother, who had left him a very considerable increase of fortune. – His death happened in the following manner: - As he was riding down the hill into Old Ryde, he fell from his horse and was never perceived to breathe after. One thousand and forty-four pounds three shillings and sevenpence halfpenny were found in his pockets.

- 182 Island Dairies Ltd. dairy. Tel. Ryde 2153/3253
- 183 Mallory Mrs. R. statnr
- 183a, Rashley Rowland
- 184 Kiddle C. F. confctnr
- 185a, Hinton Jn. Fredk. teacher of languages
- 186 Wight Motors (Ryde) Ltd. motor agts
- 185 Fashion Bureau (Mrs. J. R. Metcalfe, proprietress), dress designers
- 185 Perks Jas. H. artists' colour-man
- 187 Warman J. C., F.B.O.A., F.S.M.C. dispensing optician
- 188 Co-operative Insurance Society Ltd. (H. C. Beetham, mgr)

..... And There Were Shops Above the Traffic Lights Too

IW Observer 10 July 1909

Whilst attending to a blind on Saturday night, Thomas Sylvester, an employee of Mr C J De Launay, grocer, High Street, lost his balance and fell from the steps against the window, which was smashed. The man was uninjured.

IW Observer 30 November 1912

Mr. M De Launay had the misfortune to lose his finger through an accident while using a rotary bacon cutter. The finger was severed near the middle joint, but the whole finger was afterwards amputated.

IW Observer 18 October 1913

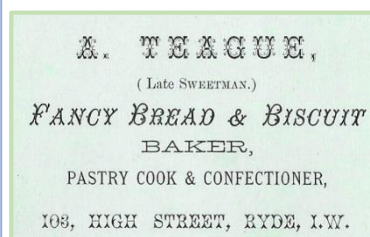
On Monday evening a horse, attached to a trolley, the property of Chaplin & Co, bolted and crashed into Mr C J De Launay's shop window, breaking two panes of glass, the woodwork of the shop door, and splitting the counter inside.

Avoid Charles De Launay's grocer's shop at no's 120 & 121!

IW Observer 4 February 1860. A deputation of carpenters, belonging to Messrs Dashwood [of no 80 High Street] waited on their employers on Thursday evening last, for an advance in wages wishing to be paid the same as other establishments in the same line. As this is one of the head firms in the town, doubtless satisfactory arrangements will be concluded between the employees and the employer.



Reed's Greengrocers at no 140
Roy Brinton Collection



Business card,
RSHG