



# RYDE SOCIAL HERITAGE GROUP

## Beyond the Graves

Volume 18: Number 2: April 2023

### THE SEASONS.

#### SPRING.

The little birds are singing;  
The primrose pale is springing—  
Sweetest Spring!  
The Winter's day is passed away,  
And all appears so glad and gay  
O sweetest, sweetest Spring!

IW Observer 20 July 1861

# Spring



Photo Pink Bluebells in Ryde Cemetery [RSHG]  
Bluebells are a true joy of spring, and this pretty pink variety provides masses of colour and flowering with true elegance every spring. *Hyacinthoides hispanica* 'Queen of Pinks' really is bluebell royalty.

The meteorological first day of Spring is 1<sup>st</sup> March, also celebrated in Wales as St David's Day, the daffodil being the emblem. The earliest known reference to Daffodils can be found in the 6th century AD writings of the Prophet Mohammed.

Daffodils symbolise rebirth, new beginnings and friendship and are synonymous with spring. Their botanic name is narcissus, sometimes they are called jonquils and because of their long association with Lent, they are also known in England as the "Lent Lily." Folklore connects the daffodil to not only a sign of winter's end but it is a lucky emblem of future prosperity throughout the world. In Wales, it is said that if you spot the first daffodil of the season you will have 12 months filled with wealth, and Chinese legend says that if a daffodil bulb is forced to bloom during the New Year, it will bring good luck to your home.

Daffodils in Ryde Cemetery 2016  
Carol Strong  
Primroses in Ryde Cemetery  
2016 RSHG  
An RSHG Spring Display



#### IW Observer 14 May 1859

Delights of Spring - The appearance of the vegetation in and around Ryde are now delightful. The meadows have the appearance of "the field of the cloth of gold" which the blooms of the chestnut and hawthorn are enriched and varied by that of the lilac and laburnham.

#### IW Observer 23 May 1863

Weather & Crops - After a mild winter, the old desire of farmers that "a bushel of March dust is worth its weight in legal (silver) coin" was realised; but the month of April was unusually dry, so that the "Merry month of May" succeeded with a sere and sterile aspect.

**CHARLES DIMMICK'S** new spring CATALOGUE OF BEDDING-OUT PLANTS, with prices and instructions for planting, is now ready. Purchasers are requested to send for one, or pay a visit and inspect the stock.

IW Observer 24 April 1909

#### IW Observer 2 May 1863

Horticulture - As the bedding-out season is advancing, our florists are astir. Judging by their catalogues, Dimmick's collection appears unusually prolific and varied, and his plants are both healthy and strong. Guy's catalogue is also extensive, the speciality of which, is geraniums

#### IW Observer 12 May 1860

Philemela - A Nightingale and his mate have located themselves in some garden in Bellevue Road, which is rather unusual for this shy bird to do. During the greater part of the night his splendid music can be heard all over the town if the air is calm.

#### IW Observer 19 March 1864

Heralds of Spring - A German band has arrived. If one swallow doesn't make summer, one band does.

#### IW Observer 6 April 1907

One swallow does not make a summer, but the arrival of a number in the Island during the week may be regarded as a sign that spring is here.

# Spring Cleaning

**THE MELVILLE LAUNDRY,**  
34, MELVILLE STREET, RYDE.  
**THIS LAUNDRY** is situated in the most open and best part of the Town. The Premises are very convenient, with large open Drying Grounds, fitted with the latest improvements for perfect Washing and Finishing of every class of work, including Clear Starching and Glazing. Orders from Private Families, Hotels, Clubs, Schools, &c., on Moderate Terms.  
Letters addressed to Miss Fowles will receive immediate attention

IW Observer 21 August 1888

**HANSFORDS**  
10-11 CROSS STREET, RYDE. Phone 2266  
FURNISHING SPECIALISTS SINCE 1830

You are invited to inspect our wide range  
of  
**SPRING FABRICS**  
From 7/11 yd. 48 in. wide

LOOSE COVERS MADE AND FITTED BY EXPERTS  
A perfect fit guaranteed

'Ryde Players' Programme 1955

**IW Observer 17 February 1912**

W & J Woods, 26 and 27 Cross Street, Ryde, Hardware Merchants, have a large selection of Garden Tools for the Spring Season. All Warranted. For durability in use. Any defective tool exchanged for a new one free of cost to the purchaser. Repairs to Lawn Mowers. If the Lawn Mower is to be ready for good work it should be examined NOW by experienced hands.

Photo of WJ Woods shop, Cross Street, Roy Brinton Archive

Advert IW County Press 10 April 1909

**W. & J. WOODS,**  
26 and 27, CROSS STREET, RYDE.  
Established 1807.  
Hardware Merchants,  
Manufacturing and Furnishing Ironmongers,  
Sanitarians, Electricians, Coppersmiths,  
Experts in Hot Water Heating.

The Pneumatic Sweeper for  
**SPRING CLEANING**  
18  
**'THE BOREAS.'**

It can be carried anywhere, and  
Only needs One Person to work it.

A lengthy article appeared in the IW Observer, 27 March 1909, hoping that the promise of Spring had not 'changed into a blizzard of wind and hail and snow and sleet' before it appeared in print. It said many people 'do not care a jot about springtime' as the bright sunshine makes clothes look shabby and 'searches out the dingy corners of your home'. The writer did like it, 'it makes one feel young and strong, and that there is a future ... and I really like spring-cleaning ... I have no sympathy with the gentleman who sits down and howls when his study or office has been at last submitted to the hands of the charlady ... if I were rich I would have my house papered and painted ... or given a fresh coat of washable distemper every spring of my life ... I would have all the beds picked, and all the ticks sent to be dry-cleaned and every kind of mischief repaired'.

**SPRING. 1864.**  
**NOW READY FOR THE FURNISHING SEASON,**  
AT  
**EDMUND COOPER'S,**  
**LONDON HOUSE, CROSS STREET, RYDE.**  
A VERY extensive assortment of Brussels, Tapestry, Felt, Kidderminster, and other CARPETS, in an elegant variety of new and pleasing designs. The same will be found of SUPERIOR QUALITIES, and at LOW PRICES.  
A very complete Stock of Damasks, Table Covers, Hearth Rugs, Cornices, well-seasoned Floor Cloths, &c. &c.  
Genuine makes in Linen and Cotton Sheetings, Towellings, Counterpanes, Quilts, Muslin, Leno, and Lace Curtains, Ticks, Dimities, Table Linen, &c., the prices of which invite special attention and comparison.

IW Observer 4 June 1864

**IW Observer 3 April 1915**

Spring Cleaning – During the busy time of spring cleaning we frequently come across articles for which we have no further use. Miss Brooke would be grateful for pictures, large or small, which might be of use in the Sunday School. Besides religious subjects, landscapes, nature, hospital life, coloured prints and others will be of value in various ways.

**Vacuum Cleaners**  
Save Time & Labour.

"THE ZORST"  
"THE GEM"  
"THE DAISY"  
...ALL IN STOCK...

**PURNELL & PURNELL,**  
7 & 8, HIGH STREET, RYDE.  
Phone 2006.  
**BISSELL CARPET SWEEPERS**  
Full selection at pre-war prices

IW Observer 4 March 1916



**IW Observer 6 May 1865**

Old Custom – The sweeps of Ryde revived Jack-in-the-Green on May-day, and he cut the usual capers to the music of a full band, consisting of chin-pipes, drum, scrapers, and shovels. Some old ones and all young ones were amused with the grotesque display, so the venture seemed a profitable one.



**BETTER. BETTER. BETTER.**  
NO MORE BLACK BEETLES.  
"They shall die, and ere long be extinct."  
**GIBBS AND GURNELL'S**  
CELEBRATED  
**INSECT POWDER**  
ENTIRELY DESTROY  
BEETLES, COCKROACHES, CRICKETS, BUGS, FLEAS, ANTS,  
MOTHS, and all other troublesome insects.  
**GIBBS AND GURNELL, CHEMISTS,**  
UNION STREET, RYDE.

IW Observer 28 April 1888

**IW Observer 31 August 1895**

Spring is the time when Black Beetles invade us in full force. To cope with them successfully use Flower's Beetle Poison, which they like and greedily devour. In bottles, price 1s, of Flower, Chemist, Pier Street, Ryde.

# Spring Wardrobe

## LINEN COSTUMES.

Ladies' light dresses and costumes in linen, muslin, lace, &c., can be beautifully cleaned and the colours retained.  
Faded linen costumes can be re-dyed art shades.

**BRUNSWICK Dyeing & Cleaning Co., Ltd.,**  
10 Union Street, RYDE.  
Agencies throughout the Island.

**BRIGHT & MINNS,**  
LTD.,  
**DYERS & CLEANERS**  
By Appointment  
To Her Late Majesty Queen Victoria.

**LADIES' EVENING DRESSES,  
WRAPS, & GLOVES  
DRY-CLEANED QUICKLY.**

WORKS - NEWPORT, I.W.

BRANCHES:—

RYDE ...	25 CROSS STREET.
VENTNOR ...	61 HIGH STREET.
SANDOWN ...	BROADWAY.
SHANKLIN ...	REGENT STREET.
SOUTHSEA ...	18 MARMION ROAD.
"	70 FAWCETT ROAD.

A column in the IW Observer, 19 March 1910, was headed 'The Spring Renovation', saying that the Spring sunshine was always welcome, but never fails to remind us of the need for renovation, not only in the manner of dress. 'Half-shabby clothes, which have done very well for the dark dingy days, are no longer possible, and must be put aside for grave consideration as to whether or not they are worth a visit to the cleaners or dyers'.

IW County Press 27 December 1913

Better still – Buy new clothes.

IW Observer 12 March 1910

New Tailor-Mades – Fine navy serge tailor-mades are having an immense vogue this Spring, for the most part decorated with black silk braid in diverse widths, and big black braided buttons. The pleated skirt still obtains, and is usually a success, but coats are decidedly eccentric.

**SPRING MILLINERY.**  
Wonderful bargains in millinery are being offered at the sales now in full swing. The reason for this new determined "clear out" probably lies in the fact that of late years the winter season in the millinery world has grown shorter and shorter, and that the end of January now finds us sallying forth in spring-like headgear. Another reason is that shapes are altering considerably, and, further, there is to be a revival in the craze for flowers. Hats and toques, built for early spring wear on the Riviera, are one mass of blooms, and the bargain hunter, who "falls upon a chance" to buy up cheaply a thick ruche of violets, a deep fringe of "button" roses, or wide bands of other small flowers massed closely together, will speedily find an opportunity for airing such treasures.

**H. PACK & CO.**  
TOP OF UNION STREET  
**RYDE.**

WE ARE NOW RECEIVING OUR  
**FIRST DELIVERIES**  
OF  
**MILLINERY,**  
**BLOUSES,**  
**SHIRTS, &C.,**  
FOR  
**...Early Spring Wear...**  
INSPECTION INVITED.  
**H. PACK & CO., RYDE.**

IW Observer 19 March 1910

**J. BEVINS**  
(Proprietor: J. T. GRACE)

Draper and Milliner

Outfitter and Tailor

**26 & 27 HIGH STREET, RYDE**  
Opposite John Street. Handy for all Buses. I. of W.

Bevins Advert, 1935, when they had two High Street shops.  
No 26 before closure in 2001.  
Roy Brinton Archive



The ladies show off their elaborate hats at a Garden Party at Appley Towers, while the men mostly make do with straw boaters. Roy Brinton Archive

IW Observer 13 May 1911

Old Sol has been lavish of his beams this week, the weather being almost as warm as we usually get at midsummer. Those who observe the old rule of "casting no clout till May be out" this year will probably lose a few pounds weight.

# Spring Vale

Map of Spring Vale - Sale Catalogue, 1906  
Roy Brinton Archive

Extracted from the IW Observer 8 October 1853.

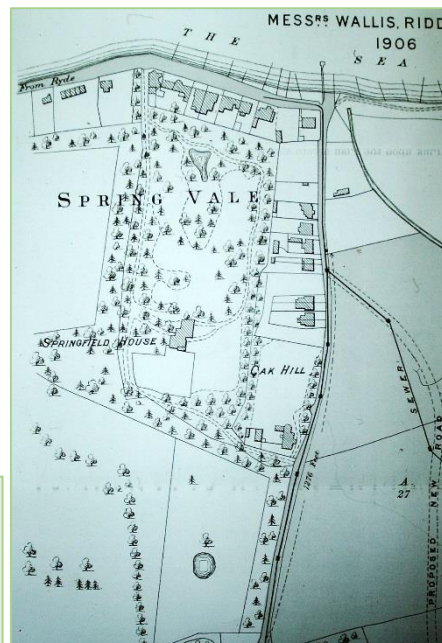
The newspaper noted that as Newport and Sandown had failed in 'supporting the turf' it was left to Ryde, which was all for yachting, and did not know:

**'When two of them do run a race  
Whether they gallop, trot or pace.'**

However, a few individuals entered into a subscription to start a few races. 'They chose for the course the excellent sand banks facing Spring Vale, and directly opposite Spithead, about a mile to the eastward of Ryde'. The splendid weather on Monday 3<sup>rd</sup> October attracted 'fashionables from all parts of the Island', suggesting if the event was run again there would be no lack of patronage.

## IW Observer 20 February 1858

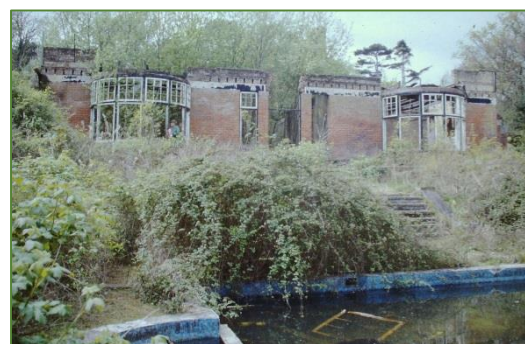
Spring Vale – On Wednesday last there was a capital sparrow match in a field contiguous to the Bath Tavern, and it is seldom better shooting took place. After the match, the party sat down to an excellent spread which was worthy of a much better attendance.



Spring Vale LL Postcard – Ann Barrett



Spring Vale Postcard – Paul Kingswell



Photographs of Springfield Court, Springvale in it's heyday, and sadly, when past it's best.  
Roy Brinton Archive



## IW Observer 22 March 1913

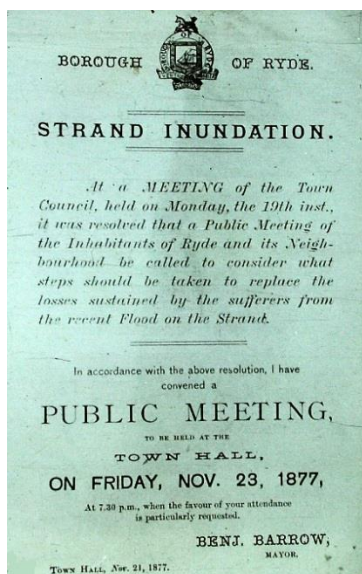
Tree Felling - Years ago the land surrounding Ryde was the most luxuriantly wooded area in the Island, but today, as one looks over the country from Rowlands Cross, he cannot but be struck by the bare and uninteresting appearance which this unrestricted tree destruction has given to the landscape. People used to come to Ryde for its beautiful surroundings, but these beauties are diminishing each year.

## IW Times 9 March 1961

Whitefield Woods - Dear Sir, - I was horrified to see that a great many of the trees were marked for felling. Surely Ryde Town Council will never allow these beautiful woods to be destroyed? Whitefield Woods are a great asset to Ryde and a popular beauty spot for residents and holiday-makers alike, they have been mentioned in guide books as of outstanding attraction. I do hope something can be done to save these woodlands. Yours...W G Harris.

# Spring Tides

**A Spring Tide** is a tide in which the difference between high and low tide is the greatest. Spring tides occur when the moon is either new or full, and the sun, the moon, and the earth are aligned.



## IW Observer 14 May 1892

Ald Barton asked if anything had been done to remedy the defect in the eastern outfall sewer. The Surveyor replied "we are going to do it at the next Spring tide."

## IW Observer 16 February 1895

It would be remembered that in 1877 the Strand was badly flooded on two occasions in the autumn. It was partly done by the water coming from the marshes. At the same time that they had these heavy rains they also had very high spring tides. Almost all the houses on the Strand had basements which were below high-water mark at high spring tides.

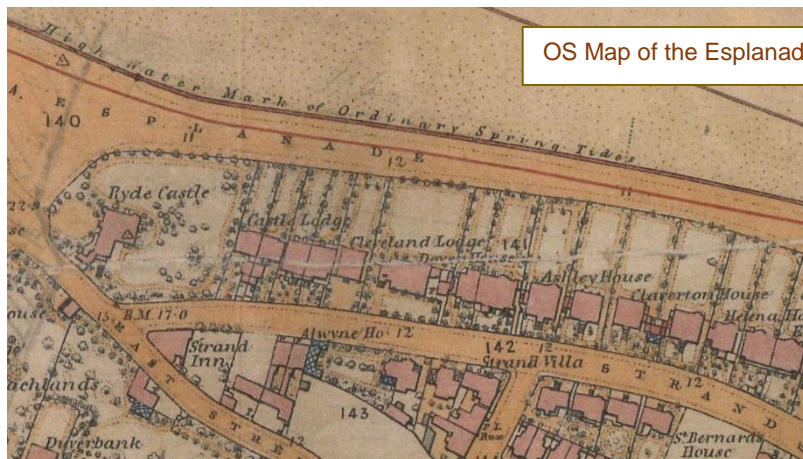
Public Meeting 1877  
Roy Brinton Archive



Postcard of The Strand - Jamie Roberts

## IW Observer 18 March 1899

Mr. H. Spanner has sold his business in Pier Street to Mr. R. Williams, of Cardiff, and is leaving Ryde for London. It is the oldest business in Ryde, having been founded by the Riddett family long before there was an Esplanade or jetty, and there are places still on the doors where they used to put up boards to prevent the sea coming in at spring tides.



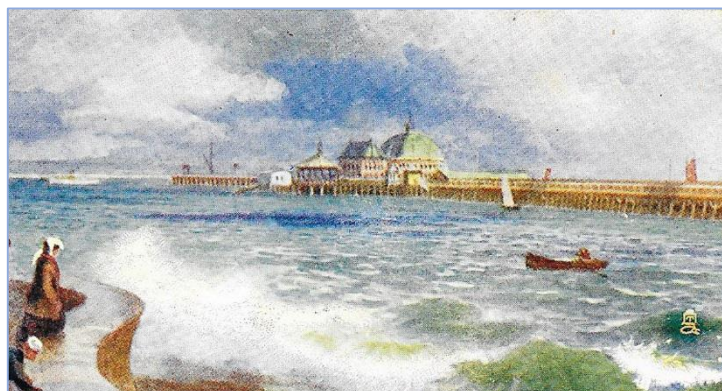
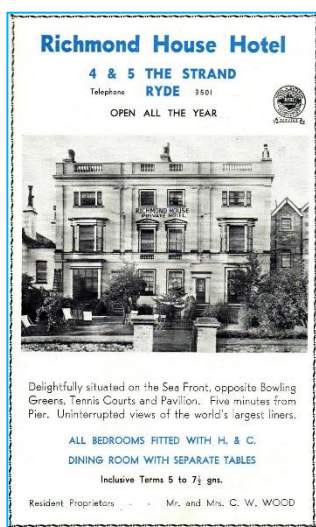
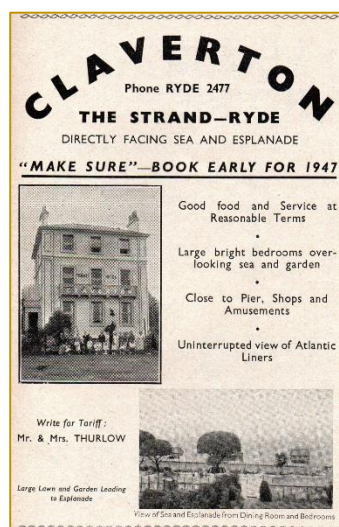
OS Map of the Esplanade and Strand showing Spring Tide High Water Mark

## IW Observer 16 April 1910

The heavy spring tides of the past week have brought in a phenomenal quantity of sand to the wall at the Eastern Esplanade. Over the outlet to the stream near Cornwall Street where formerly there was a deep depression, there is now a sufficient depth of sand to permit of a person leaping on to the wall with ease.

## IW Observer 3<sup>rd</sup> September 1910

Flooding – Property owners in the Strand are endeavouring to devise measures to prevent their cellars being inundated. A correspondent suggested that the Corporation should call in Dutch engineers who are famous for turning swamps into dry land.



Spring Tide at the Western Esplanade  
Tucks Oilette Postcard Ann Barrett

Adverts for Hotels in the Strand  
Claverton – 1947 Ryde & Seaview Guide  
Richmond – 1951 Ryde & Seaview Guide  
Both Ann Barrett

## IW Times 10 March 1966

Splashing Out – A sum of £150 has been set aside to pay for "pumping out" operations to alleviate flooding which may occur in the Strand and West Hill Road areas during unusually wet weather.

# Springy Bits

Almost a hundred cakes were distributed to mothers who passed in procession at St John's Church, Oakfield, on Sunday, Mothering Sunday, by the Vicar, the Rev E T H Royds



**Simnel cake**, known since at least the medieval times, is a light fruit cake with two layers of almond paste or marzipan, one in the middle and one on top, that is eaten during the Easter period. More recently, they became a Mothering Sunday tradition, when young girls in service would make one to be taken home to their mothers on their day off. Conventionally eleven marzipan balls are used to decorate the cake, with a story that the balls represent the twelve apostles, minus Judas. This tradition developed late in the Victorian era, altering the mid Victorian tradition of decorating the cakes with preserved fruits and flowers.

## CAUTION TO INTENDED SPRING OR SUMMER VISITORS TO RYDE,

*Through the Editor of the Isle of Wight Observer.*

Pray allow me to exhort you to take especial care to bring with you very thick-soled boots or shoes—an inch or two thick at least—or wooden-soled clogs, French sabots preferable, to protect your feet from the pains and penalties of the sharp-pointed flints, pebbles, and stones, of which all the walks and promenades are composed; and, if you do attempt the fashionable newly-formed Esplanade, forget not very stout elastic stockings to protect your ankles and knees from dislocation and sprains, which threaten you at every step, in consequence of the beautiful undulating surface, dips, ups and downs, and puddles of which it consists. The horse road being usually preferred by the biped visitors to that intended for them, the quadrupedal steel shoes may be useful for visitors.

**A SORE-FOOTED VISITOR.**

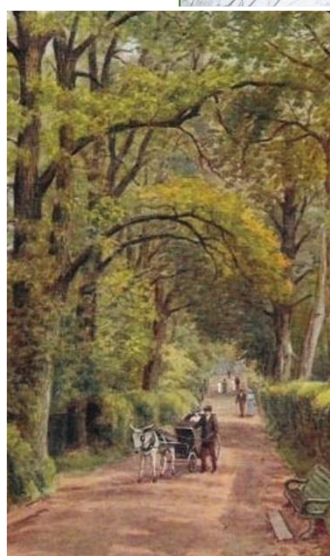
Pier-hotel, Ryde, March 8, 1859.

IW Observer 12 March 1859



## IW Observer 2 April 1859

For many years we have witnessed with great regret, a continual encroachment made upon the footpaths around Ryde. One after another have the beautiful verdant walks about Appley and St John's been closed up; then followed the shutting up of the path through Pelham Shrubs to the shore, forming a junction with that by the side of Binstead Brook.



Spring rambles in Spencer Road  
B & W Postcard - Ann Barrett  
Coloured Postcard – RSHG  
Steamer at Ryde Pier Postcard – Ann Barrett

## IW County Press 12 April 1936

The Island was set for a busy Easter after inquiries at the various points of Island entry indicated a large number of people were planning to visit. Thousands of visitors were hoping to take advantage of the predicted good weather over the weekend. At Ryde, Southern railway put on six extra steamers to help cope with the thousands of extra passengers.

## IW County Press 30 October 1965

How many people were interested in walking footpaths today, apart from one or two ramblers' associations? They all rode in cars.

## IW County Press 10 May 1958

Extra boats and trains were provided by British Railways to bring more than 1,100 members of the Ramblers' Association to the Island for a day's outing. The excursion from London was one of a series of spring trips organised by the association and members declared they were charmed by the beauty of the Island.

## IW County Press 10 May 1975

A point of friction between farmers and ramblers was the ramblers' insistence on using footpaths that had growing crops at critical stages. The ramblers had offered to assist any farmers who wanted help with way markings.

## Altering the Clocks – Spring Forward. Fall Back

American politician and inventor Benjamin Franklin first came up with the idea while in Paris in 1784, suggesting that if people got up earlier, when it was lighter, it would save on candles.

In 1907 a UK builder called William Willett, published a leaflet called 'The Waste of Daylight', encouraging people to get out of bed earlier. Moving the clocks backwards and forwards was discussed by the Government in 1908, but was unpopular. Willett spent his life trying to convince people that it was a good idea, but it was only introduced in the UK in 1916, a year after he died.



A Spring Ramblers view from the Old Upton Windmill  
Postcard Roy Brinton Archive