



RYDE SOCIAL HERITAGE GROUP

Beyond the Graves

Volume 19: Number 1: January 2024

IN RETROSPECT

IN RETROSPECT ~ ESPLANADE IMPROVEMENTS

The IW Times 6 February 1969 reported on concerns by IW Coach operators over proposed new developments, particularly sweeping alterations planned for Ryde Esplanade, due to begin in October, in connection with a new western relief road. They hoped coach operators' interests would not be lost sight of, particularly as it affects coach stands and the picking up and setting down points near the Pier Gates, which becomes a more difficult problem each year. The cessation of the tram service on the Pier had already caused a lot of inconvenience.

The report continued that the Highways Authority were to be congratulated on many road improvements in the Island, achieved despite financial restrictions, which had in no way detracted from the beauty of the Island.



1969/1970 Plan of proposed Esplanade improvements [RSHG]



Detail from a Valentine's Postcard of the Esplanade, pencil date on reverse 1939 – Hilary Lloyd

Undated photograph of the bus stop outside Ryde Esplanade Railway Station. Roy Brinton Collection



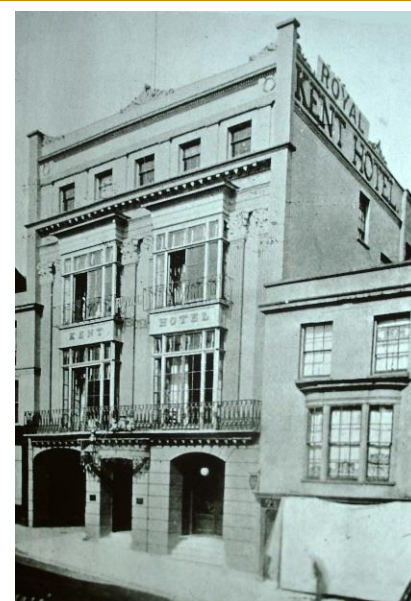
Two photographs of the reinforcement of the Railway Tunnel at Ryde Esplanade – Roy Brinton Collection



IN RETROSPECT ~ OF AN ICONIC RYDE BUILDING


The Royal Squadron, formerly known as the Kent Hotel, was reputedly where Queen Victoria and Prince Albert lodged when house hunting and viewing Osborne. Many Royal visitors subsequently stayed there. Union Street was not always a scene of aristocratic shoppers and carnival celebrations. In the summer of 1837 the Ryde Riots took place outside the Kent Hotel. An election had just returned the Tory, Mr Holmes, but in Ryde, a large majority were supporters of the Reformist, Mr Pelham. A mob of around 200 attacked the Kent Hotel, smashing windows. Mr Holmes's celebratory band was playing outside. Bandsmen were attacked, instruments broken, someone snatched a French horn and ran off with it! Much street fighting took place continuing into the early hours of the following morning. Evidence from the court case about the Ryde Riots stated: *"The Band defended themselves, one band member struck Mr. Cluitt on the back of his head with an instrument. The mob rushed at Mr. Peddar, knocked him down, gave him a black eye, tore his shirt, waistcoat, braces and hat and kicked him down the street. About two hundred people gathered, some armed with knives, sticks and bludgeons. There was a great deal of swearing and shouting. A man turned to the mob and shouted 'The first man who touches Mr. Stephens I'll cleave his skull'. It was not safe for anyone to be on the street".*

FROM THE RYDE AUDIO TRAIL - RSHG



The Photograph [right] in 1900 shows little change from the photograph when it was called 'Wheeler's Hotel' [above]. The Stephens family put a new frontage on when they opened the Hotel in 1835. Both from the Roy Brinton Collection.

Advert Ryde & Seaview Guide 1935.



By Royal Appointment to Her late Majesty Queen Victoria and Prince Consort.

ROYAL SQUADRON HOTEL,

RYDE,
I.W.

Two minutes from Promenade, Station, Buses, Sports, Amusements and Shopping Centre.

The most popular and conveniently placed Hotel in Ryde. Write for Brochure No. 3.

THE HOTEL FOR
CONTINENTAL VISITORS.

HOT AND COLD RUNNING WATER IN BEDROOMS.

EXCELLENT CUISINE.	Parties Catered For.	CHOICEST WINES.
MODERATE TERMS.		FULLY LICENSED.

Telephone—RYDE 205

Proprietors.

When replying to advertisers please mention the "Ryde and Seaview Guide."

IW Times 14 August 1969

Old Buildings - I wonder how many saw the Official Notice recently saying an application had been made for approval to alter and extend the Royal Squadron Hotel in Union Street. It is hoped that the upper windows and the beautiful balcony will not be changed; and that any alterations to the facade will be in keeping with this hotel, built in 1812. It was chilling to read that at a Council meeting a councillor was reported as saying: "I cannot see any part of Union Street which is worth preserving....."

IW County Press 28 April 1973

Hotel Fire – Seventeen guests were led to safety and one was rescued from an upstairs window by firemen using a ladder when fire swept through part of the Royal Squadron Hotel, Union Street, Ryde, during the early hours of Saturday morning. The blaze is believed to have broken out in a bedroom on the second floor, which was gutted. Some 40 firemen fought the blaze, using two appliances from Ryde, and three from Newport.



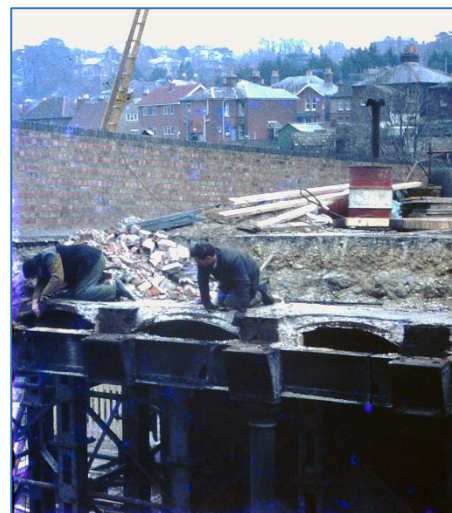
One of the interior rooms of the hotel from 'Mates Guide', 1900

Petronella Ursula Parnall was baptised in 1906, at All Saints' Church, Ryde, when her father was described as a Hotel Keeper. In 1911 young Petronella was with her mother, Mrs Marie Parnall, at the King Lud. By Kelly's Directory of 1935 Mrs M.H. Parnall was listed at the Royal Squadron Hotel. Petronella married Frank Walker and the couple ran the Royal Squadron Hotel as partners. She died, aged 50, in 1954. [Obituary IW Times 23 December 1954]

The IW Observer, 27 November 1909 reported on the well-known actress, Dolly Parnall [or Parnell] who married Prince Nasir Ali Khan. She was 'a cousin of Mr Parnell, the genial proprietor of the King Lud Hotel'. On staying in Ryde she became acquainted with many town's people. The Prince gave Dolly jewellery valued at £20,000 as a wedding gift.

IN RETROSPECT ~ OF MORE TRANSPORT WOES

In 1964 the St John's Road Railway Bridge was closed to Motor Vehicles for 6 weeks for repairs, however the situation became much worse by 1969.



It was advertised that from 10 March 1969 the Bridge would be closed for 3 or 4 months, with a diversion in place. That did not go well as reported in the IW Times. Traffic Wardens and Police had to direct single file traffic, including double decker buses, after the sewer collapsed.

IW Times 20 March 1969

Road Caved In - A diversion route junction being used by heavy traffic while the St. John's Road Bridge at Ryde is under repair caved in early yesterday. The sewer pipe running beneath the corner of Monkton Street and Park Road collapsed, opening a six-foot deep hole in the highway. How long the repairs will take is uncertain; much could depend on the weather.

Photographs of the work – Left removing one of the girders and right demolishing the centre section – Roy Brinton Collection

IN RETROSPECT ~ OF MORE NECESSARY WORK

IW County Press 19 August 1939

The first lane well system on the Island was installed at Ryde to help with water supply. The system, which pumped 400,000 gallons in 24 hours, used two boreholes at the Knighton water works.

IW Times 15 November 1956

Ryde Borough – It was described this week by the Senior Public Health Officer, Mr Stanley Dunmore, the "fantastic waste of water in the Borough" is adding daily to one of Ryde's major problems, that of drainage.

IW County Press 13 September 1958

A £50,000 scheme to provide sewerage pipes to Kite Hill, Fishbourne and the Binstead area, was approved by Ryde Borough Council. A report showed the majority of properties in these areas were connected only to septic tanks.



More than 400 people took up an offer from Southern Water on Saturday and went underground to see for themselves sewage improvement work being carried out at Ryde. Southern Water's open day gave the public an opportunity to walk along an underground tunnel at St John's Wood Road, which will be connected to the marine treatment works at Appley when the current improvement work is completed in a few months time ... people of all ages from about three to 70 passed through ... Chris Twaites picture shows tunnel inspector Sean Hegarty explaining the construction of the tunnel to a party of youngsters.

IW County Press 9 March 1990

IN RETROSPECT ~ OF A LONG GONE MOTOR COACH SERVICE



Advert Ryde & Seaview Guide 1935
Taylor's Monkton Street premises photograph
Roy Brinton Collection
Article IW Times 15 August 1968



Removing a Victorian fireplace from his home at "Wiltshire House," 40 St. Thomas' Street, Ryde Mr. G. E. Rea found behind it an old business card advertising "luxury" coach trips around the Island.

For a modest sum, just before the turn of the century, you could be conveyed around the Island in the horse-drawn vehicle of your choice, either a Laundau, a Brougham, or a Victoria.

The firm, James Taylor, of Monkton Street, Ryde, established in 1845, also offered special terms arranged "for the conveyance of any number of persons attending a bean feast or wayze goose."

A special attraction was a three-day tour of the Island, following the coast road from Ryde to Blackgang, then on to Freshwater, and finally back to Ryde via Cowes and Wootton.

IN RETROSPECT ~ OF THE CHANGING TIMES AT 64 HIGH STREET



In a directory of 1910 G H V Bonner was at 64 High Street.

George Henry Vincent Bonner came to the Island as a young man. For a while he was in business at Cowes and then for 17 years acted as manager for the late Mr. C. J. de Launay, in the High-street. A quarter of a century ago he commenced in business on his own account as a grocer and provision merchant, first at 64 High-street and then at the present premises, 61 High-street. He took a great interest in the many social and religious societies in the town and was a consistent supporter of all philanthropic work. Of a very pleasant disposition, Mr. Bonner was held in high esteem and his passing will be mourned in many directions. Obituary **IW County Press 12th May 1934**

In the 1935 directory Claude Barton was at 64 High Street as a gentleman's tailor. The shop front had, by the time of this photograph, been redesigned to the style seen today.

By the 1951 directory E Bull Ltd was listed at no 64.
At the present time it is occupied by Phil the Barber.
Photos RSHG



IN RETROSPECT ~ OF THE CHANGING ATTITUDE TO ALCOHOL



The British Womens Temperance Association (BWTA) was founded in 1876, becoming the foremost womens temperance movement in Britain. It was later known as the White Ribbon Association. The Temperance Movement was at its height in the 19th Century, campaigning against the consumption of alcohol and actively trying to get the government to pass legislation to restrict the sale of alcohol. Advocates of temperance were concerned about the social impact of drunkenness to society, families and industry. The White Ribbon Association was instrumental in bringing women into the public sphere and contributed significantly to society over the years. (Wikipedia)

IW County Press 18 August 1923

True Temperance – The Fellowship of Freedom and Reform held a meeting on the front on Thursday, when the case against Local Option on Prohibition was explained by Messrs. F. J. Hand and F. A. Woolfe. The large assemblage carried a resolution against supporting any prospective legislator in favour of Local Option on Prohibition.



The Temperance Hotel in Union Street.
Roy Brinton Collection

IW Observer 30 March 1878

Temperance - We understand that a temperance coffee house is in progress of formation by public subscription, at Oakfield, where tea, coffee, cocoa, &c., will be procurable at the lowest possible charges, and with a reading room annexed, where newspapers and books of a moral and amusing tendency will be provided for the use of labourers, railway men, and yachtsmen who lodge at Oakfield, and where at present there is no place for rest or refreshments but the public-houses. It is hoped that this effort to enable the working classes in the neighbourhood to improve themselves may meet with the help that it deserves, and which such institutions have met with in all other localities where they have been established.

IN RETROSPECT ~ OF CAR PARKING & OF SUPERMARKETS



In November 1937, it was reported that progress was being made as to the proposed sale of Mount House and Sudbury Villa, George Street to the Council. The acquisition of these two properties were an essential part of the Council's proposed scheme for a large car-park close to the town of Ryde. The tradespeople of the town thought it would be a fine asset. The surveyor was to be authorised to commence the work of demolition as soon as possible. However, it wasn't until March 1960, and after much criticism of the Council for its lack of drive and for being long-winded, that it was agreed to place the work in connection with the Ryde Borough Council's central car park in the hands of private contractors, and the demolition of Mount House could begin. Postcard of Mount House circa 1911, Hilary Lloyd

IW Times 11 July 1963

Tradesmen – Some Ryde tradespeople, notably fruiterers and greengrocers, are avoiding causing traffic jams by unloading goods in the central car park at George-street. This unorthodox use of the car park was in a report of the Public Works Committee.

Photos of the construction of the new Somerfield Store, Anglesea Street.

The lower photo shows the Gateway Store, formerly the International.

Roy Brinton Collection



IW County Press 27 March 1998

Pupils from St Mary's Primary School, Ryde, officially opened the town's new £6.5 million Somerfield store. 87 permanent jobs, and 25 temporary ones were created, and it was hoped the supermarket would bring investment back into central Ryde.



IW County Press 19 November 1999

More than 250 staff were left stunned after news the Island's two flagship Somerfield stores had been put up for sale. The Newport store in South Street and the 18-month-old, £6.5 million state-of-the-art store in Anglesea Street, Ryde, were among 140 larger stores around the country being shed. Although bosses said it would be business as usual, staff worried about the uncertainties over their future.

IW County Press 4 February 2000

Supermarket giant Somerfield confirmed 120 jobs at its Ryde store were safe. Somerfield said the £6.5 million store, less than two years old, was not one of 11 stores set to be sold to Waitrose.

IN RETROSPECT ~ OF COMMUNICATIONS



IW County Press 1 February 1936

A major development in the Island's telephone system was unveiled in Ryde. The telephone system that served the Ryde area was switched to an automatic system and was seen as the forerunner of the Island network. The switching involved 769 lines and was, incredibly, completed by four men in just three minutes. In that time, the old exchange, which had been operated by hand, was stopped and residents were now able to make calls with greater ease.

IW County Press 1 December 1973

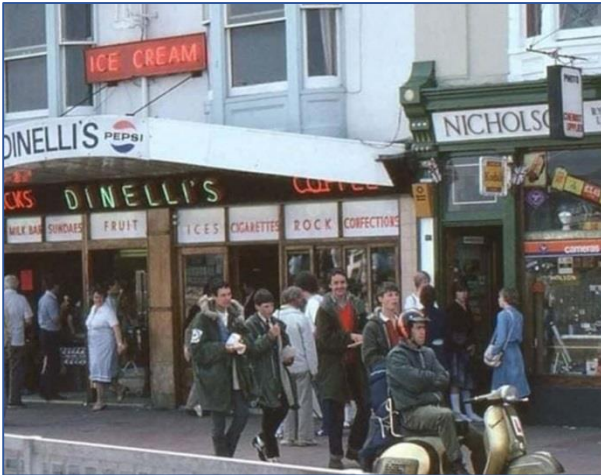
We read that Ryde telephone exchange extension will cost just over £1 million. Can we hope that a few pounds will be spent on landscaping this monster building and stark car park in a residential area? So far there are a few metal lamp posts, which might suit Colditz rather than Ryde.

Telephone Call Office,
8 Union Street.
Roy Brinton Collection



Telephone Exchange, with the grey extension to the original red-brick building
Photo credit © [David Hillas \(cc-by-sa/2.0\)](#)

IN RETROSPECT ~ OF SCOOTERS AND FESTIVAL GOERS



IW Times 5 November 1964

Mods' Rampage – Ryde Esplanade took on the appearance of a battlefield on Saturday as windows were smashed and flower beds trampled. The town was taking yet another knock from young hooligans, this time “mods” riding scooters who stormed into town. 1964 photos, some wearing the obligatory parka.

Photos Roy Brinton collection



From the IW County Press 4 April 1970.

Over 200 competitors registered for the annual Easter Rally of the Lambretta Club which was staged at Sandown. The majority arrived on Good Friday, using special ferry bookings, but those who came by car, with their machines on trailers, experienced difficulties getting tickets. The major event was the road trial on Saturday, over a 70-mile route. Due to the wonderful stretch of sand at Sandown there was sand racing on Sunday, followed by driving tests, concluding with a hill climb at Bembridge Down on Monday. The organiser said they all looked forward to returning to the Island.



1970 Festival at Afton - Wikipedia

IW Times 5 September 1968

Pop Festival – After all the ballyhoo and hands raised in horror, the pop festival at what was predicted would prove an aptly named Hell Field, near Godshill, went off without much trouble on Saturday night. One or two longhairs who were expected to join the herd, never turned up, but there were enough to entertain the crowd. One unfortunate drunk found the earth swallowing him as he stepped into a ditch which had been dug as a makeshift lavatory. This week a few of the fans were to be seen hanging about Ryde in the typical pose—sprawled on the pavement about the Western Gardens.

IW Times 4 September 1969

Good or Bad for the I.W. – Ryde Council 'Talk-In' on Festival 'Love-In', would the Island be wise to welcome another Pop Festival? Some in official circles think the “love-in” scenes at Woodside Bay and the naked prancing of young females were reminiscent of “the back streets of Port Said”, but others seem to believe that the overall publicity value outweighs the other considerations. Property in the Wootton and Binstead areas were violated. Front gardens were used as sleeping billets, and on very many occasions as lavatories. The scene of the site was appalling with litter and filth everywhere.

IW County Press 5 September 1970

Pop Festival – The organisers of the pop festival at East Afton, Freshwater, stated at the weekend that it would be the last such event they would hold on the Island. Estimates of the attendance varied from 150,000 to 400,000. The presence of so large a gathering disorganised life in the Island, where many people are angry at the intrusion of such a horde of unwelcome guests, against their expressed wishes.

IW Times 20 February 1969

Visitors - “Instead of complaining about having to get off the pavement because of the crowds in the town during the summer, residents should be delighted at the inconvenience.” This was the comment of Ryde's Deputy Mayor at the annual banquet of the Ryde and Seaview Hotel, Guest House and Caterers' Association, at the Royal York Hotel on Friday. “These visitors are our very life blood,” he went on. “Let us not forget that Ryde is a seaside resort, and without the influx of visitors each year we should be reduced to a very low ebb.”

AND SO SAY ALL OF US

Reported quote from Bob Dylan on Tuesday when he landed at Kennedy Airport and was asked about the I.W. Pop Festival: “They make too much fuss about pop stars over in England.”

Comment made by Bob Dylan after the 1969 IW Pop Festival

‘IN RETROSPECT’
A LOOK BACK AT RYDE
OVER THE YEARS