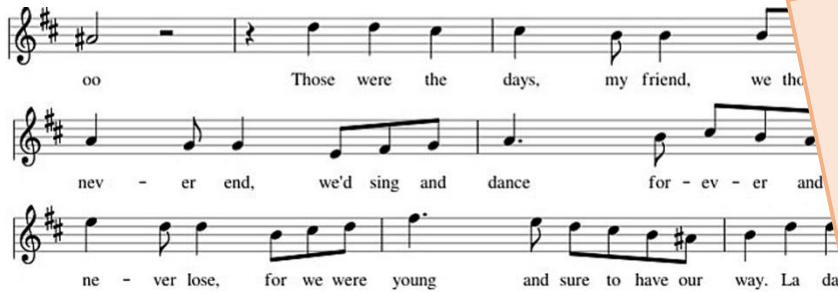




RYDE SOCIAL HERITAGE GROUP

Beyond the Graves

Volume 19: Number 2: April 2024



Those
Were the
Days

According to the song by Mary Hopkin (released in 1969)

Those were the days, my friend
We thought they'd never end
We'd sing and dance forever and a day
We'd live the life we chose
We'd fight and never lose
For we were young and sure to have our way

IW Times 7 April 1960

Advert - Royal York Hotel. Saturday April 9th. Modern Dancing. Special Teenagers Night. 8pm to 12 Midnight. Admission 3/6. Dancing to Paul Raynor and his Band.

chequers Ryde 3832

Members please note club rules are displayed at all strategic points throughout the club and members are expected to abide by them at all times.

N.B. The management reserves the right to withdraw membership at their discretion.

Victoria Arcade
Union Street,
Ryde, I.O.W.

"THE SEAGULL" Jive RYDE PIER

There is Jiving at the Seagull on SATURDAY APRIL 16th and MONDAY APRIL 18th.
From 7.30 p.m. to 10 p.m. ADMISSION 2/6
And each Saturday thereafter until Saturday May 21st

CULVER CLUB

SATURDAY, APRIL 22nd
MEMBERS' DANCE
LONDON CABARET
Howe Evans and Pat Kane
To help the funds of Bembridge Amateur Dramatic Society
TWO BANDS —
THE CULVER CLUB BAND
and
THE DEL MONDO TRIO
Only members and members' guests admitted, who must be 18 years of age or over
SNACKS SNACKS SNACKS
Delicious Scampi and Chips or Chicken and Chips served in a basket
YOU ALWAYS HAVE A GOOD EVENING AT
CULVER CLUB

La Babalu Club Ryde 3309
RYDE AIRPORT

Fully Licensed
till 2 a.m. Mon-Sat.
Midnight Sundays

TONIGHT, SEPT. 29th — "SNIFF," also Miss X doing her thing.
Sunday, SEPT. 30th — BABALU FOLK NIGHT
Monday, OCT. 1st — GUEST D.J. (?)
Tuesday, OCT. 2nd — ROCK 'N' ROLL
Wednesday, OCT. 3rd — MALC'S MAD DISCO
Thursday, OCT. 4th — "SILVER" a new Rock on group (appearing at The Babalu prior to their South American tour).
Friday, OCT. 5th — Ryde's own "MONKTON MEAD"

ATMOSPHERE ★ ★ ★ EXCITEMENT
NEW BARS ★ ★ ★ NEW DECOR
New Air Conditioning

WINTER MEMBERSHIP 50p (Sept-May)
Reduced Entry fees B.F. 11 p.m.

MAN IT'S COOL at the BABALU
BE CASUAL BE SMART
Tel. Ryde 3309 for details of membership.

IW Times 12 September 1963
Ballroom - It is not often that a lady hotelier embarks upon personally designing the décor for a large, brand-new ballroom and carries out the work with direct labour under her own supervision. Miss Jose Wellspring of the Osborne Hotel managed to do so with success as evidenced when her new "Oasis Ballroom" was officially opened.

Seagull Advert IW County Press 16 April 1960
Chequers membership Card 1967
Culver Club Advert IW County Press 15 April 1972
La Babalu Advert IW County Press 29 September 1973

On Ryde's Beautiful Esplanade

- ★ FACING SEA AND PROMENADE
- ★ FRIENDLY AND COURTEOUS SERVICE
- ★ COMFORT THROUGHOUT
- ★ FIRST CLASS FOOD
- ★ SEA VIEWS FROM MOST ROOMS
- ★ ATTRACTIVE BEDROOMS

- ★ DANCING NIGHTLY TO RESIDENT ORCHESTRA IN THE OASIS BALLROOM
- ★ LICENSED
- ★ TELEVISION
- ★ LAWNS AND GARDENS
- ★ BATHING FROM THE HOTEL

Parties up to 300 catered for Breakfasts, Luncheons or Dinners
Wedding Catering is our Speciality

For tariff apply to the Resident Proprietress: Miss J. WELLSRING

RYDE QUEEN BOATEL (Floating Hotel) at
OPEN TO NON-RESIDENTS - FULLY LICENSED
We are not a club; there is no membership

RESTAURANT
— Paddle Steamer Steak Bar —
A choice of steaks from our new winter menu.
The Restaurant is open for dinner on FRIDAY and SATURDAY evenings only, from 7 p.m. until midnight.
Our Snack Bar is open every night.
A special 3-course Sunday Luncheon with coffee served in really pleasant surroundings for only £1.25.
Please book your weekend table early to avoid disappointment.
We cater for private dinner and buffet parties.

★ **COME EARLY**

WIGHT MARINA DISCOTHEQUE (Boiler Bar)
Listen to the great sounds of the Dave Allington Disco
OPEN EVERY NIGHT — INCLUDING SUNDAYS
Mon. to Sat. 8 until 1 a.m. Sundays until 11.30 p.m.

FUNNEL BAR ERIC STEVENS TRIO
Friday and Saturday, 11 p.m.-1 a.m.
Now featuring every Sunday from 12 until 2 p.m.
THE LIVE SOUND OF Pseudo Foot
Miss Wight Marina Beauty Contest
5th HEAT on Wednesday, February 21st.
★ Free admission EVERY NIGHT before 9 p.m.
★ Free admission EVERY SUN. MON. and TUES.

Ryde Queen Advert
IW County Press
17 February 1973

After dancing the Night Away
Enjoy a Cuppa with Friends



Delicious Café near Esplanade Station entrance

For Value
try the
Strand Café

BREAKFASTS
LUNCHES
TEAS SUPPERS
Early morning tea or coffee

106 Monkton St., Ryde
Just off the Esplanade
Tel. 2045

PARTIES CATERED FOR
Seating capacity 80

The Snackery

ESPLANADE, RYDE
TEL. 2161


QUICK MEALS IN LUXURIOUS
SURROUNDINGS
AT LOW PRICES

THE
ONLY SELF-SERVICE RESTAURANT
IN RYDE

El Cordobes Coffee Bar
High Street, Ryde

meet here
eat here

An invitation to the latest,
greatest Coffee Bar and
Eating House on the
Island.



DOLLY'S

Coffee House and Tea Rooms
Home cooking a speciality

28 Cross Street, Ryde
Isle of Wight, PO33 2AA
Tel (0983) 613178

the pied piper
Tea Room and Coffee Shop,
Gifts and Crafts

8 Cross Street, Ryde, Isle of Wight PO33 2AD
Come and enjoy home-made cakes and scones in
cosy surroundings
(0983) 612838

RYDE BOATING LAKE
MOST INTERESTING AND VERY SAFE

The CHILDREN especially will get
a Big Thrill in the

SELF-DRIVE
MOTOR BOATS
PADDLE BOATS
SPLASH CATS
CYCLO CRAFT
CANOES & ROWING
BOATS
(Very pleasing for
adults also)

Open All Day
from 9 a.m.




HARBOUR CAFE



Strand Café advert:
Lightbown's Visitor's Guide 1955
El Cordobes: Islander August 1968
Fowlers Pantry: Ryde Guide 1987
Dolly's & Pied Piper adverts:
Welcome to Ryde Guide 1992

The Pantry
welcomes you to Ryde
for a really good cup of
coffee, home-made scones,
cakes and pastries
Light lunches served
12 noon to 2.15 pm
Open 9.30 am to 4.30 pm
6 days



Fowlers
of RYDE



Thatchers End – Ann Barrett Postcard
Harbour café near the Canoe Lake - RSHG
Advert Show of Shows Programme 1972

When the Sun Always Shone



Donkey Rides Photo
Ann Barrett

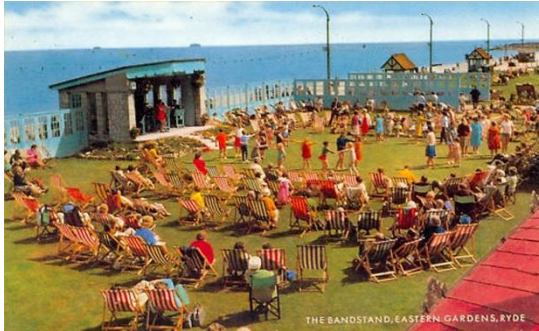
Pavilion, Bandstand &
Canoe Lake Postcards
RSHG

Pavilion Advert Islander
August 1968



IW Times 4 January 1962

Donkey Ride Helpers - Mr and Mrs John Eade of Station House, Station Road, St Helens gave a party for more than 50 children and 30 adults, who helped with the donkey rides on Ryde beach during the holiday season. The children's favorite donkey, 20-year-old Freda was prevented from coming because of the weather.



IW Times 21 April 1932

BOROUGH OF RYDE ENTERTAINMENTS

Entertainments Manager: R. A. Gammons

Esplanade Pavilion

Nightly at 8 p.m. throughout the Season
KEN BARNES presents

Summer Music Hall

The Island's Finest Entertainment

Box Office open 10 a.m. to 9 p.m. Table seats 7/-
Stalls 5/6

EASTERN ESPLANADE BANDSTAND
DAILY AT 11 a.m. and 3 p.m. (Not Saturdays)

Frieda Hall

With Her Show Band Bandstand Enc. seats 1/-

PUTTING & MINIATURE GOLF
Esplanade Sandringham Green Puckpool Park Appley Park

TENNIS
Puckpool Park

BOATING
Canoe Lake

BOWLS
Esplanade and Puckpool Park

IW Times 12 March 1964

Ryde's "chairborne division" – the people who buy season tickets to use seafront deck chairs throughout the season - will pay almost three times as much this year.



BOROUGH OF RYDE



Revised Scale of Charges for Deck Chairs

Three Hours	2d.
Weekly Ticket	2/-
Fortnightly Ticket	3/6
Monthly Ticket	5/-
Season Ticket	7/6

Available for the use of chairs in the Eastern and Western Gardens, Canoe Lake Gardens, on the Promenade, Beach, Pier, and Band Concerts on the Greens.

*These tickets may be procured now from any uniformed Chair Attendant or from the Superintendent's Office, Pier Gates.



BOWLING GREEN AND SUMMER THEATRE, RYDE, I.O.W.

Blue Funnel Cruises Advert – Show of Shows Programme 1972
Photos of 'Verda' Blue Funnel Cruise Boat, skippered by Maurice Early, with steward/deckhand Ron West.
Photos – Ron West



CRUISES FROM..

RYDE PIER

saloon passenger craft
with refreshments aboard

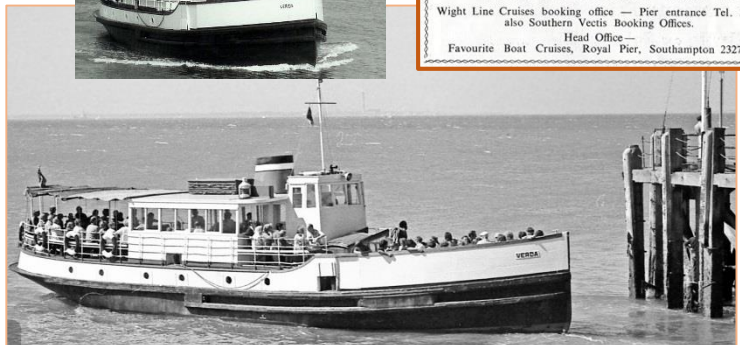
by Blue Funnel Steamers

Day Cruises to BEAULIEU, SOUTHAMPTON, YARMOUTH etc.
Morning and Afternoon Cruises to the HAMBLE RIVER, PORTSMOUTH HARBOUR, BUCKLERS' HARD etc.

Wight Line Cruises booking office – Pier entrance Tel. 3478
also Southern Vectis Booking Offices.
Head Office –
Favourite Boat Cruises, Royal Pier, Southampton 23278.

IW Times 12 March 1964

Despite a plea from Ryde Bowling Club, whose Esplanade greens attract thousands of spectators every summer, the corporation agreed to increase the price of season tickets from 7s 6d to £1. The new price, however, will permit the use of deck chairs anywhere along the front (in the past season tickets covered the Eastern Esplanade only).



WOOLWORTHS



Photos of Woolworths Staff donated by Ann Lamb:
 Exterior Photo 1955, seated front 3rd from left is Mavis Bartley (nee Garraway)
 Interior Photo 1965/62, seated at the table left is Mavis Bartley (nee Garraway)
 Can anyone identify any more people?



The High Street premises taken three days before closure by Dave Bushell, 28 December 2008.

IW County Press 13 June 1964

Female Staff Required as Counter Assistants, modernised conditions, Junior Staff - 16 years and over, required for Saturdays. - Apply F. W. Woolworth & Co., Ltd., Ryde.

IW County Press 5 January 1974

Goods Stolen – The Ryde High Street store of Woolworth's was broken into this week and goods valued at £1,101 stolen. A window was forced at the side of the building. Property taken included 26 wrist watches, 230 tape pre-recorded cassettes and cartridges, 30 gas lighters, and over 20 transistor radio sets.

TV & RADIO

IW Times 10 August 1961

Radios - Despite some complaints, the Council do not consider any special action is necessary to prevent annoyance from portable radios in the town.

Isle of Wight Times 15 March 1962

Portable Radios - Cllr. Frank Searle said transistor radios were already a serious nuisance. The sooner the Council approved a recommendation that a by-law be submitted for approval to the Secretary of State restricting the use of portable radios, the better.

IW County Press 9 January 1965

Clarks for the latest TV rental. 19-inch H.M.V. Designed for those who seek something better than a basic set. Superb up-to-the-minute model designed for dual standard operation, reaching the highest standards of H.M.V. reliability and performance. 9/- weekly.



Photo Radio Rentals – Roy Brinton Collection
 Youngs Advert IW County Press 31 July 1965

MORE ENTERTAINMENTS

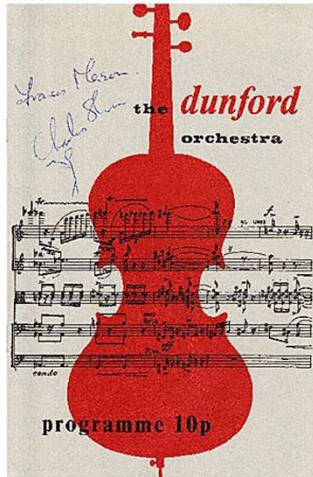
THE DUNFORD ORCHESTRA

“It is with much thought that we look back to the birth of the Dunford String Orchestra in 1947. How drab was the musical scene of that day The long haul from austerity and utility had only just begun. The Symphony Orchestras were rebuilding their strength”.

The significance of this development in the cultural life of the Island was highlighted twenty-five years later as the orchestra celebrated its 25th anniversary with a concert in its home venue of Ryde Town Hall.



Photos of the Dunford's Concerts at Ryde Town Hall in the 1950's (courtesy of Leslie Hutchinson)
Souvenir Programme 1972



WRESTLING
ESPLANADE PAVILION, RYDE

Doors open 7 p.m. FRIDAY APRIL 21st, at 7.30 p.m.

The clash of the year. The bout everybody said would never come off. One man to unmask in the ring . . .

THE OUTLAW
Won his last match here on 8th against Bob Bell, now faces the undefeated masked American

v.

DOCTOR DEATH
Hollywood's No. 1 masked star, undefeated to date. Will unmask if beaten.

Middleweight classic —

PEDRO THE GYPSY v. **AL PALIN**
Funnier than Kellett v. Widnes, Lancs.

Match of heavyweight —

WILDMAN OF BORNEO
Half man, half animal, must be seen to be believed

v.

JOHNNIE LOCKE
Popular young star all out for victory over his controversial opponent.

PLUS PLUS PLUS TAG MATCH v. **GIRLS GIRLS GIRLS**
MISS MITZI MUELLER and **JULIE STARR**
42-24-36 blonde bombshell v. The rage of America

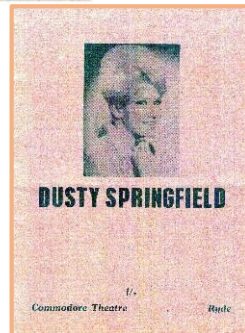
v.

Naughty NANCY BARTON & Miss PATTI McCOGHAN
Dark-haired sultry rule-bender v. Pride of Ireland

DONT MISS THIS ALL ACTION WRESTLING BONANZA
Seats: Ringside special, 100p; rear ringside, 75p, 50p, 40p.
Booking now: Esplanade Pavilion, Ryde (Tel. 2381) or at the door on evening of promotion.

Pavilion advert:
IW County Press
15 April 1975

Town Hall advert:
IW County Press
26 July 1975



16 August 1964

Dusty was top of the bill that night. She came on at 11pm and was only on stage for 25 minutes. She had had 3 hits and her 4th hit was released about the time of this performance. The 4th hit was Losing You.

My friend and I waited outside the Commodore Theatre in Star Street for approx 30 minutes. She eventually came out of the foyer and I spoke to her and obtained her autograph. I was a great fan of her and this was the highlight of my youth.

Memories and programme courtesy of Dave Bushell

COMMODORE ON THE STAGE
Manager: NORMAN WYGATE Telephone: 2616 RYDE

TWO SHOWS ONLY - SUNDAY, 16th AUGUST * 6-15 & 8-45

MERYN CONN for NORWICH ENTERPRISES presents

**★ DUSTY ★
SPRINGFIELD**

FOUR MACS

CHEROKEES v. **BRIAN FREEMAN** v. **SANDRA BARRY**
YOUR COMPERE

PETER JAY AND THE JAYWALKERS

IW Times 3 November 1960

Cinema - At the Theatre Royal, Norman Wisdom on Ryde Pier, filmed partly in Ryde, "There was a Crooked Man" continues a week's run with Norman Wisdom and Alfred Marks indulging in sundry larceny.

IW County Press 29 January 1972

Ryde Town Council have approved the acceptance of a booking for professional wrestling at the Esplanade Pavilion. The bill is to be topped by lady wrestlers.

IW County Press 16 July 1960

Acker Bilk and his paramount Jazz band were due to perform his sell-out show, Music from New Orleans, at Ryde Commodore.

IW County Press 7 September 1952

Ryde Buccaneers held their Crazy Night event as part of Ryde Carnival, with more than 300 people joining in the fun. As an unwritten rule, their annual dance was the only time in the year when the Buccaneers would appear in public in normal clothes instead of their usual pirate costumes. But in return, their guests had to come to the dance in the wackiest costumes they could think of.



IW 23 December 1964

Ryde Buccaneers the undisputed leaders of charity in the town, are to go from shop to shop in Ryde with a "Goods for charity" cry instead of the traditional "Money or your life." This is one "protection racket" that the police are bound to turn a blind eye to.

Ryde Buccaneers photo RSHG

Southern Vectis Advert Show of Shows Programme 1972

ISLE OF WIGHT

BUS/TRAIN ROVER TICKETS

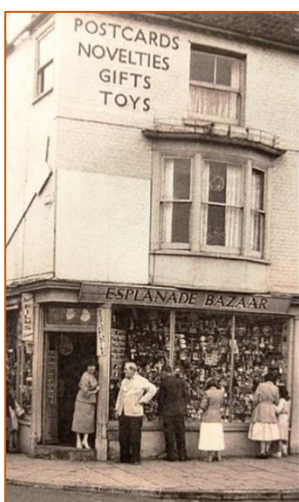
Unlimited travel for one or seven days throughout the Island by bus and train

CHARGES :	Day Ticket	:	:	80p
	7 Day Ticket	:	:	£2.40p

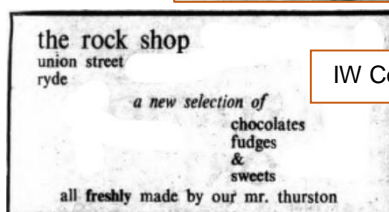
Luxury Coach Tours

Office - Adjoining Ryde Esplanade Station. Tel. 2264

SOUTHERN VECTIS OMNIBUS CO., LTD.



Novelty shop on the corner of George Street and the Esplanade
Roy Brinton Collection



IW County Press 1963

The Rock Shop was a favourite with children who could buy a bag of broken bits with their pennies.

IW County Press 28 May 1966

Young Girl Assistant required for Rock Shop, Union Street, Ryde. Ring 2356



The Tollgate, Seaview, with Frank Peart, collector, 12 August 1990. Photo Dave Bushell

IW County Press 2 February 1974

Ryde St. John Ambulance Unit helpers have opened a charity shop in the Rock Shop, Union Street, to aid headquarters funds. On sale are items of clothing and general household "odds and ends," all of which have been donated by the public.

An excerpt from Ward Lock 1967

Union Street is the finest street in the town of Ryde. Some of the shops and neighbouring thoroughfares would do credit to larger towns, ascending, is the Post Office, and the banks are close at hand. Many of the more loftily situated houses, both here and in other parts of the town, have roof platforms commanding a fine view at times of special naval displays.

We have lost 3 of the Banks and the main Post Office and Naval displays are a rare occurrence now.

Islander Magazine February 1976

from an article, 'Nostalgia' by Oswald Sinclair
Father used to say "Never look back," always adding, "once it has happened you can never alter it, so forget it and look only to the future." Wise advice but one can derive immense pleasure by looking back. Echoes from the mists of time can refresh, amuse and invigorate.

IW County Press 19 October 1935

Ryde enjoyed a record season for visitors, making it one of the most memorable years on record. Jubilee celebrations, followed by the pageantry of a naval review, helped to increase the number of visitors to the town. Yachting events also proved popular and steamboats excursions were regularly full. The carnivals on the pier and community singing contests in the Western Enclosure were popular and the town's other attractions were used by thousands of people.

"Very wonderful"

IW Times 25 April 1946

Those were the days indeed
No wonder we needed 'Phyllosan'.

